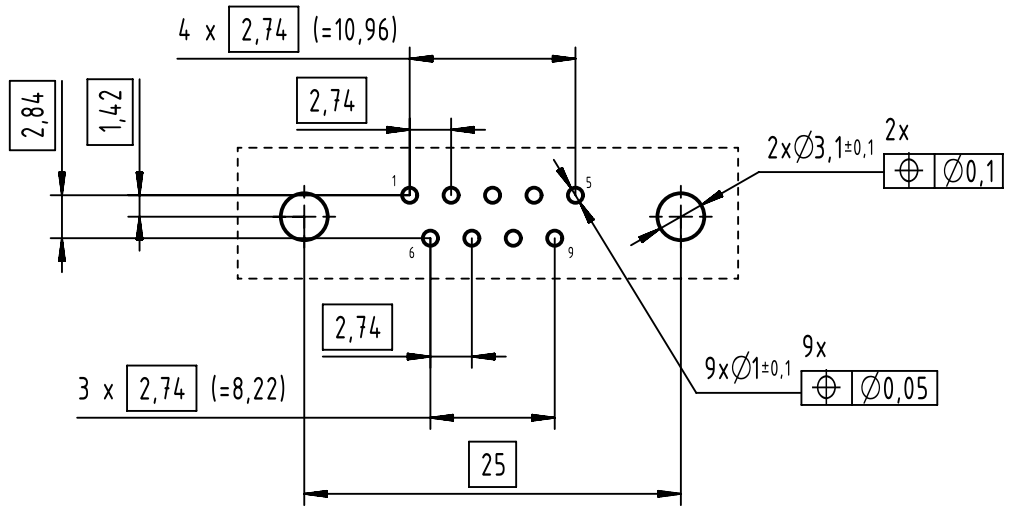
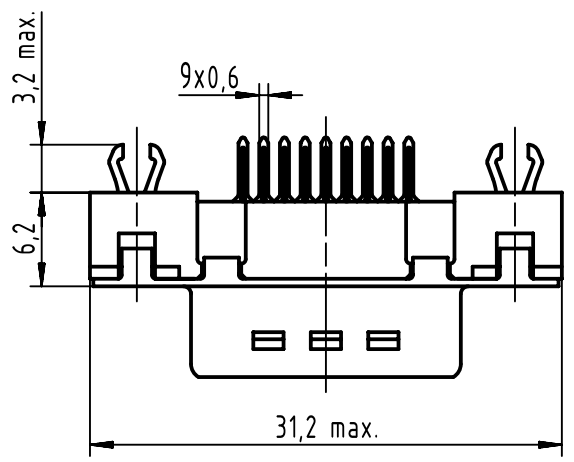
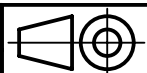


PCB layout component side
recommended thickness 1,6 mm



Connector retention and insertion forces on PC-Board: 25 N / 80 N

09651613711	M3	PL1
09651616711	M3	PL2
09651617711	M3	PL3
09651613712	4-40UNC	PL1
09651616712	4-40UNC	PL2
09651617712	4-40UNC	PL3
Part number	Nut thread	Performance level



All Dimensions in mm
Original Size DIN A4

Scale 2:1	Free size tol.	Ref.
Created by ZHUANGJ	Inspected by LUOK	Date 2023-06-08
Standardisation ROEBEN	State Final Release	Sub.



All rights reserved
Department EL PD

Title D-Sub male straight connector 9-pole with board lock		Doc-Key / ECM-Nr. 100593445/UGD/000/B 500000246867
Type TB	Number 0965161X71X	Rev. B

HARTING
D-32339 Espelkamp