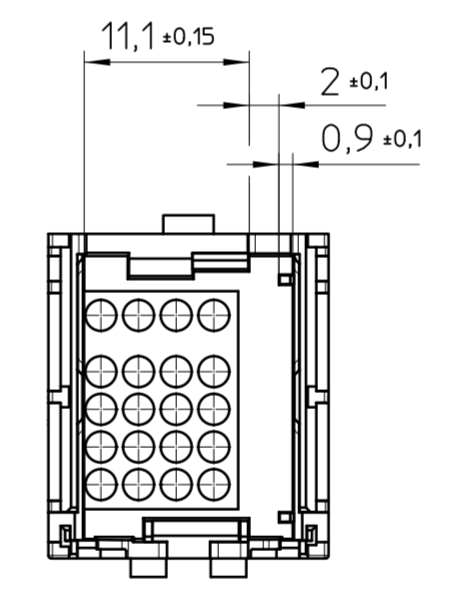
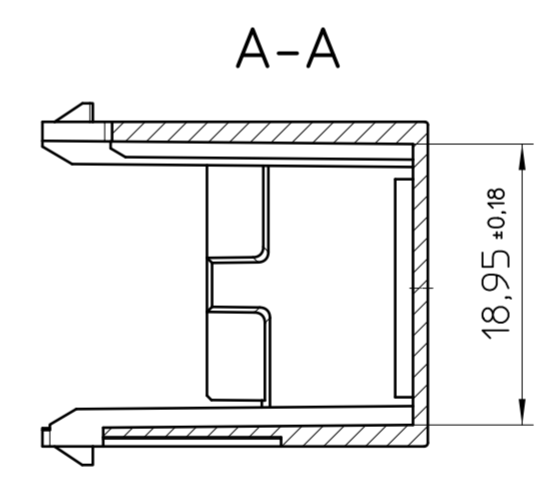
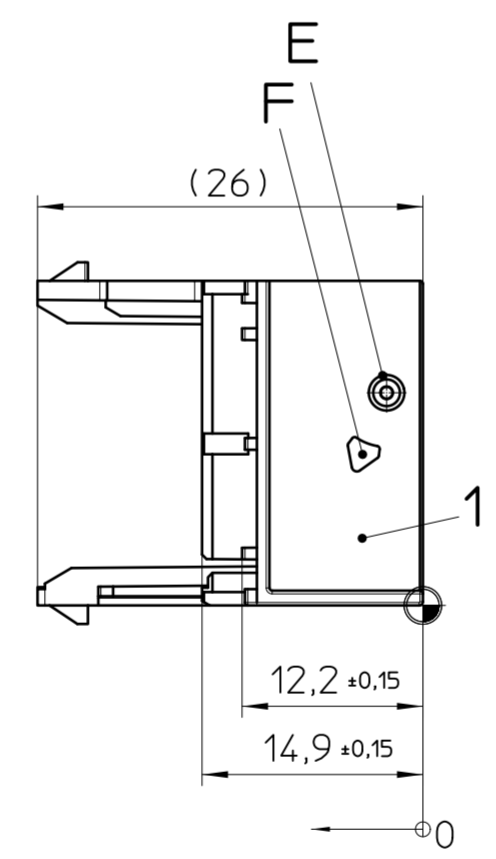
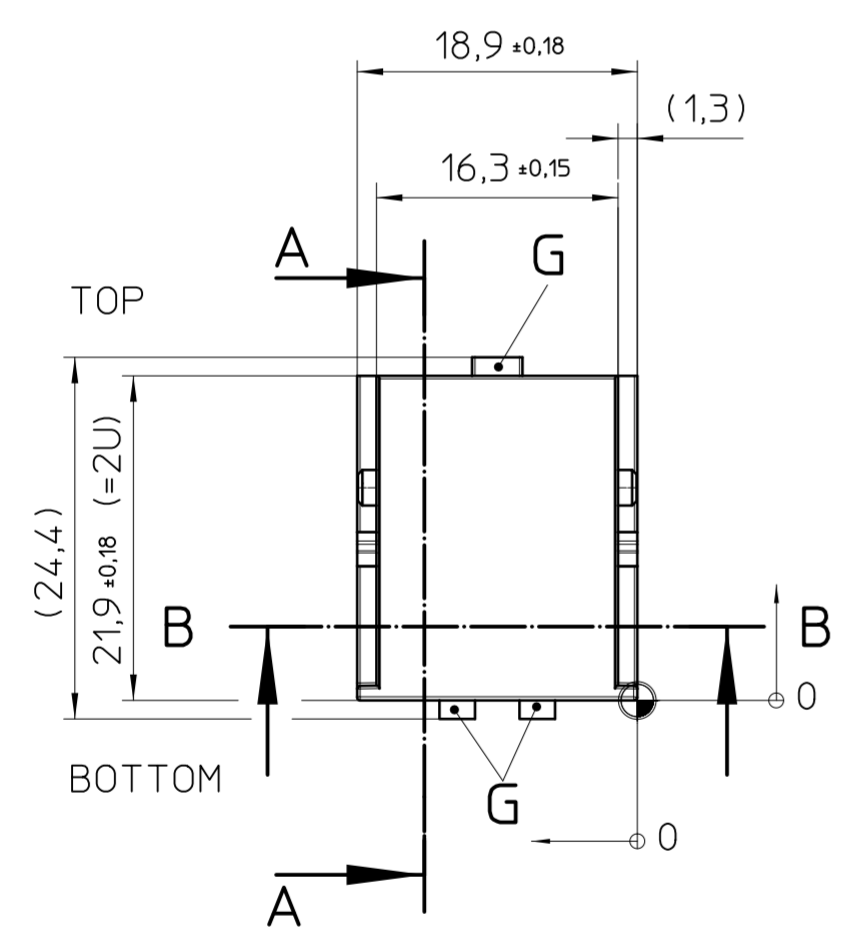
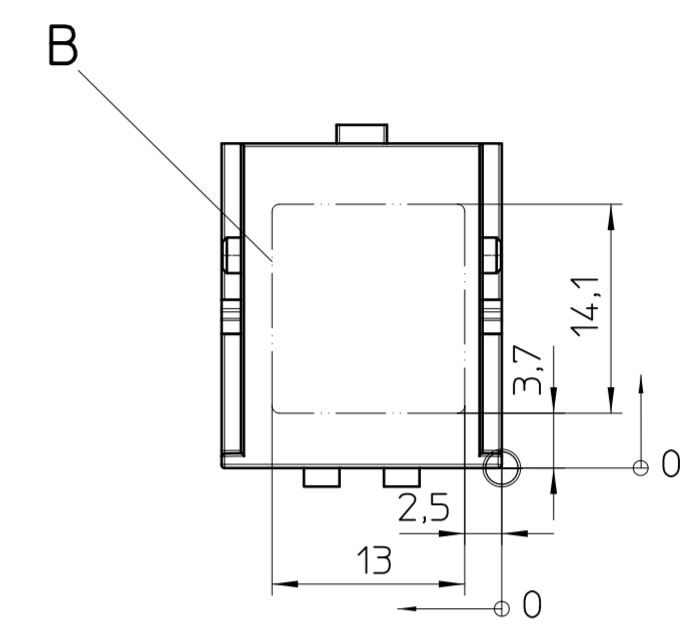
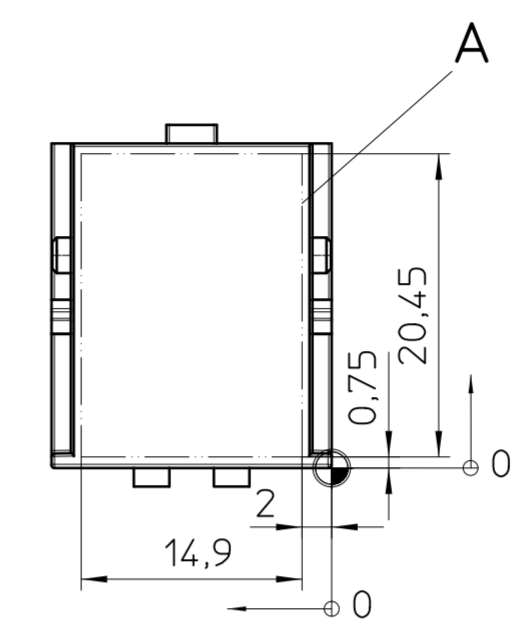


Marking area

Machining area



Transfer or duplication of this document as well as the utilisation or communication of its content are not permitted unless express consent is granted. Violations give rise to claims for damages. All rights reserved in case of patent, utility model or design patent registrations.

Weitergabe sowie Vervielfältigung dieses Dokuments, Verwertung und Mitteilung seines Inhalts sind verboten, soweit nicht ausdrücklich gestattet. Zuwiderhandlungen verpflichten zu Schadensersatz. Alle Rechte für den Fall der Patent-, Gebrauchsmuster- oder Designeintragung vorbehalten.

- General Information:
- Simplified representation, exemplary shown in gray.
 - Document excluded from change process
 - Units are in millimeters [mm] and degrees [°]
 - Tolerances apply in a normal climate according to DIN EN ISO 291-23/50-2, PA plastic parts with about 2% (% by weight) moisture content.
 - Workpiece zero point for mechanical processing
 - Tolerances for marking and machining DIN ISO 2768-m
 - For milling > 50% of the machining area, the machinability should be verified.
 - In case of distortion there is no functional impact of the single part in the application.
 - Web: www.phoenixcontact.com webcode: #1635

- Additional Information:
- A. Max. marking area
 - B. Max. marking area (minimum radii 0,5)
 - C. Bottom side
 - D. PCB position (t=1,5)
 - E. Bearing position for Maring-Cover
 - F. Latching point between Cover and Marking-Cover
 - G. Latching point between Cover and Housing

ME-IO 18,8 C 2U MC			
Pos.	QTY	Description	Material
1	1	COVER	PA

	document-No. / RI	date	scale
	00881399 / 05	29.04.2025	2:1
	ident.-No.	document-type	
	2202616	TECDCOC 2D_Productdrawing	
page 1	of 1	description ME-IO 18,8 C 2U MC 7035	