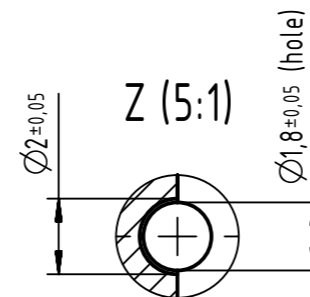
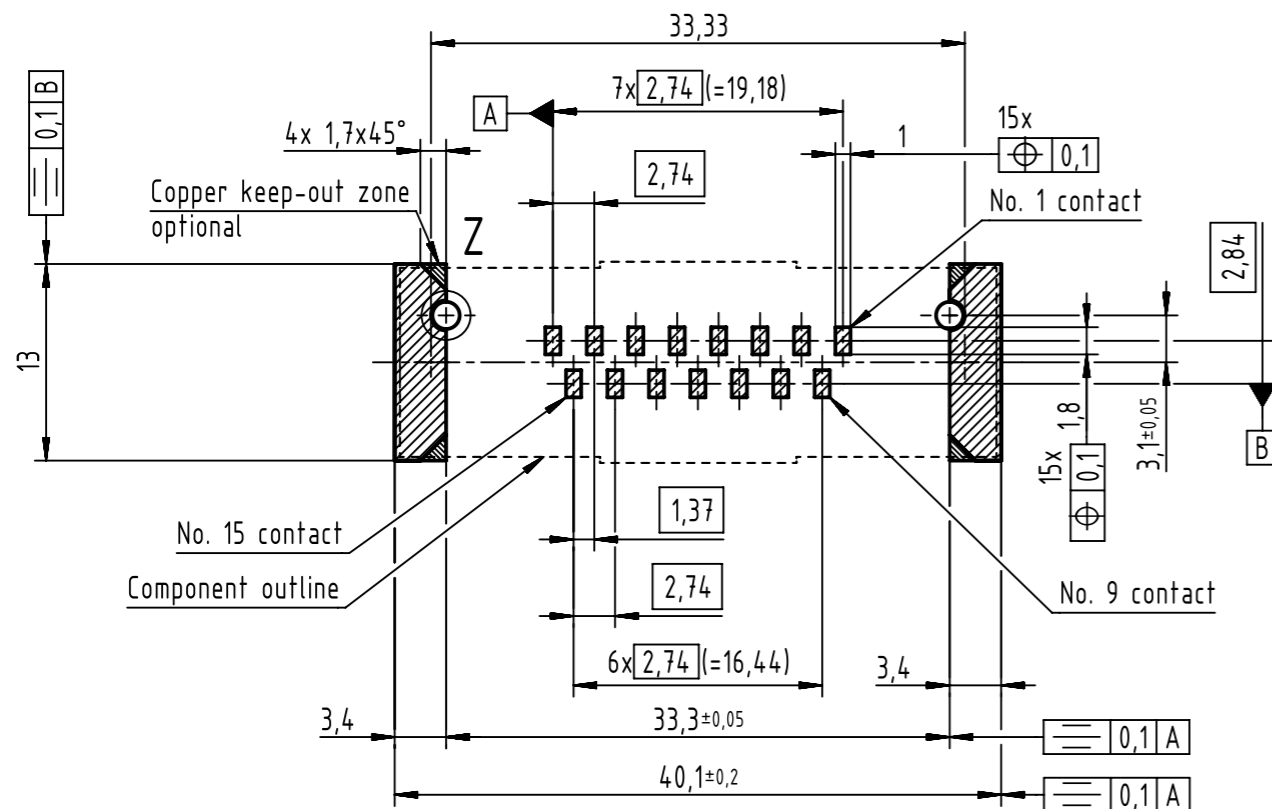


PCB layout, component side



Max. Temperature: 260°C during 10 seconds.
Find further technical information on DS 09550200302.

0955 215 6612 333	2	4-40 UNC	Black insulator	Samples
0955 215 3612 741	1			Reel packaging (140 connectors)
0955 215 6612 741	2			
0955 215 7612 741	3			
0955 215 3611 741	1	M3		
0955 215 6611 741	2			
0955 215 7611 741	3			
Part number	PL	Nut	Index designation	

 HARTING Electronics GmbH D-32339 Espelkamp	All rights reserved Department EL PD	Scale 2:1	Free size tol.	Ref.	Sub.
	Created by ZHUANGJ	Inspected by LUOK	Standardisation HOFFMANN	Date 2018-11-29	State Final Release
Title D-Sub str SMT 15-pole fem ass with screw nut & pad				Doc-Key / ECM-Nr. 100236643/UGD/001/C 500000139800	
Type TB	Number 0955215X61X	Rev. C		Page 1/1	