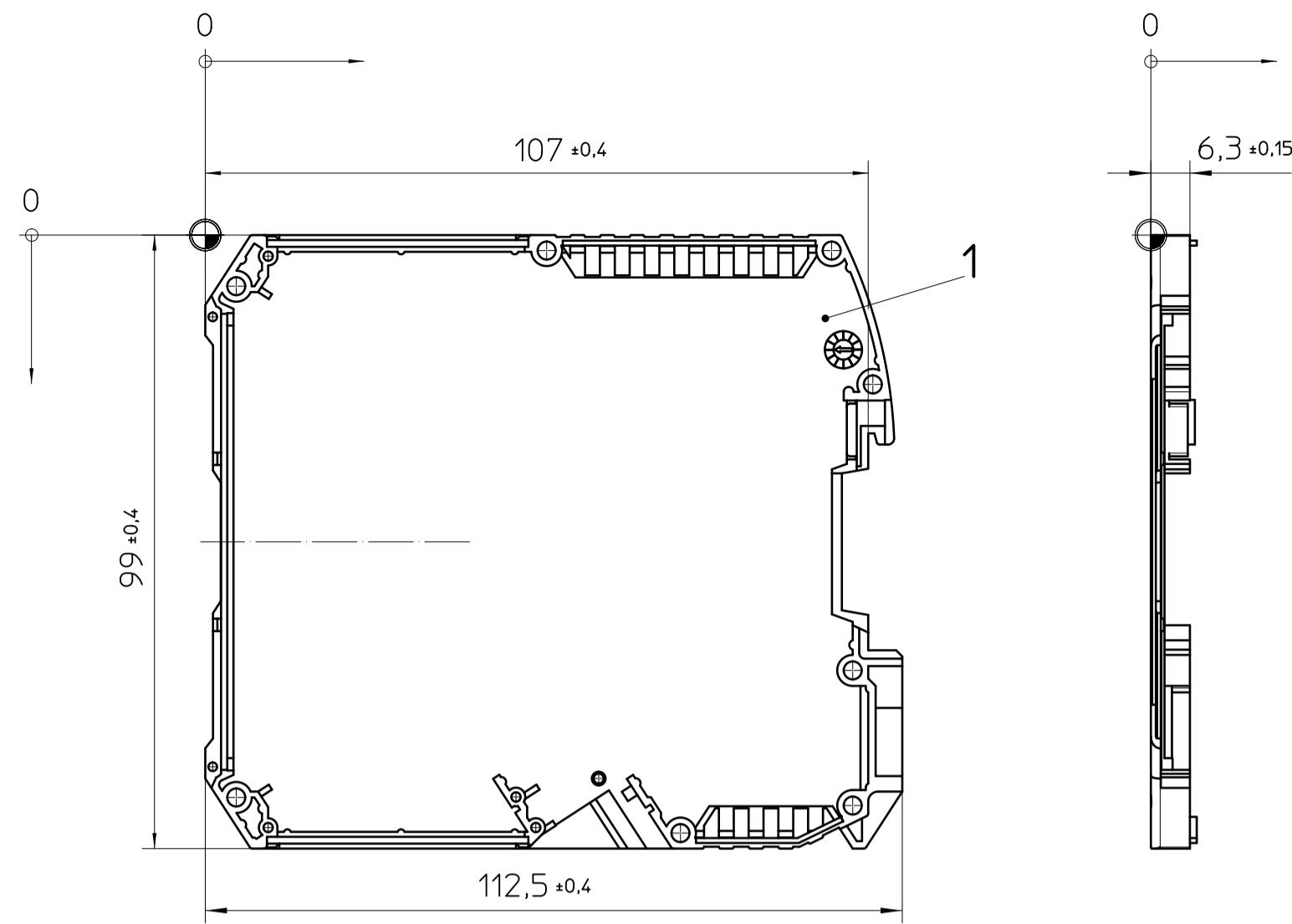
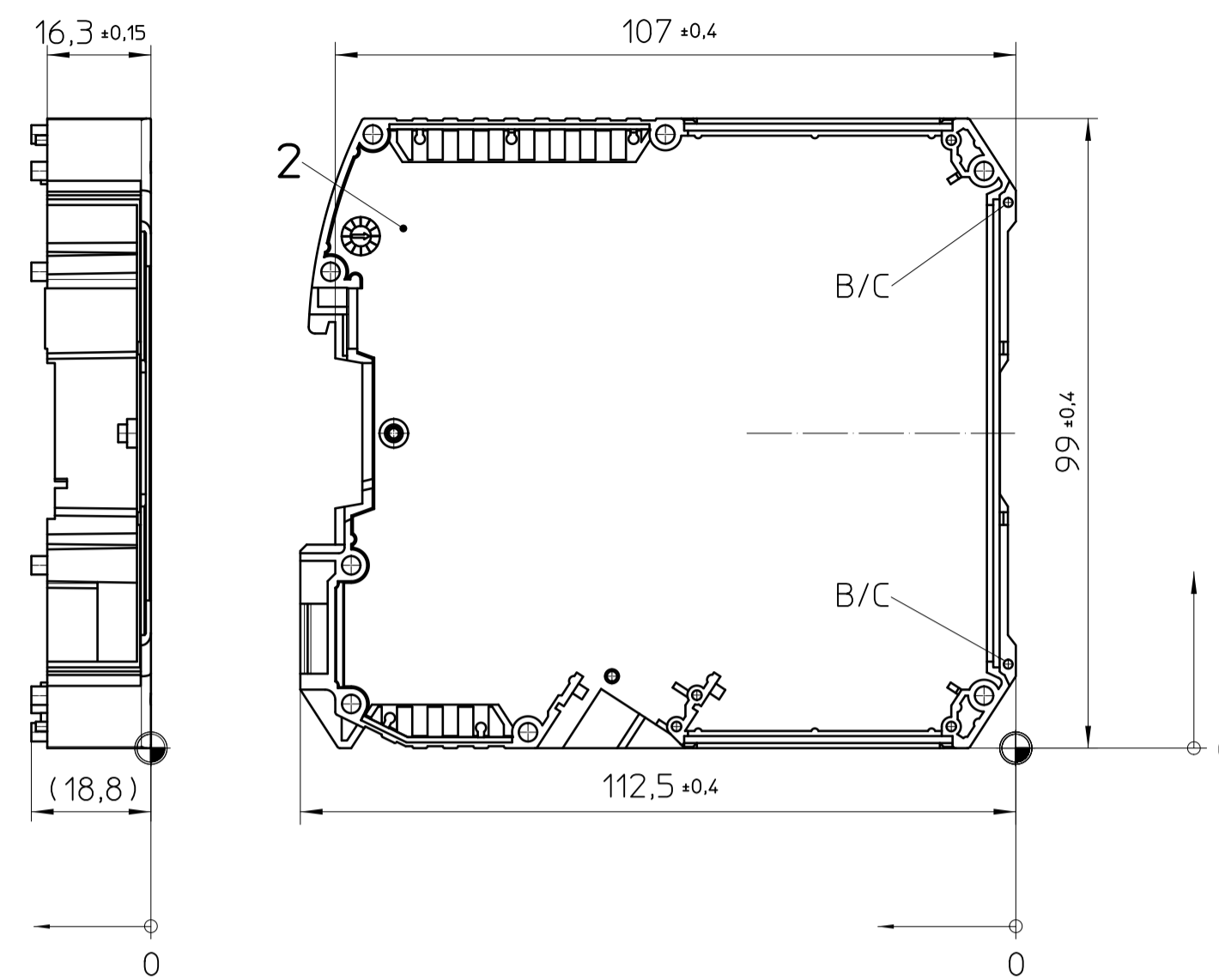


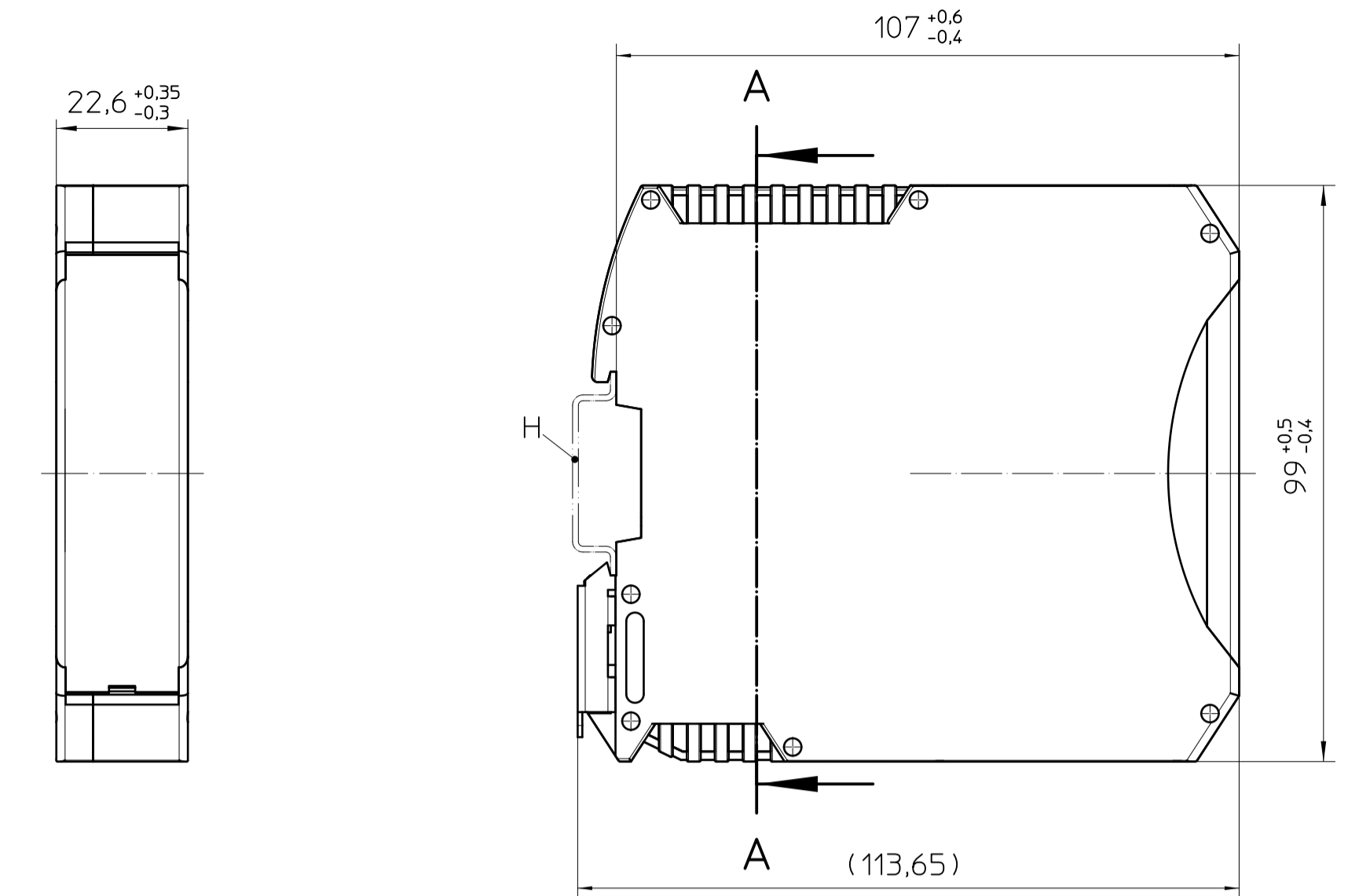
HOUSING LEFT



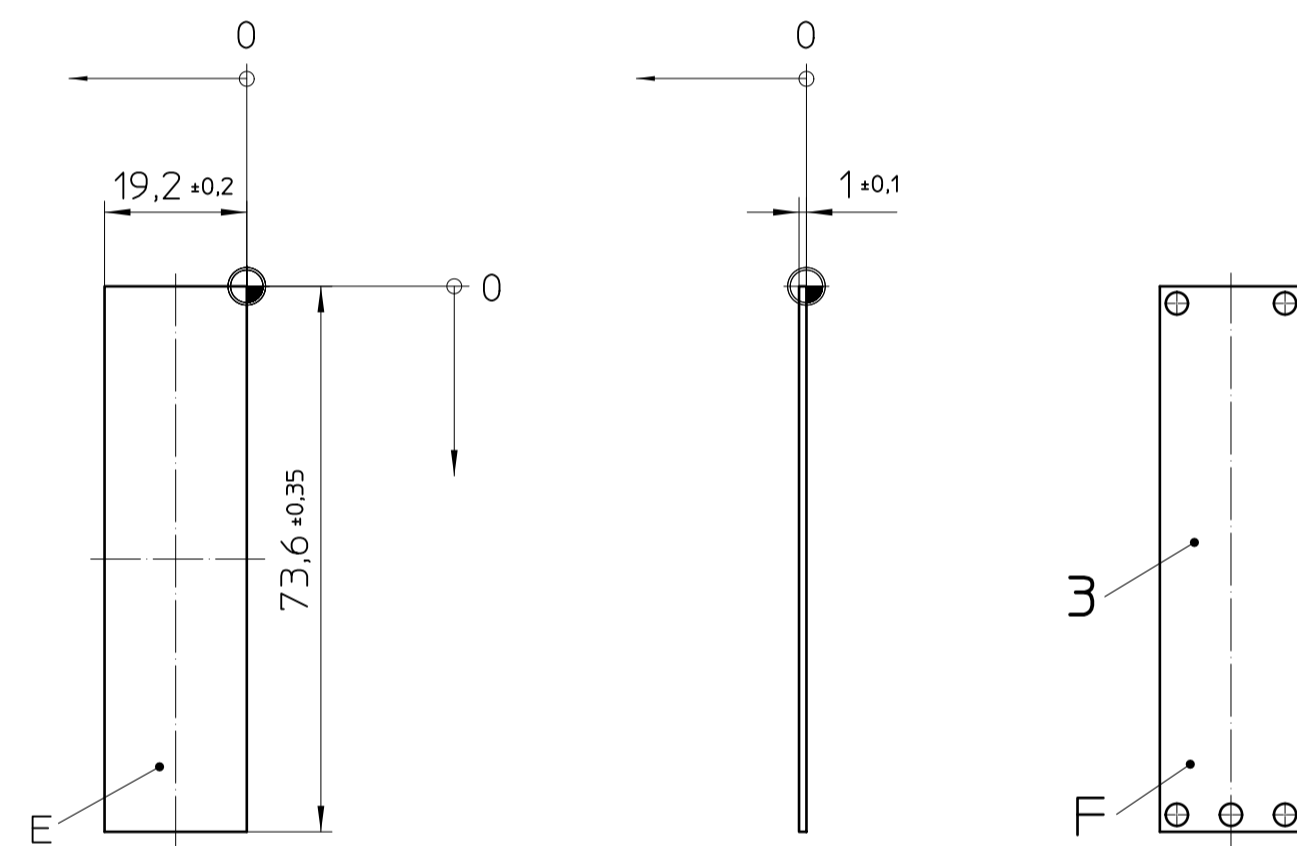
HOUSING RIGHT



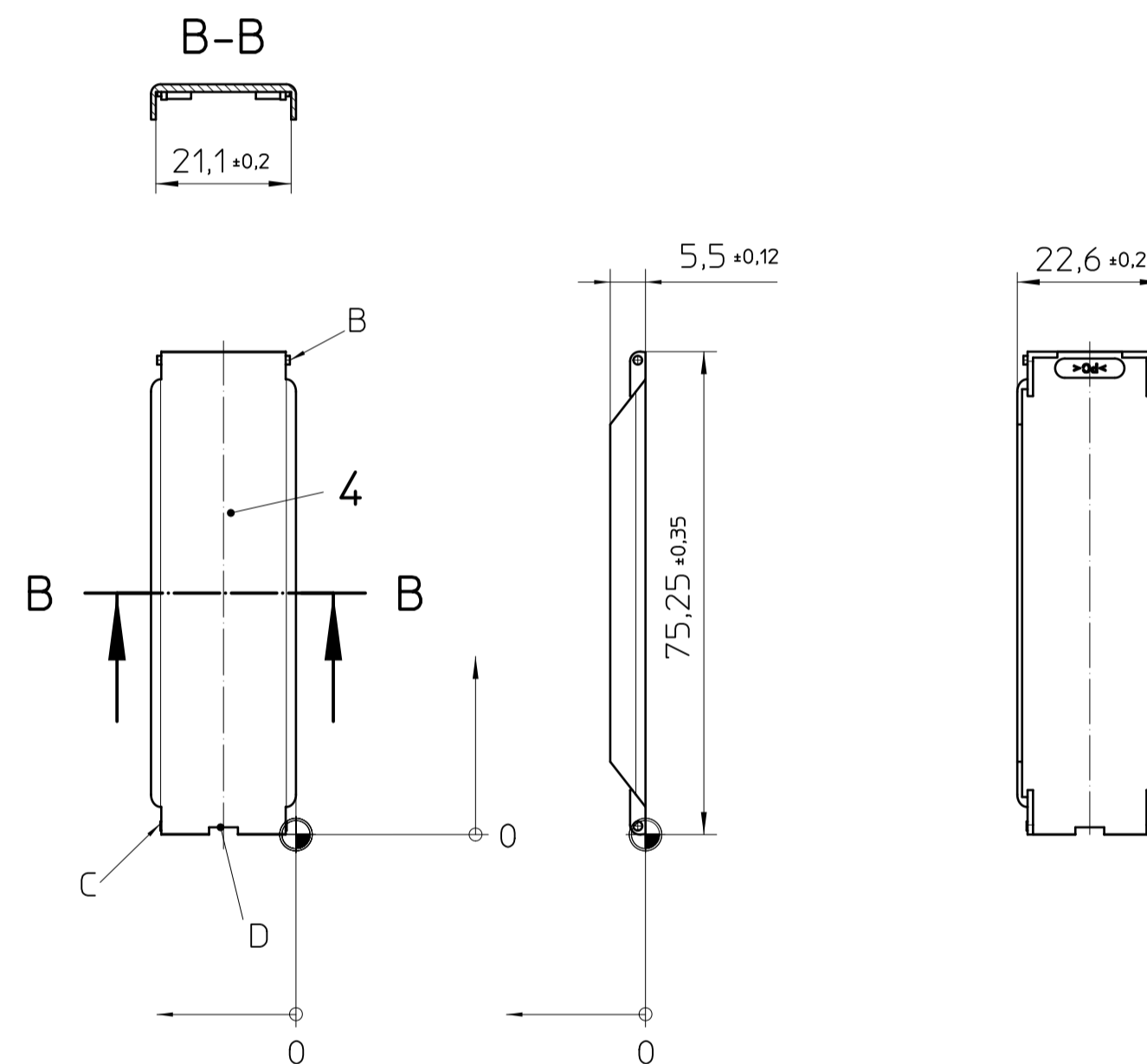
Assembly example: ME MAX 22,5 U-U1



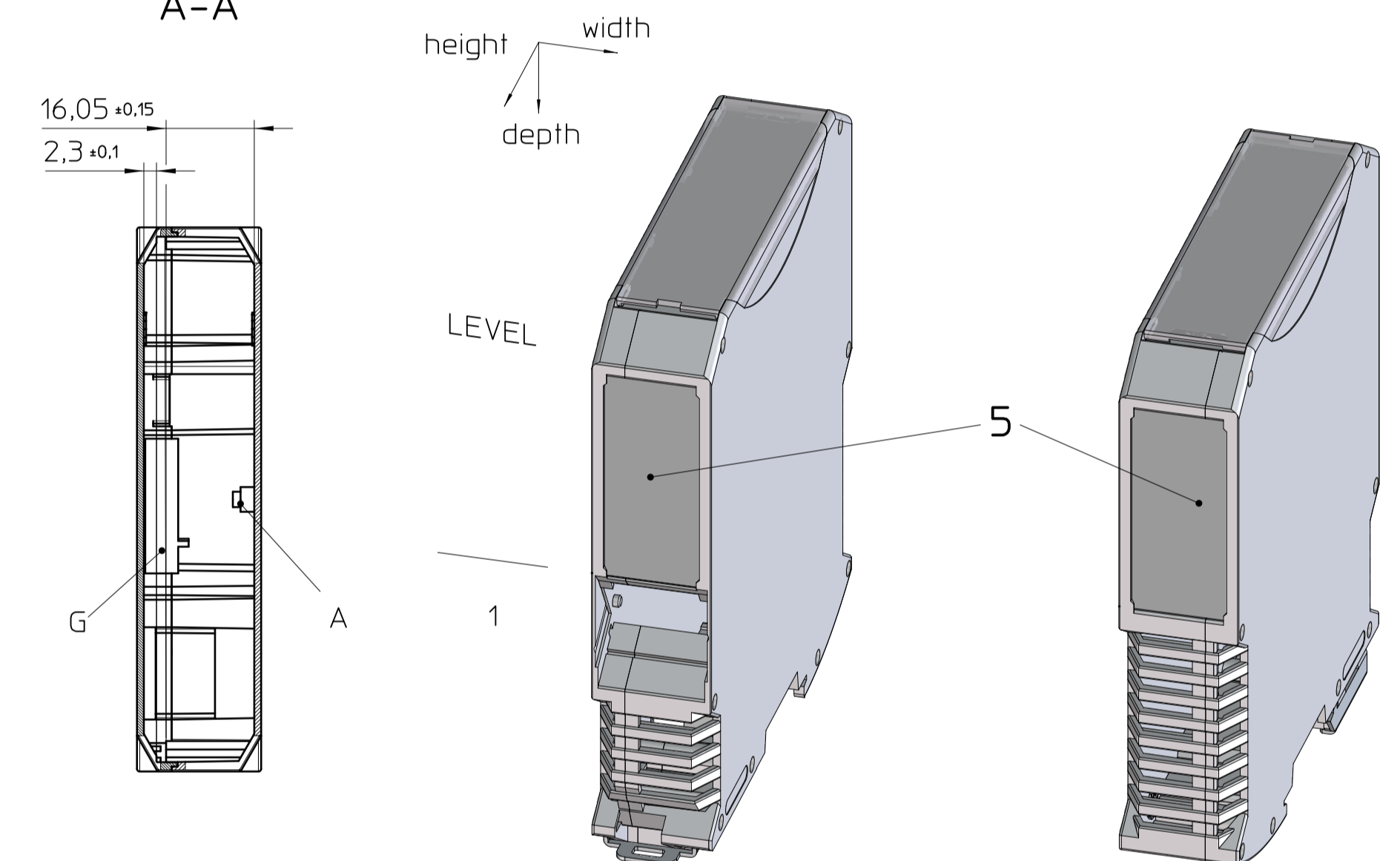
FRONT PLATE



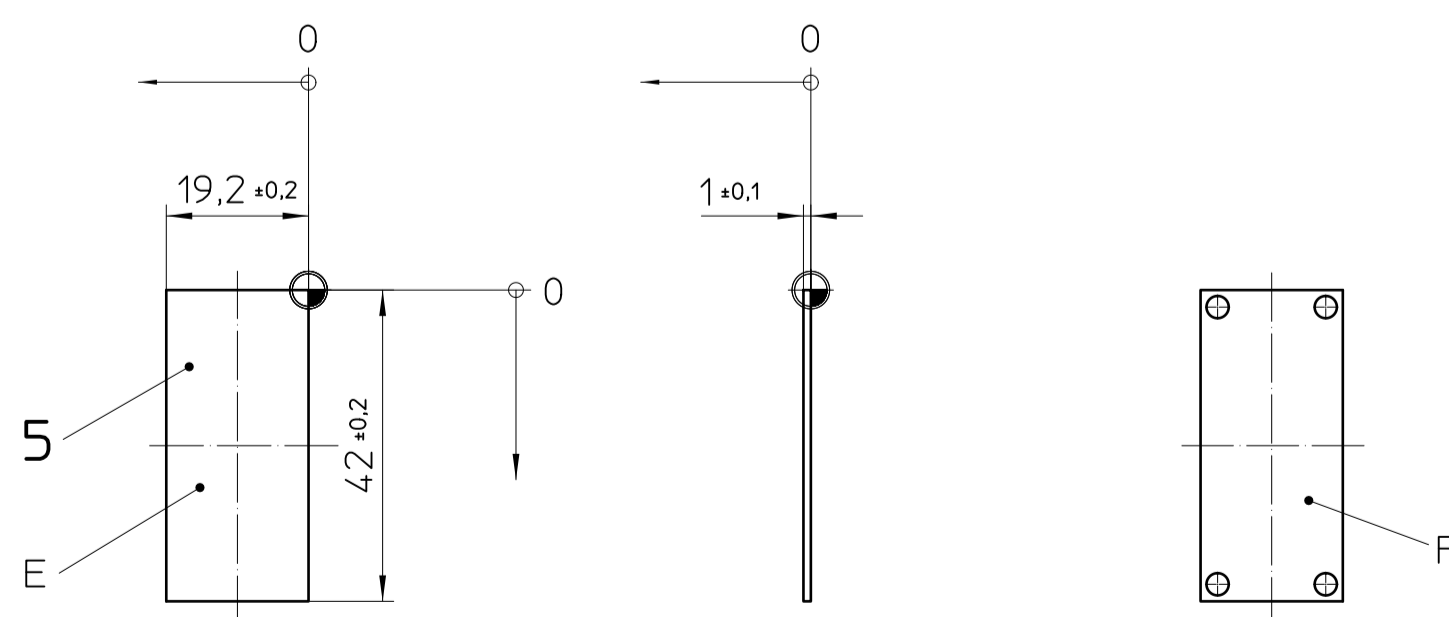
HINGED COVER



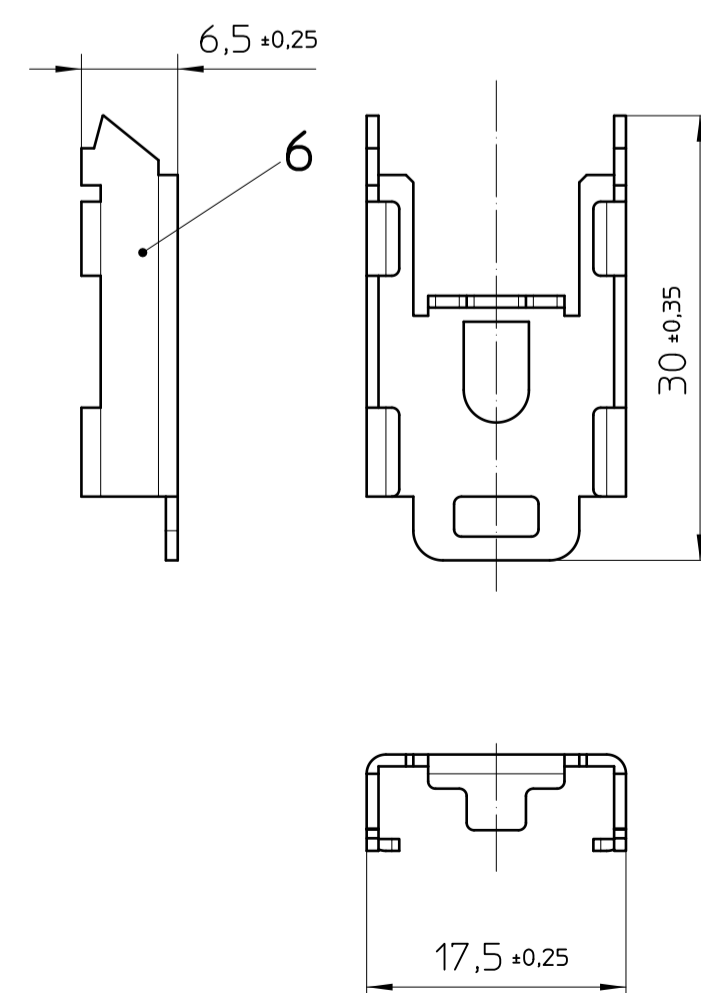
A-A



SIDE PLATE

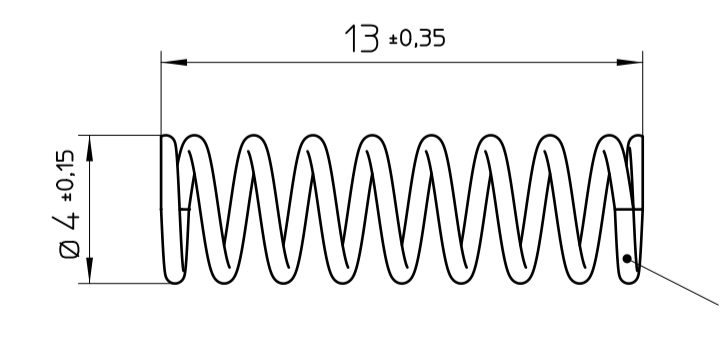


FOOT CATCH



SPRING

5:1



- General Information:
- Simplified representation, exemplary shown in gray.
 - Document excluded from change process
 - Units are in millimeters [mm] and degrees [°]
 - Tolerances apply in a normal climate according to DIN EN ISO 291-23/50-2, PA plastic parts with about 2% (% by weight) moisture content.
 - Workpiece zero point for mechanical processing
 - Tolerances for mechanical processing are ISO 2768-mK
 - Tolerances for printing DIN ISO 2768-m
 - Machining radii min. R1, further on request
 - Web: www.phoenixcontact.com

- Additional Information:
- A. Attachment point for the optional PCB
 - B. Pivot bearing HINGED COVER
 - C. Locking HINGED COVER
 - D. Notch for locking release, by screw driver
 - E. Exposed side
 - F. Inner side
 - G. Recommended PCB outline on www.phoenixcontact.com webcode: #0512
 - H. Mounting rail like EN 60715, TH 35-7,5 or mounting rail similar to EN 60715, TH 35-15x1,5

KIT (not mounted)			
Pos.	QTY	Description	Material
1	1	HOUSING LEFT	PA
2	1	HOUSING RIGHT	PA
3	1	FRONT PLATE	PA
4	1	HINGED COVER	PC
5	1	SIDE PLATE	PA
6	1	FOOT CATCH	STL
7	1	SPRING	STL

Weitergabe sowie Vervielfältigung dieses Dokuments, Verwertung und Mitteilung seines Inhalts sind verboten, soweit nicht ausdrücklich gestattet. In diesem Fall sind die Patente-, Gebrauchsmuster- oder Designrechte vorbehalten.