

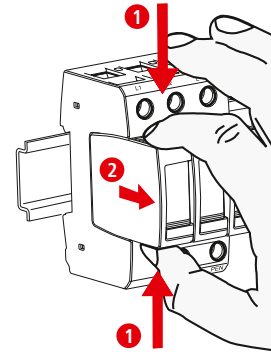
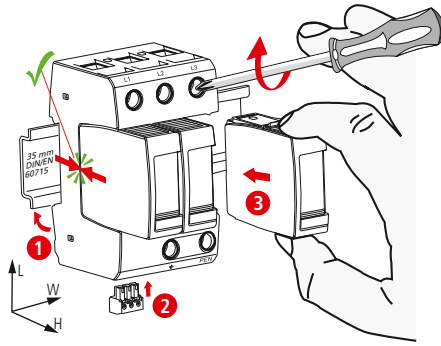
DEHNguard modular DG M WE 600 (FM)

- DE Einbauanleitung
- GB Installation instructions
- IT Istruzioni di montaggio
- FR Instructions de montage
- NL Montagehandleiding
- ES Instrucciones de montaje
- PT Instruções de montagem
- DK Monteringsvejledning
- SE Monteringsanvisning
- FI Aseennusohje
- GR Οδηγίες συναρμολόγησης
- PL Instrukcja montażu
- CZ Montážní návod
- TR Kurulum Talimatları
- RU Инструкция по монтажу
- CN 安装说明
- HU Szerelési útmutató
- JP 設置説明書



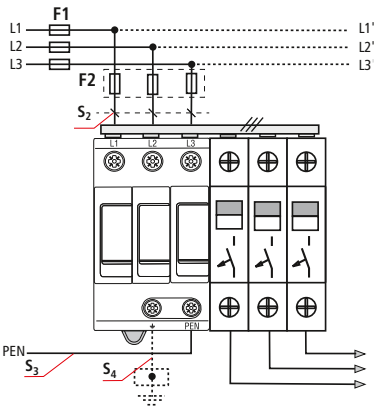
II IEC 61643-11...  
2 EN 61643-11...

PZ 2 4 Nm



DG M WE 600 (FM)	
	DG MOD 750
$U_N$ / Tol.: $\pm 10\%$	480 V
$U_C$	600 V
$U_{mov}$	750 V
$f_N$	50/60 Hz
max. $I_{sc}$	100 A gG
$I_{scCR}$	25 kA <sub>rms</sub>
$I_{max}$	25 kA
$\theta^\circ$	-40°C ... +80°C
$\Phi$	5% ... 95%
$I_{PE}$	< 0.1 mA
IP $\uparrow$ )	20
L x W x H	90 mm x 54 mm x 73 mm

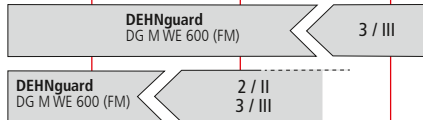
TNC



DEHNguard modular DG M WE 600 (FM),		DEHNguard modular DG M WE 600 (FM),				
F1 A gG	F2 A gG	F1 A gG	S <sub>2</sub> / mm <sup>2</sup>	S <sub>3</sub> / mm <sup>2</sup>	S <sub>4</sub> / mm <sup>2</sup>	F2 A gG
 $F1 \leq 100$ A gG <del><math>F2</math></del>	 $F2 \leq 100$ A gG	25	2.5	6	6	---
		35	4	6	6	---
 $F1 > 100$ A gG	 $F2 \leq 100$ A gG	40	4	6	6	---
		50	6	6	6	---
		63	10	10	10	---
		80	10	10	10	---
		100	16	16	16	---
> 100	16	16	16	100		

min. $\square$ L, N, PEN, $\perp$	1.5 mm <sup>2</sup>	
max. $\square$ L, N, PEN, $\perp$	25 mm <sup>2</sup>	35 mm <sup>2</sup>
$\square$	16 mm <sup>2</sup> Cu $\geq 15.5$ mm	

LPZ 0<sub>A</sub>      LPZ 0<sub>B</sub>      LPZ 1      LPZ 2      LPZ 3



DEHNguard modular  
DG M WE 600 FM

