

PP Metal LC duplex SM GOF

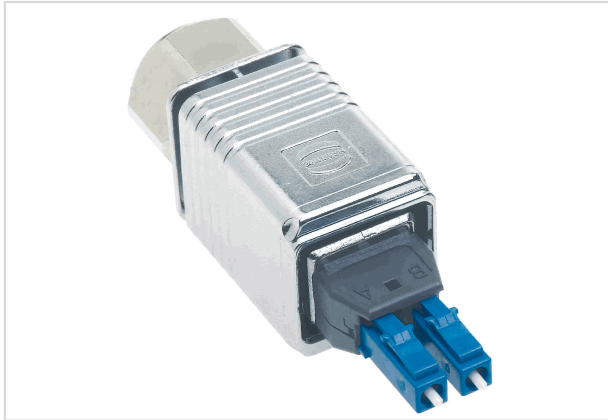


Image is for illustration purposes only. Please refer to product description.

Part number	09 57 409 0501 000
Specification	PP Metal LC duplex SM GOF
HARTING eCatalogue	https://b2b.harting.com/09574090501000

Identification

Category	Connectors
Series	HARTING PushPull (V4)
Identification	LC duplex
Element	Connector sets
Description of the contact	Singlemode

Version

Number of contacts	2
Locking type	PushPull

Technical characteristics

Limiting temperature	-40 ... +70 °C
Mating cycles	≥200
Degree of protection acc. to IEC 60529	IP65 IP67
Cable diameter	5.8 ... 7.2 mm

Material properties

Material (hood/housing)	Metal
Material flammability class acc. to UL 94	V-0
RoHS	compliant with exemption

RoHS exemptions

6(b) / 6(b)-II: Lead as an alloying element in aluminium containing up to 0,4 % lead by weight / Lead as an alloying element in aluminium for machining purposes with a lead content up to 0,4 % by weight
6(c): Copper alloy containing up to 4 % lead by weight



Pushing Performance
Since 1945

Material properties

ELV status	compliant with exemption
China RoHS	50
REACH Annex XVII substances	Not contained
REACH ANNEX XIV substances	Not contained
REACH SVHC substances	Yes
REACH SVHC substances	6,6'-di-tert-butyl-2,2'-methylenedi-p-cresol Lead
California Proposition 65 substances	Yes
California Proposition 65 substances	Antimony trioxide Lead Nickel Naphthalene

Specifications and approvals

Specifications	IEC 61076-3-106 Variant 4 (V4)
Approvals	DNV GL

Commercial data

Packaging size	10
Net weight	90.66 g
Country of origin	Romania
European customs tariff number	85366990
eCl@ss	27440114 Rectangular connector (for field assembly)