

## Han Brid-RJ45 C-M RJ Industrial

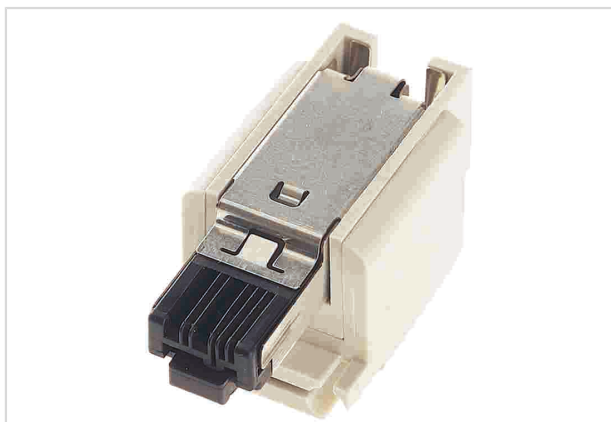


Image is for illustration purposes only. Please refer to product description.

Part number	09 12 003 3011
Specification	Han Brid-RJ45 C-M RJ Industrial
HARTING eCatalogue	<a href="https://b2b.harting.com/09120033011">https://b2b.harting.com/09120033011</a>

### Identification

Category	Inserts
Series	Han-Brid®
Identification	Han-Brid® RJ45 C
Specification	hybrid network connector

### Version

Gender	Male
Size	3 A
Number of contacts	2
further contacts	+ RJ45
Details	With RJ Industrial

### Technical characteristics

Conductor cross-section	0.22 ... 0.32 mm <sup>2</sup> Stranded
	0.26 ... 0.32 mm <sup>2</sup> Solid
Conductor cross-section	AWG 24 ... AWG 22 Stranded
	AWG 23 ... AWG 22 Solid
Wire outer diameter	≤1.6 mm
Rated current	10 A
Rated voltage	24 V
Rated impulse voltage	0.8 kV
Pollution degree	3
Transmission characteristics	Cat. 5 Class D up to 100 MHz



Pushing Performance  
Since 1945

## Technical characteristics

Data rate	10 Mbit/s 100 Mbit/s
Insulation resistance	$>10^{10} \Omega$
Limiting temperature	-40 ... +70 °C
Mating cycles	$\geq 500$

## Material properties

Material (insert)	Polycarbonate (PC)
Colour (insert)	RAL 7032 (pebble grey)
Material flammability class acc. to UL 94	V-0
RoHS	compliant
ELV status	compliant
China RoHS	e
REACH Annex XVII substances	Not contained
REACH ANNEX XIV substances	Not contained
REACH SVHC substances	Not contained
California Proposition 65 substances	Yes
California Proposition 65 substances	Lead Nickel
Fire protection on railway vehicles	EN 45545-2 (2020-08)
Requirement set with Hazard Levels	R26

## Specifications and approvals

Specifications	IEC 61984
UL / CSA	UL 1977 ECBT2.E235076 CSA-C22.2 No. 182.3 ECBT8.E235076

## Commercial data

Packaging size	1
Net weight	18.98 g
Country of origin	Germany
European customs tariff number	85366990
GTIN	5713140016880
eCl@ss	27440205 Contact insert for industrial connectors