

D-Sub M 2W2C male straight 40 A

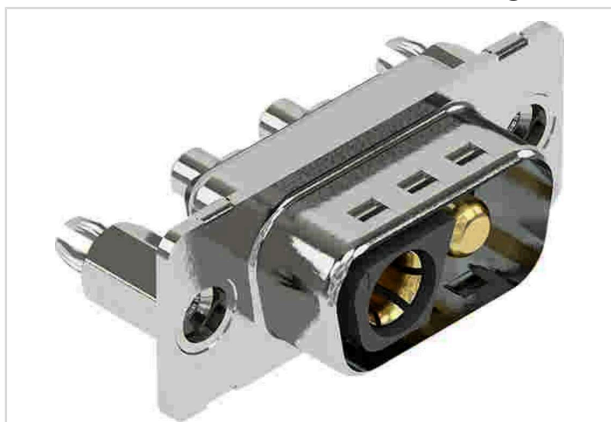


Image is for illustration purposes only. Please refer to product description.

Part number	09 69 100 9126
Specification	D-Sub M 2W2C male straight 40 A
HARTING eCatalogue	https://b2b.harting.com/09691009126

Identification

Category	Connectors
Series	D-Sub
Identification	Mixed
Element	Connector
Description of the contact	Turned Straight

Version

Termination method	Wave soldering termination
Gender	Male
Size	D-Sub 1
Number of contacts	2
Number of signal contacts	0
Number of power contacts	2
Coding	With coding
PCB fixing	With board locks
Locking type	Fixing flange with thread 4-40 UNC

Technical characteristics

Flange height	7.5 mm
Rated current (power)	40 A
Clearance distance	1.3 mm
Creepage distance	1.4 mm



Pushing Performance
 Since 1945

Technical characteristics

Insulation resistance	$>10^5 \Omega$
Tightening torque	$\leq 0.6 \text{ Nm}$ Female screw lock
Limiting temperature	$-55 \dots +125 \text{ }^\circ\text{C}$
Performance level	NM 30 (S4) 1
Mating cycles	≥ 500
Test voltage $U_{r.m.s.}$	1 kV
Isolation group	IIIa ($175 \leq \text{CTI} < 400$)
PCB thickness	1.6 mm
Hot plugging	No

Material properties

Material (insert)	Thermoplastic resin, glass-fibre filled (PBT) Shell: steel, tin plated
Colour (insert)	Black
Material (contacts)	Copper alloy
Surface (contacts)	Gold plated Mating side Sn over Ni Termination side
Layer thickness	$\geq 0.76 \mu\text{m}$
Layer thickness	$\geq 30 \mu\text{inch}$
Material flammability class acc. to UL 94	V-0
RoHS	compliant with exemption
RoHS exemptions	6(c): Copper alloy containing up to 4 % lead by weight
ELV status	compliant with exemption
China RoHS	50
REACH Annex XVII substances	Not contained
REACH ANNEX XIV substances	Not contained
REACH SVHC substances	Yes
REACH SVHC substances	Lead
ECHA SCIP number	ecef7555-f643-4ceb-a337-fc54762297f1
California Proposition 65 substances	Yes
California Proposition 65 substances	Lead Nickel
Fire protection on railway vehicles	EN 45545-2 (2020-08)



Pushing Performance
Since 1945

Material properties

Requirement set with Hazard Levels R26

Specifications and approvals

Specifications	DIN 41652-1 CECC 75301-802
----------------	-------------------------------

Commercial data

Packaging size	25
Net weight	10 g
Country of origin	Germany
European customs tariff number	85366990
GTIN	5713140279643
ETIM	EC001136
eCl@ss	27440214 D-Sub coupler