

Han-Snap Panel mounting parts

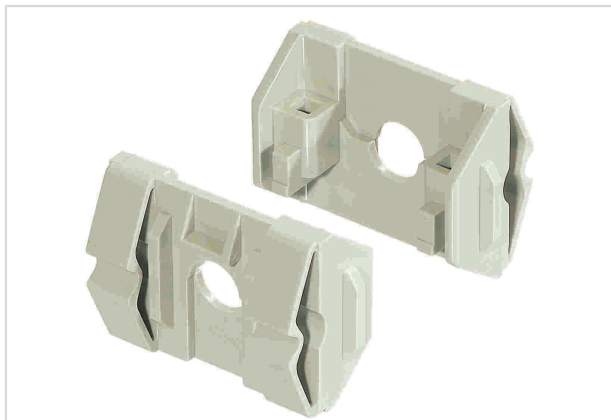


Image is for illustration purposes only. Please refer to product description.

| | |
|--------------------|---|
| Part number | 09 33 000 9985 |
| Specification | Han-Snap Panel mounting parts |
| HARTING eCatalogue | https://b2b.harting.com/09330009985 |

Identification

| | |
|-------------------|----------------------|
| Category | Accessories |
| Series | Han-Snap® |
| Type of accessory | Panel mounting parts |

Version

| | |
|---------------|--|
| Details | Size 10 A / 16 A by using the corresponding adapter! |
| Pack contents | 2 plastic panel mounting parts sufficient for one insert or terminal block connector |

Technical characteristics

| | |
|----------------------|-----------------------------------|
| Tightening torque | 0.8 Nm |
| Limiting temperature | -40 ... +125 °C |
| Retention force | ≥250 N in the sheet-metal cut out |

Material properties

| | |
|---|------------------------|
| Material (accessories) | Polycarbonate (PC) |
| Colour (accessories) | RAL 7032 (pebble grey) |
| Material flammability class acc. to UL 94 | V-0 |
| RoHS | compliant |
| ELV status | compliant |
| China RoHS | e |
| REACH Annex XVII substances | Not contained |
| REACH ANNEX XIV substances | Not contained |
| REACH SVHC substances | Yes |



Pushing Performance
Since 1945

Material properties

| | |
|-------------------------------------|---|
| REACH SVHC substances | Potassium 1,1,2,2,3,3,4,4,4-nonafluorobutane-1-sulphonate |
| Fire protection on railway vehicles | EN 45545-2 (2020-08) |
| Requirement set with Hazard Levels | R22 (HL 1-3) R23 (HL 1-3) |

Specifications and approvals

| | |
|----------------|--|
| Specifications | IEC 60068-2-6 Vibration (sinusoidal) IEC 60068-2-27 Shock |
|----------------|--|

Commercial data

| | |
|--------------------------------|----------------------------------|
| Packaging size | 10 |
| Net weight | 1 g |
| Country of origin | Germany |
| European customs tariff number | 85389099 |
| GTIN | 5713140050631 |
| eCl@ss | 27440392 Connector (accessories) |