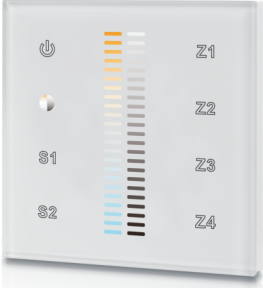

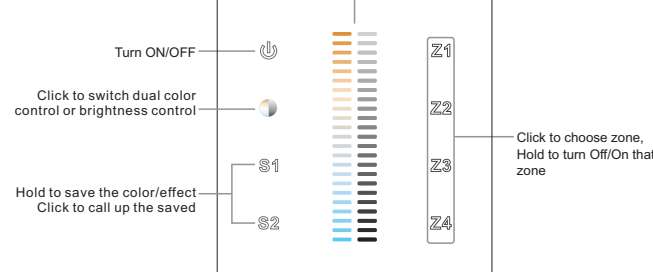
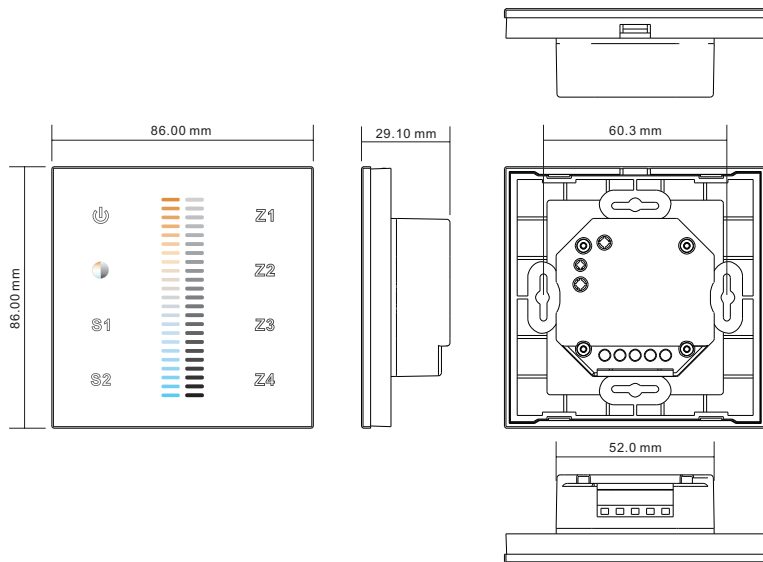


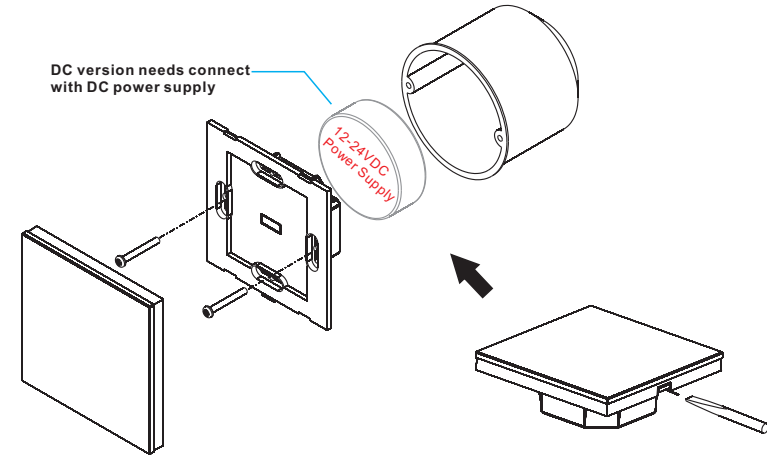
- Touch sensitive
- Glass interface(white & black)
- Compatible with all universal series RF receivers
- Control 4 zones synchronously and separately

Picture		Brief introduction of buttons	
		<p>Dual color & brightness slide, click  to switch</p> 	
<p>Operation Voltage 12-24V DC/ 100-240V AC</p>	<p>Operation Frequency 868MHz</p>	<p>Note : This remote controls 4 zones (areas) receivers, each zone can pair with countless receivers. 1 receiver can be paired by max 8 different remote controls.</p>	

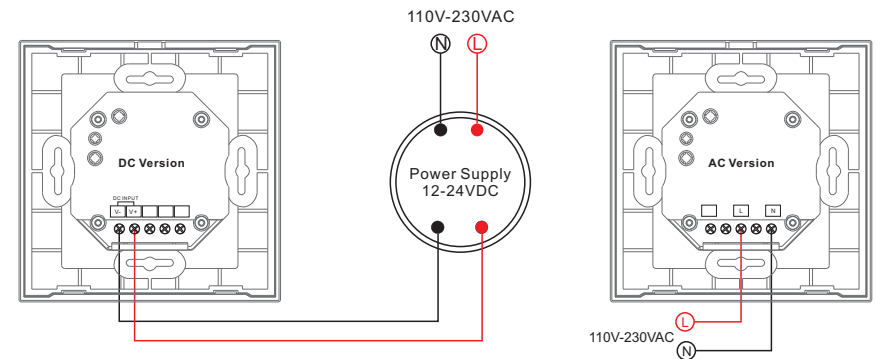
Size



Installation

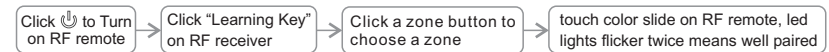


Wiring diagram

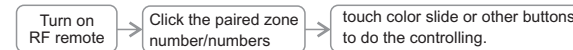


Operation

1. Pair with RF receivers:



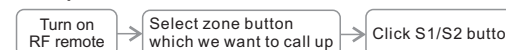
2. Play the remote after pairing:



3. Save color/scene:



4. Call up the saved:



5. How to delete the pairing:

Power on the RF receiver, hold the "Learning Key" over 3 seconds until connected led lights flicker twice means well deleted.