



Produktdatenblatt

Art. Nr. 96.452.7003.6

Konfektionierte Leitung RST20i5KSB- 15P 70TB0

RST20i5 Anschlussleitung Buchse - freies Ende, 5-polig,
konfektioniert mit Schraubtechnik, Anwendung 250V mit PE,
16A, Kabeltyp H05VV-F, Länge 7,0m, Leiterquerschnitt 1,5mm²,
Kodierfarbe türkisblau



Art. Nr.	96.452.7003.6
EAN	4015573941915
Bestelleinheit	5 Stück

Zulassungen

Technische Daten
Hinweis

Hinweis	Die Gesamtlänge kann um bis zu + / - 3 % abweichen.
---------	---

Allgemein

Bemessungsstrom	16 A
Bemessungsspannung	250 V
Bemessungsstoßspannung	4 kV
Verschmutzungsgrad	3
Verriegelbar	selbstverriegelnd (mit Werkzeug lösbar)
Codierfarbe / Kontakteinsatz	türkisblau
Polkennzeichnung	D1, D2, L, PE, N
Gehäusefarbe mit Zugentlastung	schwarz

Ausführung

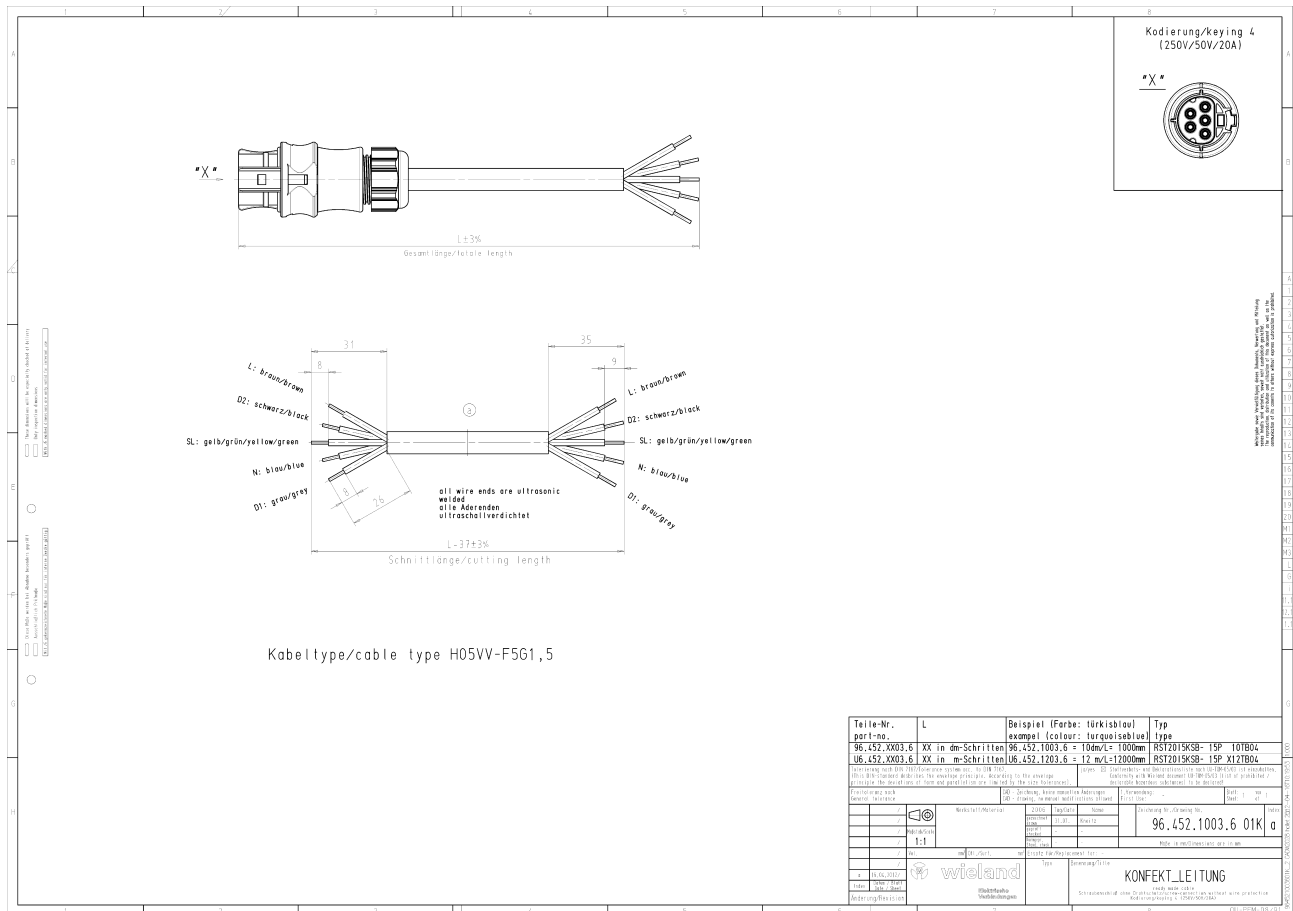
Bauart	Kabelverschraubung
Anschlussart	Schraubanschluss
Leiter-Nennquerschnitt	1,5 mm ²
Schutzart (IP)	IP66/68 (3m;2h) /IP69
Abisolierlänge	9 mm
Abmantellänge	35 mm
Leiterendenbehandlung	ultraschallverdichtete Aderenden
Typ der Leitung	H05VV-F
Farbe der Leitung	schwarz
Kabeldurchmesser min.	9,8 mm
Kabeldurchmesser max.	10,4 mm
Leitungsart	Buchse - freies Ende
Art der konfektionierten Leitung	Anschlussleitung
Ausführung Seite 1	Buchse
Ausführung Seite 2	freies Leitungsende
Geschirmt	nein


Werkstoff

Oberflächenbehandlung	versilbert
Halogenfrei	nein
Leitung Dauertemperaturbeständigkeit	70 °C
Isolierteil Dauertemperaturbeständigkeit	100 °C
Brandlast	4,448 kWh
Brandklasse	Eca

Abmessungen

Gesamtlänge	7 m
-------------	-----

Technische Zeichnung


Teile-Nr. part-no.	L	Beispiel (Farbe: türkisblau) example (colour: turquoiseblue)	Typ
96.452.XX03.6	XX in dm-Schritten	96.452.1003.6 = 100m	RST2015KSB-15P 10TBDL
96.452.XX03.6	XX in m-Schritten	96.452.1203.6 = 12 m/L=1200mm	RST2015KSB-15P X12TBDL
<small> The cable is not for use in explosion-protected areas. The cable is not for use in areas where it is exposed to fire. The cable is not for use in areas where it is exposed to mechanical stress. The cable is not for use in areas where it is exposed to chemical attack. The cable is not for use in areas where it is exposed to UV radiation. The cable is not for use in areas where it is exposed to ozone. The cable is not for use in areas where it is exposed to high temperatures. The cable is not for use in areas where it is exposed to low temperatures. The cable is not for use in areas where it is exposed to moisture. The cable is not for use in areas where it is exposed to salt crystallization. The cable is not for use in areas where it is exposed to acid rain. The cable is not for use in areas where it is exposed to industrial pollution. The cable is not for use in areas where it is exposed to air pollution. The cable is not for use in areas where it is exposed to soil pollution. The cable is not for use in areas where it is exposed to water pollution. The cable is not for use in areas where it is exposed to noise. The cable is not for use in areas where it is exposed to vibration. The cable is not for use in areas where it is exposed to electromagnetic interference. The cable is not for use in areas where it is exposed to radio frequency interference. The cable is not for use in areas where it is exposed to static electricity. The cable is not for use in areas where it is exposed to lightning. The cable is not for use in areas where it is exposed to fire. The cable is not for use in areas where it is exposed to explosion. The cable is not for use in areas where it is exposed to impact. The cable is not for use in areas where it is exposed to crushing. The cable is not for use in areas where it is exposed to bending. The cable is not for use in areas where it is exposed to twisting. The cable is not for use in areas where it is exposed to stretching. The cable is not for use in areas where it is exposed to compression. The cable is not for use in areas where it is exposed to tension. The cable is not for use in areas where it is exposed to shear. The cable is not for use in areas where it is exposed to torsion. The cable is not for use in areas where it is exposed to buckling. The cable is not for use in areas where it is exposed to instability. The cable is not for use in areas where it is exposed to failure. </small>			
96.452.1003.6 01K a			Blatt 1 von 1
 KONFEKT_LEITUNG			