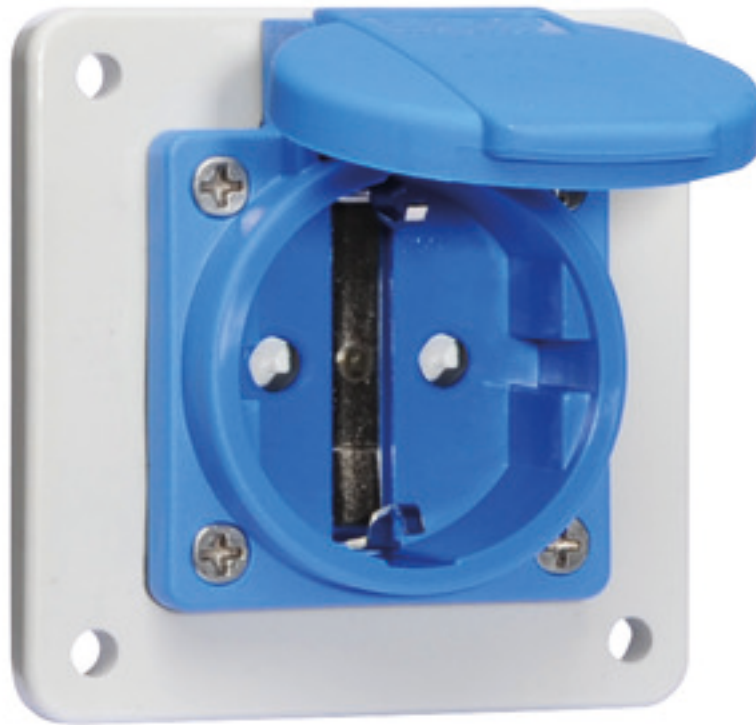


Domestic panel mounting socket outlet, with increased contact protection (shutter), for stationary distributor systems - flange 75x75, fixing centers 60x60



Product description	
BALS-Prd.-Nr	7110809
EAN	4024941854108
product category (PG)	Domestic panel mounting socket outlet Quick-Connect screwless push-contact System F German standard
current (A)	16A
number of poles (P99)	3p
number of poles (P)	2P+PE
voltage (V)	250V

Product description	
frequency (HZ)	alternating current (AC)
protection degree (SA)	IP54
colour code 1 (KF1)	blue RAL 5015
Colour of appliance	Enclosure blue RAL 5015, Hinged lid blue RAL 5015
connection design (AT)	screwless
maximum conductor size (LQ)	4,0 qmm
Height	75mm
Width	75mm
Depth	47.5mm
Flange size vertical	75mm
Flange size horizontal	75mm
Drill hole distance vertical	60mm
Drill hole distance horizontal	60mm
material of enclosure (GM)	Polyamide
contact	The contact carrier is made of polyamide, the contacts are brass nickel plated

Additional technical properties	
	The connection is rear, For use in stationary distributor distributor systems, With increased contact protection (shutter)

Logistics data	
Weight/pcs	0.093 kg / Piece

Logistics data	
Packaging	Bag
Content amount	1 ST
EAN	4024941854108
Length	47.5 mm
Width	75 mm
Height	75 mm
Weight	0.094 kg
Volume	267.188 ccm
Packaging	Carton
Content amount	20 ST
EAN	4024941323499
Length	275 mm
Width	175 mm
Height	137 mm
Weight	1.985 kg
Volume	5,737.5 ccm



18 MB 107