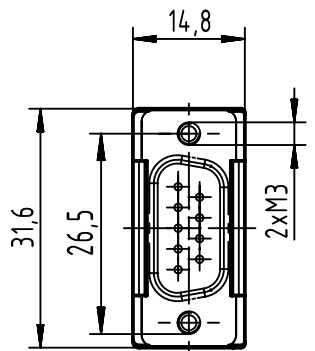
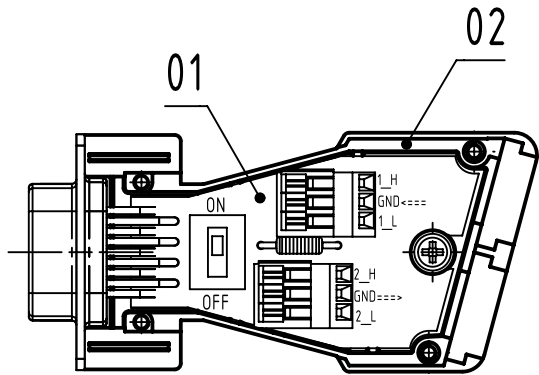
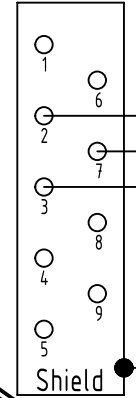


View without cover

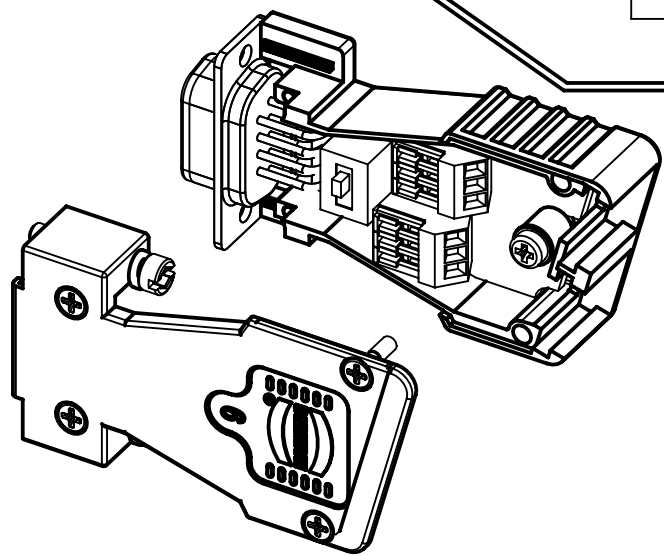
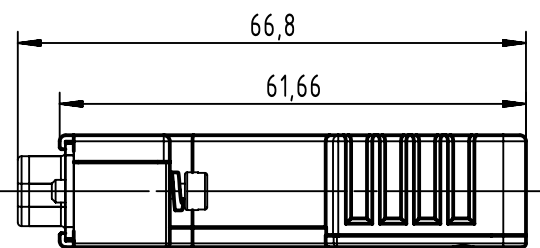
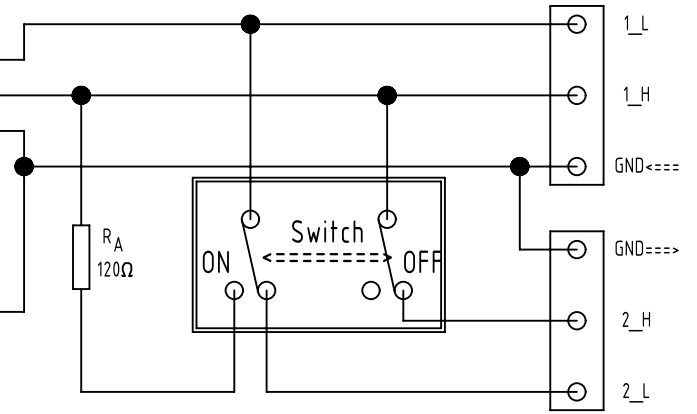


D-Sub 9 poles



CAN Interface

Schematic



Number	Description
2	Crimp flange 6,0-7,0
2	Crimp ferrule 10,0-11,0
1	Blanking piece 9-37

	All rights reserved Department EL PD	All Dimensions in mm Original Size DIN A4	Scale 1:1	Free size tol.	Ref. Sub.
		Created by ZHUANGJ	Inspected by LUOK	Standardisation ROEBEN	Date 2021-11-11
Title InduCom 9 Male CAN M3		Type TB			Number 66630095007
Part number 6663 009 5007 777		Performance level S4	Remark Small batch		Doc-Key / ECM-Nr. 100073158/UGD/011/G 500000204.114
Part number 6663 009 5007		Performance level S4	Remark Standard batch		Rev. G
Part number 6663 009 5007		Performance level S4	Remark Standard batch		Page 1/1