

Han-INOX 3A-SMH-M20

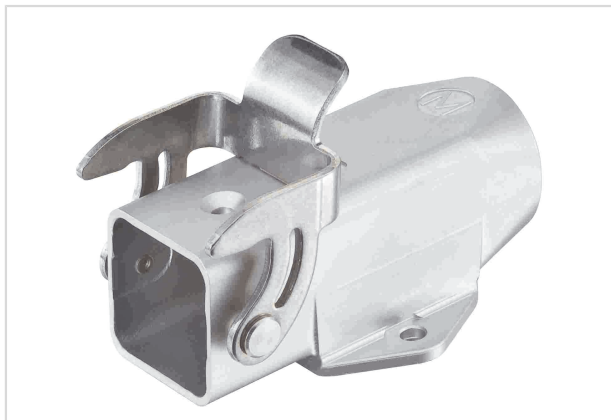


Image is for illustration purposes only. Please refer to product description.

Part number	19 44 003 1250
Specification	Han-INOX 3A-SMH-M20
HARTING eCatalogue	https://b2b.harting.com/19440031250

Identification

Category	Hoods/Housings
Series of hoods/housings	Han-INOX®
Type of hood/housing	Surface mounted housing
Description of hood/housing	With seal

Version

Size	3 A
Version	Side entry
Cable entry	1x M20
Locking type	Single locking lever
Field of application	Hoods/housings for harsh environments
Pack contents	With seal screw

Technical characteristics

Limiting temperature	-40 ... +125 °C
Degree of protection acc. to IEC 60529	IP65 IP67
Type rating acc. to UL 50 / UL 50E	4 4X 12

Material properties

Material (hood/housing)	Stainless steel
Surface (hood/housing)	Uncoated



Pushing Performance
Since 1945

Material properties

Colour (hood/housing)	Unpainted
Material (seal)	NBR
Material (locking)	Stainless steel
RoHS	compliant
ELV status	compliant
China RoHS	e
REACH Annex XVII substances	Not contained
REACH ANNEX XIV substances	Not contained
REACH SVHC substances	Not contained
California Proposition 65 substances	Yes
California Proposition 65 substances	Nickel Naphthalene

Specifications and approvals

Approvals	DNV GL
UL / CSA	UL 1977 ECBT2.E235076 CSA-C22.2 No. 182.3 ECBT8.E235076
CE	Yes

Commercial data

Packaging size	1
Net weight	94.25 g
Country of origin	Germany
European customs tariff number	85389099
GTIN	5713140131965
eCl@ss	27440202 Shell for industrial connectors