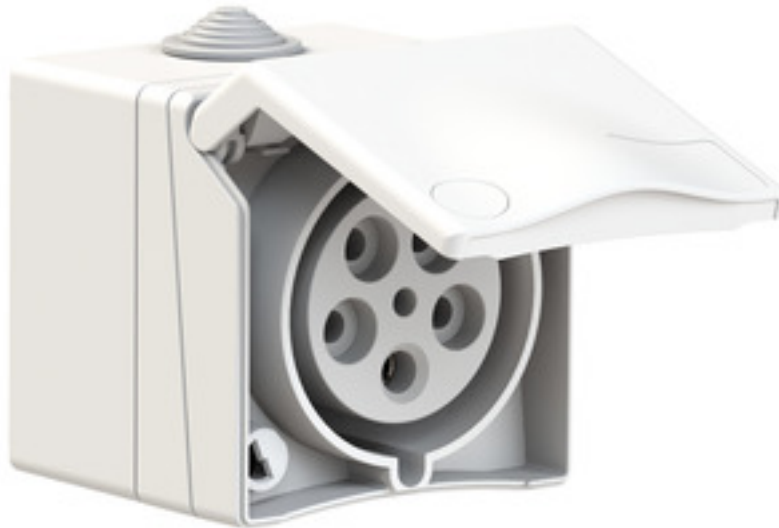


## Wall mounting socket outlet - housing dimensions 90x90



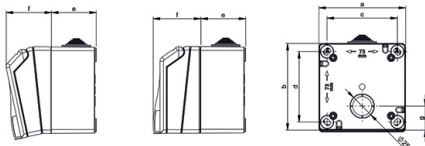
Product description	
BALS-Prd.-Nr	110712
EAN	4024941222303
Product category	Wall mounting socket outlet
Current	32A
Number of poles	5p
Arrangement of phases	3p+N+PE
Position of earth contact	6 h
Voltage	200/346 - 240/415V~
Frequency	50/60Hz

Product description	
Protection degree	IP44
Colour code	red RAL 3000
Colour of appliance	white similar to RAL 9016
Connection design	with screw terminal
Maximum conductor size	10,0 qmm
Cable entry	Anti-kink sleeve
Height	90mm
Width	90mm
Depth	95mm
Dimension of enclosure	90x90 mm
Material of enclosure	ABS + Polycarbonate
Contacts	the contacts are brass nickel plated

Additional technical properties	
	Architecture programme TH, hinged lid with labelling field (optional: key lock), The cable entry is one at top open and one at bottom and one rear side closed

Logistics data	
Weight/pcs	0.376 kg / Piece
Packaging	Bag
Content amount	1 ST
EAN	4024941222303

Logistics data	
Length	95 mm
Width	90 mm
Height	90 mm
Weight	0.377 kg
Packaging	Carton
Content amount	6 ST
EAN	4024941222600
Length	370 mm
Width	218 mm
Height	125 mm
Weight	2.429 kg
Volume	9,329.4 ccm



Ampere Poles	16 3	16 4	16 5	32 5	Schutzk. Domestic
a	90,0	90,0	90,0	90,0	90,0
b	90,0	90,0	90,0	90,0	90,0
c	73,0	73,0	73,0	73,0	73,0
d	73,0	73,0	73,0	73,0	73,0
e	47,0	47,0	47,0	47,0	47,0
f	48,0	48,0	48,0	48,0	48,0
g	25,0	25,0	25,0	25,0	25,0
Cond. mm <sup>2</sup> min.	1,0	1,0	1,0	2,5	1,0
Cond. mm <sup>2</sup> max.	4,0	4,0	4,0	10	2,5

4MB463

