

## Han K6/6-M-c

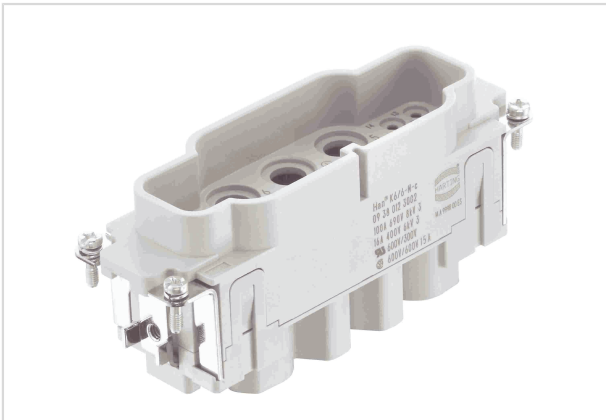


Image is for illustration purposes only. Please refer to product description.

Part number	09 38 012 3002
Specification	Han K6/6-M-c
HARTING eCatalogue	<a href="https://b2b.harting.com/09380123002">https://b2b.harting.com/09380123002</a>

### Identification

Category	Inserts
Series	Han-Com <sup>®</sup>
Identification	Han <sup>®</sup> K 6/6

### Version

Termination method	Crimp termination
Gender	Male
Size	24 B
Number of contacts	12
Number of signal contacts	6
Number of power contacts	6
PE contact	Yes
Details	Please order crimp contacts separately. Please order coding pins separately.

### Technical characteristics

Conductor cross-section	10 ... 25 mm <sup>2</sup> 0.14 ... 2.5 mm <sup>2</sup> Signal
Wire outer diameter	≤12.8 mm
Rated current	100 A
Rated voltage	690 V
Rated impulse voltage	8 kV
Pollution degree	3



Pushing Performance  
Since 1945

## Technical characteristics

Rated current (signal)	16 A
Rated voltage (signal)	400 V
Rated impulse voltage (signal)	6 kV
Pollution degree (signal)	3
Insulation resistance	$>10^{10} \Omega$
Limiting temperature	-40 ... +125 °C
Mating cycles	$\geq 500$

## Material properties

Material (insert)	Polycarbonate (PC)
Colour (insert)	RAL 7032 (pebble grey)
Material flammability class acc. to UL 94	V-0
RoHS	compliant
ELV status	compliant
China RoHS	e
REACH Annex XVII substances	Not contained
REACH ANNEX XIV substances	Not contained
REACH SVHC substances	Not contained
California Proposition 65 substances	Yes
California Proposition 65 substances	Lead Nickel
Fire protection on railway vehicles	EN 45545-2 (2020-08)
Requirement set with Hazard Levels	R22 (HL 1-3) R23 (HL 1-3)

## Specifications and approvals

Specifications	IEC 60664-1 IEC 61984
Approvals	DNV GL

## Commercial data

Packaging size	1
Net weight	99.8 g
Country of origin	Germany
European customs tariff number	85389099



**Pushing Performance**  
Since 1945

## Commercial data

GTIN	5713140186439
eCl@ss	27440205 Contact insert for industrial connectors