

# FROSTER BL 330 PRO-ACTIVE

according to DIN 13277

## Equipment

- Key switch
- Forced-air cooling
- 4 drawers
- Automatic fast defrosting
- Door frame heater
- Condensate evaporation
- Potential-free contact
- Digital temperature display
- Comfortable access
- Visual and audible alarm signal
- Minimum/maximum temperature memory



**MADE IN  
GERMANY**

**CE** 0483

## PRO-ACTIVE-Features

- Faster response time in the event of impending faults thanks to proactive alarms
- Data recording can be read out via USB interface using a USB stick and software
- Minimisation of temperature deviations in the interior
- Maximum storage safety thanks to harmonised components

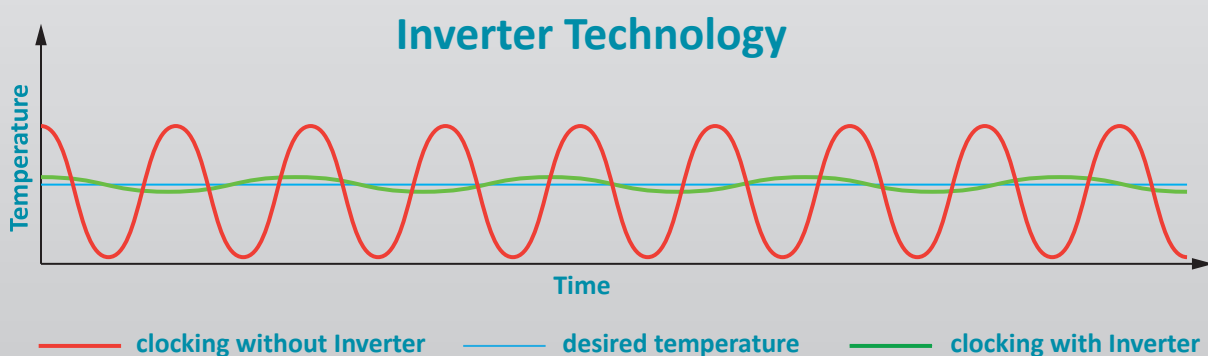


## Compressor with inverter technology

- Environmentally friendly natural refrigerant R290.  
Very low GWP value = 3 (Global Warming Potential)
- Reduction in power consumption by 31 % compared to the previous model (power consumption = 4.55 kWh/24h)
- Extended service life due to demand-orientated power adjustment
- Frequency: 50/60 Hz

If you need further support or have any questions, please contact us.

**info@kirsch-medical.de**  
**+49 (0)781 - 9227 0**



- **PRO-ACTIVE- Control:** Permanent, proactive monitoring of the performance data and alerts in the case of deviations. World's most accurate temperature control in refrigerated areas thanks to two standard PT-1000 sensors.
- **External housing** made from galvanised sheet steel (rust-proof), with white, anti-scratch powder coating. Length of the plug cable: approx. 2,8 m.
- **Adjustable feet** to compensate for uneven floors.
- **Interior** made from smooth aluminium with colourless protective coating. Gibs (every 15 mm) for flexible interior arrangement.
- **Interior** can be customised (surcharge may apply). See optional equipment.
- **Extra-thick insulation**, made from high-quality, compression-moulded and environmentally friendly material. Energy saving.
- **Self-closing door** with easy-to-replace plastic magnetic seal frame, lockable.
- **Door stop** on the right-hand side (by default, see illustration), or the left-hand side, can be retrofitted.
- **Min/max. temperature memory.**
- **Forced-air cooling**, switches off automatically when you open the door, ensures a uniform temperature and minimizes temperature deviations.
- **Automatic fast defrosting** thanks to time-limited and temperature-monitored reversal of the refrigerant circuit.
- **Condensate evaporates** in stainless steel heated dish beneath the refrigerator floor.
- **Key switch protected control panel against tampering.** Membrane keyboard with digital temperature display and minimum/maximum temperature memory.
- **Warning functions** with visual and audible alarm signal in the case of power failure and temperature deviations. Door open alarm after 60 seconds.
- **Alarms** can be forwarded using a potential-free contact (e.g., to a mobile phone with optional KIRSCH EVOLUTION CLOUD or to a control centre).
- **Data documentation** can be read via USB interface with KIRSCH Datanet software.
- **Ventilation-enforced refrigerating machine**, vibration free, hermetically sealed, energy saving, low-noise, easy to service.
- **Door frame heater** prevents icing of the door.

## Technische Details

Capacity	300 litres
Temperature setting	-32 °C
Voltage	220 – 240 V, 50 and 60 Hz
Power consumption	286 watts
Normal consumption	4.55 kWh/24 h
Admissible ambient temperature	from +10 °C to +32 °C
Heat emission (max.)	1090 watts
Exterior dimensions (including door handle and distance from wall)	w x d x h = 74 x 78 x 159 cm
Usable dimensions	w x d x h = 53 x 42 x 74 cm
Exterior dimensions with door open at 90°	w x d = 74 x 142 cm
Drawer inner dimensions	w x d x h = 53 x 42 x 10 cm
Max. load drawer	50 kg
Weight (Net/gross)	138 kg/153 kg
Temperature deviation without defrosting	+/-0.75 °C
Noise emission	51.1 dB(A)

## Optional equipment

KIRSCH refrigerators and freezers offer numerous equipment options that can be retrofitted.



### Castors

Can be equipped with steering and fixed castors.



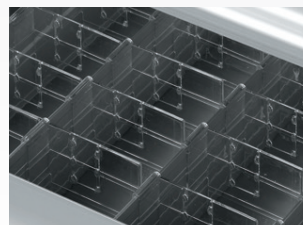
### Decorative frame

Made of stainless steel, allows to cover door with a decorative panel (thickness max. 2 mm).



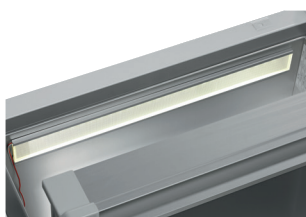
### Aluminium or stainless steel drawers on rollers

Up to four drawers are possible in total.



### Additional length and cross dividers

for the optimum organisation of your refrigerated goods.



### Interior lighting, ceiling

Optional, optimised and energy-efficient illumination of the interior via LED light strip.



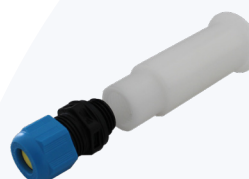
### Additional shelves

Wire shelves, robust with load capacity up to 40 and 50 kg.



### Vario support

Storage shelf on castors.



### Access port

Simple insertion of an external temperature sensor with integrated cable feed-through.



### Door coupling

Connects the furniture door to the device.



### Condensation tray

for manual draining of condensation water.

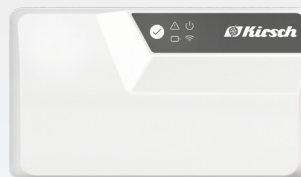


## Accessories for temperature documentation



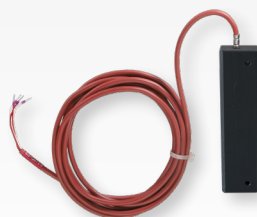
### PC-KIT-NET

Automatic temperature documentation and monitoring via your network (LAN connection).



### KIRSCH EVOLUTION CLOUD-Module

Maximum storage safety through optimal connectivity and real-time monitoring.



### External PT100/PT1000 with cold block

Additional temperature sensor for connection to existing/external monitoring system.



### Circular blade temperature recorder

Depending on the model, it is either installed in the machine compartment panel of the unit or integrated into an additional housing attachment.

\* For more information about our cloud, please contact us.



### Philipp Kirsch GmbH

Im Lossenfeld 14  
77731 Willstätt  
Germany

Phone: +49 (0) 781 9227-0  
Telefax: +49 (0) 781 9227-200  
info@kirsch-medical.com

[www.kirsch-medical.com](http://www.kirsch-medical.com)



Photograph this QR code  
and learn  
about our entire  
product range.