

## Han K4/4-M 6-16mm<sup>2</sup>

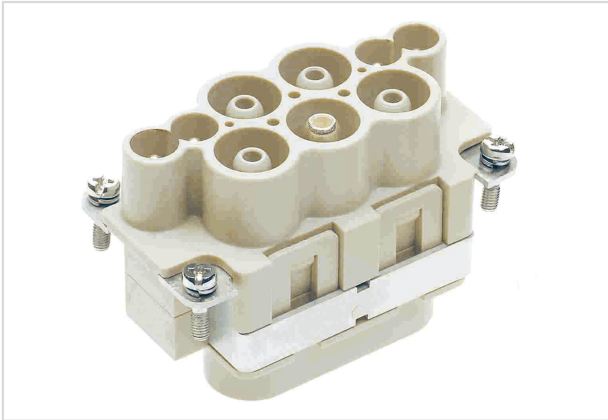


Image is for illustration purposes only. Please refer to product description.

Part number	09 38 008 2611
Specification	Han K4/4-M 6-16mm <sup>2</sup>
HARTING eCatalogue	<a href="https://b2b.harting.com/09380082611">https://b2b.harting.com/09380082611</a>

### Identification

Category	Inserts
Series	Han-Com <sup>®</sup>
Identification	Han <sup>®</sup> K 4/4

### Version

Termination method	Axial screw termination / cage-clamp termination
Gender	Male
Size	10 B
Number of contacts	8
Number of signal contacts	4
Number of power contacts	4
PE contact	Yes
Details	Not finger safe

### Technical characteristics

Conductor cross-section	6 ... 16 mm <sup>2</sup> 0.14 ... 2.5 mm <sup>2</sup> Signal
Wire outer diameter	≤8.9 mm
Rated current	63 A
Rated voltage	690 V
Rated impulse voltage	8 kV
Pollution degree	3
Rated current (signal)	16 A



Pushing Performance  
 Since 1945

## Technical characteristics

Rated voltage (signal)	250 V
Rated impulse voltage (signal)	4 kV
Pollution degree (signal)	3
Rated current acc. to UL	63 A
Rated voltage acc. to UL	600 V
Rated current acc. to UL (signal)	16 A
Rated voltage acc. to UL (signal)	230 V
Rated current acc. to CSA	63 A
Rated voltage acc. to CSA	600 V
Rated current acc. to CSA (signal)	16 A
Rated voltage acc. to CSA (signal)	230 V
Insulation resistance	>10 <sup>10</sup> Ω
Contact resistance	≤0.5 mΩ
Contact resistance, signal area	≤3 mΩ
Stripping length	11 ... 12 mm 7 ... 9 mm Signal
Tightening torque	2 Nm @ 6 mm <sup>2</sup> 3 Nm @ 10 mm <sup>2</sup> 4 Nm @ 16 mm <sup>2</sup>
Limiting temperature	-40 ... +125 °C
Mating cycles	≥500

## Material properties

Material (insert)	Polycarbonate (PC)
Colour (insert)	RAL 7032 (pebble grey)
Material (contacts)	Copper alloy
Surface (contacts)	Silver plated
Material flammability class acc. to UL 94	V-0
RoHS	compliant with exemption
RoHS exemptions	6(a) / 6(a)-I: Lead as an alloying element in steel for machining purposes and in galvanised steel containing up to 0,35 % lead by weight / Lead as an alloying element in steel for machining purposes containing up to 0,35 % lead by weight and in batch hot dip galvanised steel components containing up to 0,2 % lead by weight 6(c): Copper alloy containing up to 4 % lead by weight
ELV status	compliant with exemption
China RoHS	50



Pushing Performance  
Since 1945

## Material properties

REACH Annex XVII substances	Not contained
REACH ANNEX XIV substances	Not contained
REACH SVHC substances	Yes
REACH SVHC substances	Potassium 1,1,2,2,3,3,4,4,4-nonafluorobutane-1-sulphonate Lead
ECHA SCIP number	1e38d35d-d1be-4585-8e03-95faccd739bf
California Proposition 65 substances	Yes
California Proposition 65 substances	Lead Nickel
Fire protection on railway vehicles	EN 45545-2 (2020-08)
Requirement set with Hazard Levels	R22 (HL 1-3) R23 (HL 1-3)

## Specifications and approvals

Specifications	IEC 60664-1 IEC 61984
Approvals	DNV GL
UL / CSA	UL 1977 ECBT2.E235076 CSA-C22.2 No. 182.3 ECBT8.E235076

## Commercial data

Packaging size	1
Net weight	122.4 g
Country of origin	Romania
European customs tariff number	85366990
GTIN	5713140056282
eCl@ss	27440205 Contact insert for industrial connectors