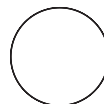


# WL400



Terminal max.:  
~240V / 10A  
0,75 - 2,5 mm<sup>2</sup>

Model	Voltage	Wattage	CCT	W / Ø (mm)	H (mm)
WL400	220-240V	38/29W	3000K / 4000K	400	63

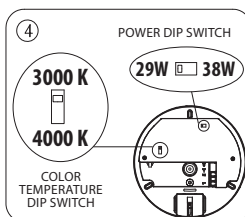
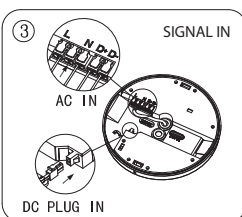
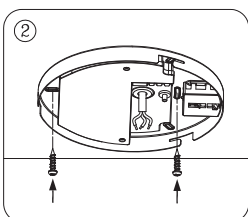
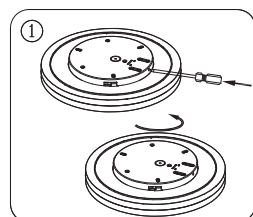
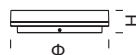


IEC/EN60598-1  
EN61547

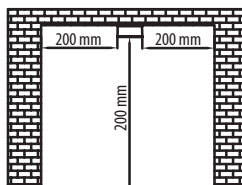
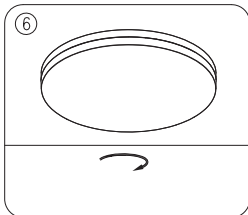
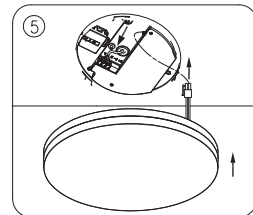
IEC/EN60598-2-1  
EN61000-3-1

EN62471:2008  
EN61000-3-2

EN55015



\* DALI clamp only available in DALI version of WL400



## Montageanleitung

- Folgen Sie dieser Montageanleitung um die korrekte Installation der Leuchte sicherzustellen.
- Bewahren Sie die Anleitung für zukünftige Fragen auf. Alle Arbeiten an dem Produkt sind im spannungsfreien Zustand durchzuführen.
- Der elektrische Anschluss ist nur von einer qualifizierten Elektrofachkraft durchzuführen.

## Installation instruction

- Always follow this instruction to ensure correct and safe installation and functioning of the luminaire and keep it for future reference.
- Always isolate the power before commencing installation.
- If in doubt, consult a qualified electrician. Ensure that you always install the luminaire to the relevant regulations.