

## Han 16 A-asg1-LB-K-21

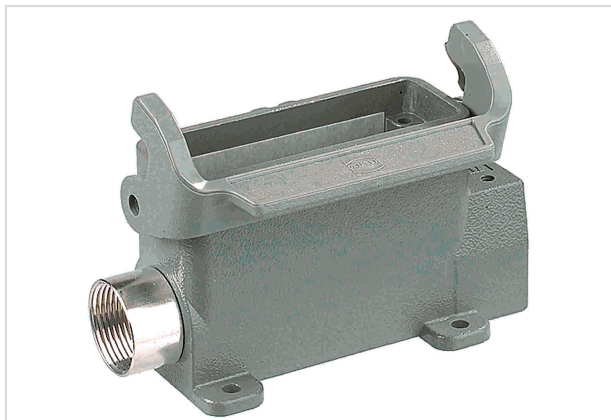


Image is for illustration purposes only. Please refer to product description.

Part number	09 20 016 0222
Specification	Han 16 A-asg1-LB-K-21
HARTING eCatalogue	<a href="https://b2b.harting.com/09200160222">https://b2b.harting.com/09200160222</a>

### Identification

Category	Hoods/Housings
Series of hoods/housings	Han A <sup>®</sup>
Type of hood/housing	Surface mounted housing
Description of hood/housing	With thermo-plastic cover
Type	Low construction

### Version

Size	16 A
Version	Side entry
Cable entry	1x Pg 21
Locking type	Single locking lever
Han-Easy Lock <sup>®</sup>	Yes
Field of application	Standard Hoods/housings for industrial applications

### Technical characteristics

Limiting temperature	-40 ... +125 °C
Degree of protection acc. to IEC 60529	IP65
Type rating acc. to UL 50 / UL 50E	4 4X 12

### Material properties

Material (hood/housing)	Aluminium die-cast
Surface (hood/housing)	Powder-coated



**Pushing Performance**  
Since 1945

## Material properties

Colour (hood/housing)	RAL 7037 (dust grey)
Material (locking)	Polycarbonate (PC) Stainless steel
Colour (locking)	RAL 7037 (dust grey)
Material flammability class acc. to UL 94 (locking levers)	V-0
RoHS	compliant
ELV status	compliant
China RoHS	e
REACH Annex XVII substances	Not contained
REACH ANNEX XIV substances	Not contained
REACH SVHC substances	Yes
REACH SVHC substances	6,6'-di-tert-butyl-2,2'-methylenedi-p-cresol Potassium 1,1,2,2,3,3,4,4,4-nonafluorobutane-1-sulphonate
California Proposition 65 substances	Yes
California Proposition 65 substances	Nickel Naphthalene
Fire protection on railway vehicles	EN 45545-2 (2020-08)
Requirement set with Hazard Levels	R1 (HL 1-3) R7 (HL 1-3)

## Specifications and approvals

Approvals	DNV GL
UL / CSA	UL 1977 ECBT2.E235076 CSA-C22.2 No. 182.3 ECBT8.E235076
CE	Yes

## Commercial data

Packaging size	1
Net weight	204.2 g
Country of origin	Germany
European customs tariff number	85389099
GTIN	5713140039599
eCl@ss	27440202 Shell for industrial connectors