

Han-Yellock module M-c, blue

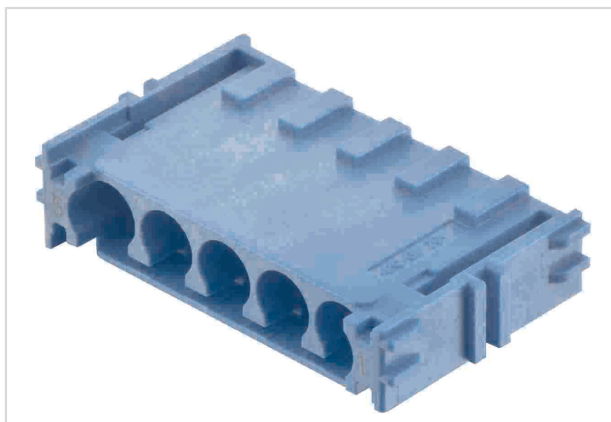


Image is for illustration purposes only. Please refer to product description.

Part number	11 05 105 3011
Specification	Han-Yellock module M-c, blue
HARTING eCatalogue	https://b2b.harting.com/11051053011

Identification

Category	Inserts
Series	Han-Yellock®
Element	Module

Version

Termination method	Crimp termination
Gender	Male
Number of contacts	5

Technical characteristics

Conductor cross-section	0.14 ... 4 mm ²
Rated current	20 A
Rated voltage	500 V
Rated impulse voltage	6 kV
Pollution degree	3
Insulation resistance	>10 ¹⁰ Ω
Contact resistance	≤2 mΩ
Limiting temperature	-40 ... +125 °C
Mating cycles	≥500

Material properties

Material (insert)	Polycarbonate (PC)
Colour (insert)	RAL 5015 (sky blue)



Pushing Performance
Since 1945

Material properties

Material (contacts)	Copper alloy
Surface (contacts)	Silver plated
Material flammability class acc. to UL 94	V-0
RoHS	compliant
ELV status	compliant
China RoHS	e
REACH Annex XVII substances	Not contained
REACH ANNEX XIV substances	Not contained
REACH SVHC substances	Not contained
Fire protection on railway vehicles	EN 45545-2 (2020-08)
Requirement set with Hazard Levels	R22 (HL 1-3) R23 (HL 1-3)

Specifications and approvals

Specifications	IEC 60664-1 IEC 61984
Approvals	DNV GL

Commercial data

Packaging size	2
Net weight	4.94 g
Country of origin	Germany
European customs tariff number	85389099
GTIN	5713140109766
eCl@ss	27440205 Contact insert for industrial connectors