

Han 6Ex-F-s

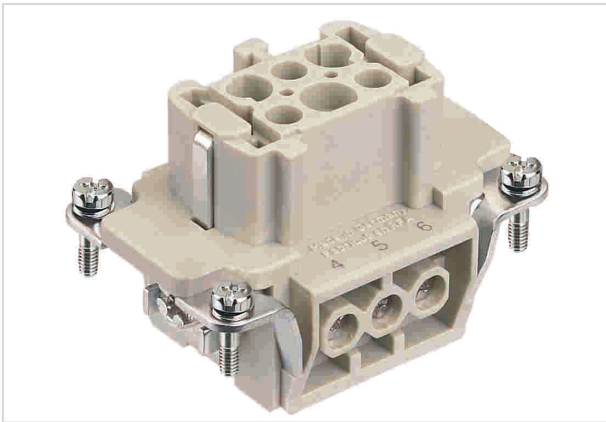


Image is for illustration purposes only. Please refer to product description.

Part number	09 36 006 2701
Specification	Han 6Ex-F-s
HARTING eCatalogue	https://b2b.harting.com/09360062701

Identification

Category	Inserts
Series	Han [®] Ex

Version

Termination method	Screw termination
Gender	Female
Size	6 B
Number of contacts	6
PE contact	Yes
Details	ATTENTION! Only to be used with Han [®] Ex hoods and housings!

Technical characteristics

Conductor cross-section	0.75 ... 2.5 mm ²
Rated current	16 A
Rated voltage	90 V
Insulation resistance	>10 ¹⁰ Ω
Contact resistance	≤1 mΩ
Tightening torque	0.5 Nm
Limiting temperature	-20 ... +40 °C
Mating cycles	≥500

Material properties

Material (insert)	Polycarbonate (PC)
-------------------	--------------------



Pushing Performance
Since 1945

Material properties

Colour (insert)	RAL 7032 (pebble grey)
Material (contacts)	Copper alloy
Surface (contacts)	Silver plated
Material flammability class acc. to UL 94	V-0
RoHS	compliant with exemption
RoHS exemptions	6(c): Copper alloy containing up to 4 % lead by weight
ELV status	compliant with exemption
China RoHS	50
REACH Annex XVII substances	Not contained
REACH ANNEX XIV substances	Not contained
REACH SVHC substances	Yes
REACH SVHC substances	Lead
ECHA SCIP number	60b1a572-bb3f-476f-9307-b7d1688bd90c
California Proposition 65 substances	Yes
California Proposition 65 substances	Lead Nickel
Fire protection on railway vehicles	EN 45545-2 (2020-08)
Requirement set with Hazard Levels	R22 (HL 1-3) R23 (HL 1-3)

Commercial data

Packaging size	1
Net weight	50.7 g
Country of origin	Germany
European customs tariff number	85366990
GTIN	5713140054806
eCl@ss	27440205 Contact insert for industrial connectors