

Han 24Ex UL-M-s

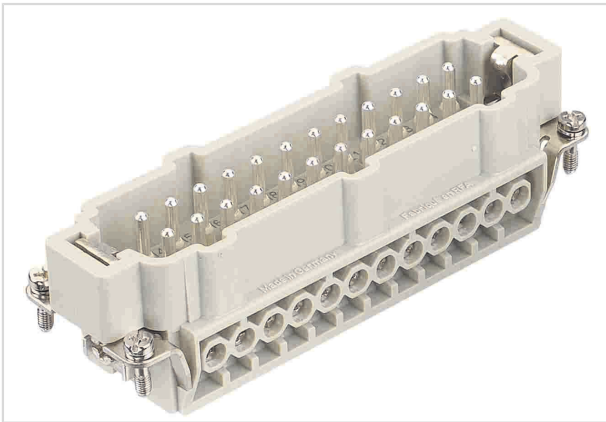


Image is for illustration purposes only. Please refer to product description.

Part number	09 36 524 2601
Specification	Han 24Ex UL-M-s
HARTING eCatalogue	https://b2b.harting.com/09365242601

Identification

Category	Inserts
Series	Han [®] Ex

Version

Termination method	Screw termination
Gender	Male
Size	24 B
Number of contacts	24
PE contact	Yes
Details	for US purposes only
Details	ATTENTION! Only to be used with Han [®] Ex hoods and housings!

Technical characteristics

Conductor cross-section	0.75 ... 2.5 mm ²
Rated current	16 A
Rated voltage	90 V
Insulation resistance	>10 ¹⁰ Ω
Contact resistance	≤1 mΩ
Tightening torque	0.5 Nm
Limiting temperature	-20 ... +40 °C
Mating cycles	≥500



Pushing Performance
Since 1945

Material properties

Material (insert)	Polycarbonate (PC)
Colour (insert)	RAL 7032 (pebble grey)
Material (contacts)	Copper alloy
Surface (contacts)	Silver plated
Material flammability class acc. to UL 94	V-0
RoHS	compliant with exemption
RoHS exemptions	6(c): Copper alloy containing up to 4 % lead by weight
ELV status	compliant with exemption
China RoHS	50
REACH Annex XVII substances	Not contained
REACH ANNEX XIV substances	Not contained
REACH SVHC substances	Yes
REACH SVHC substances	Lead
California Proposition 65 substances	Yes
California Proposition 65 substances	Lead Nickel

Specifications and approvals

UL / CSA	UL CYJX2.E482115 CSA-C22.2 No. 213 CYJX8.E482115
----------	---

Commercial data

Packaging size	1
Net weight	115 g
Country of origin	Germany
European customs tariff number	85366990
GTIN	5713140186941
eCl@ss	27440205 Contact insert for industrial connectors