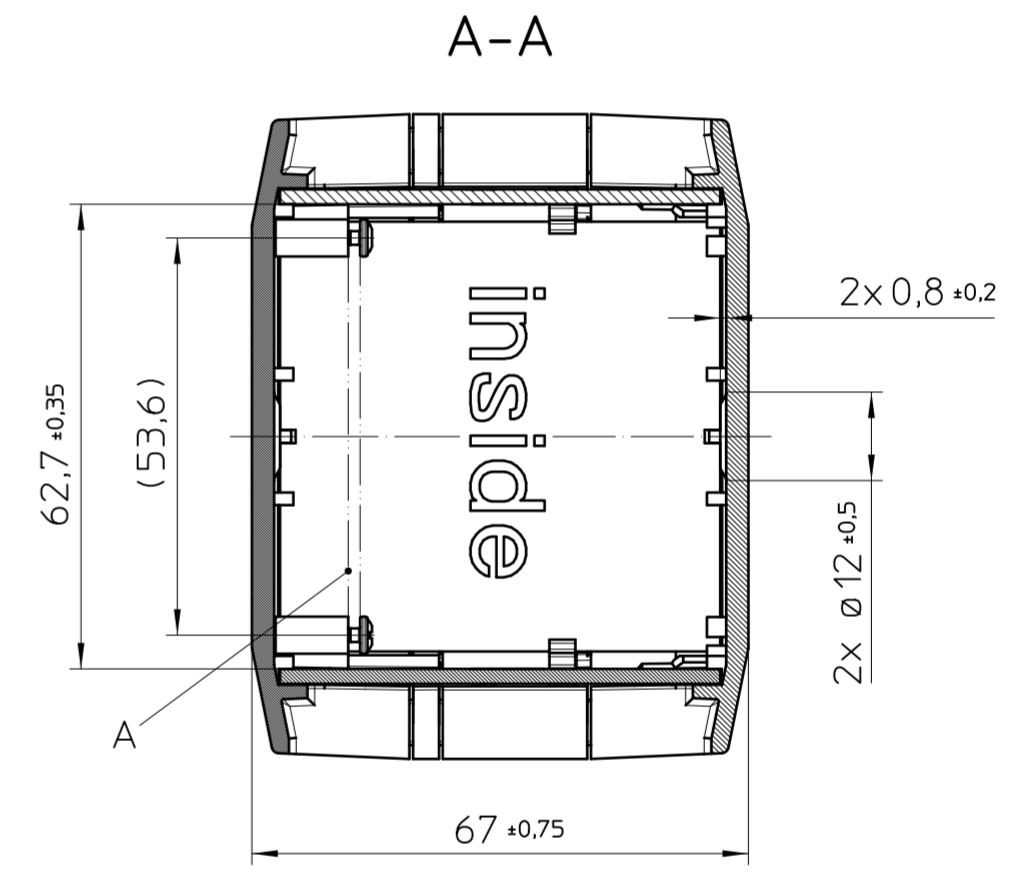
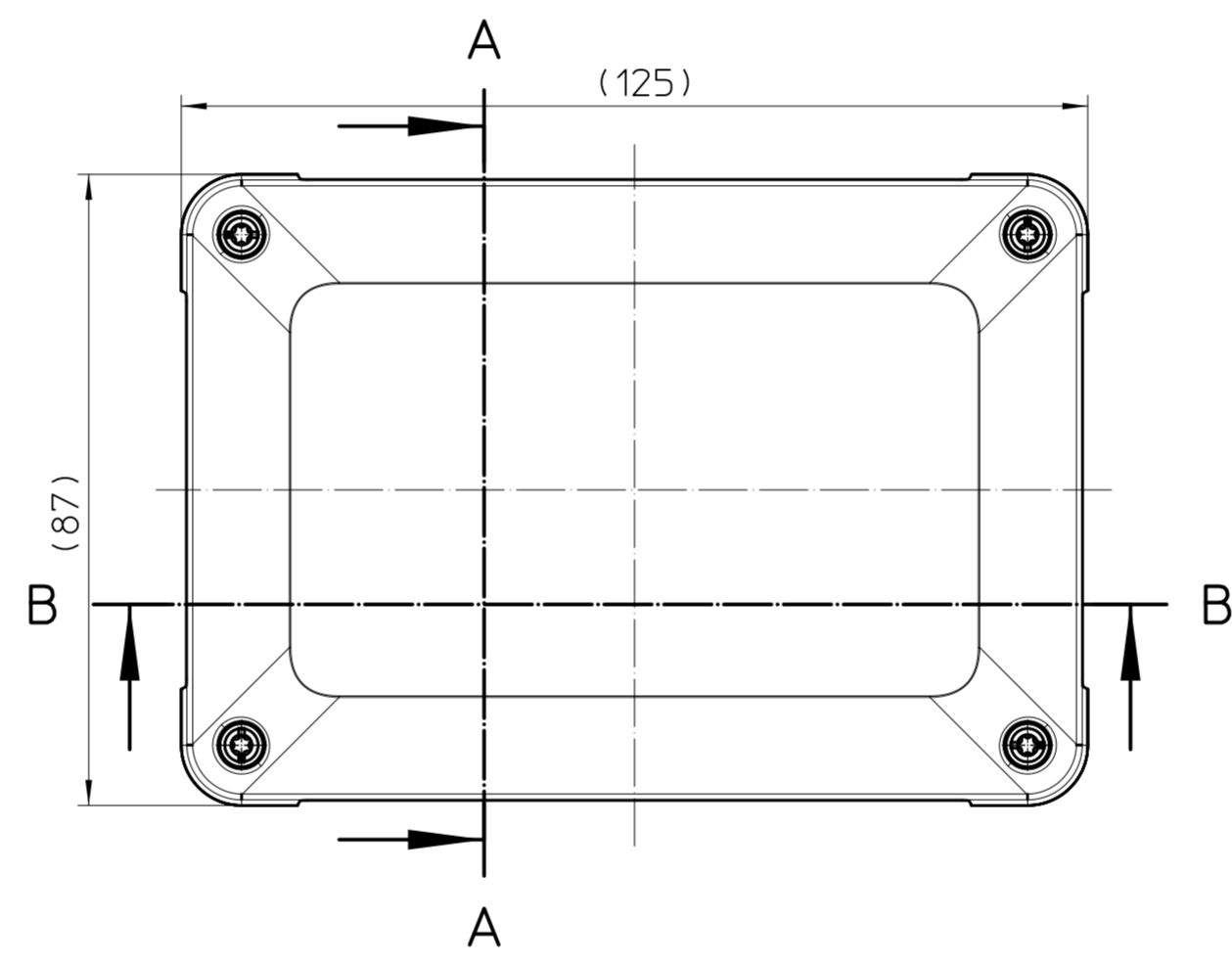
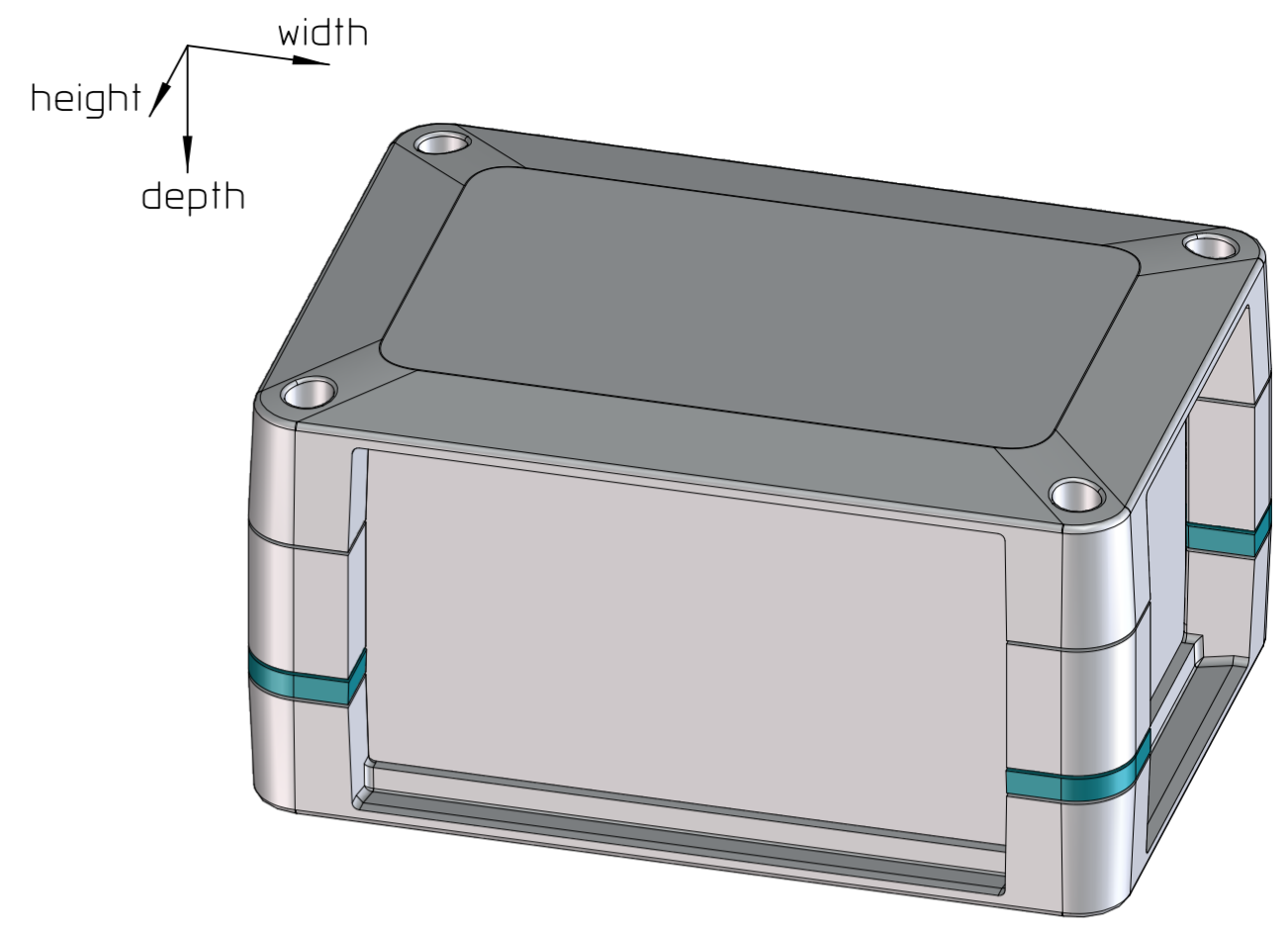
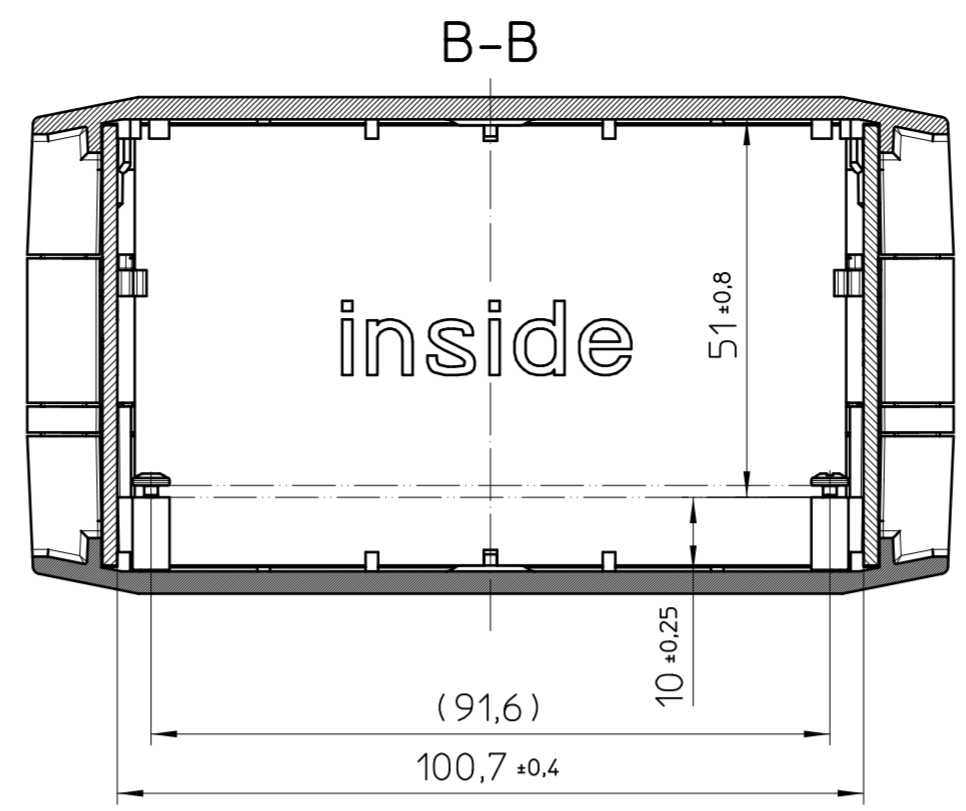
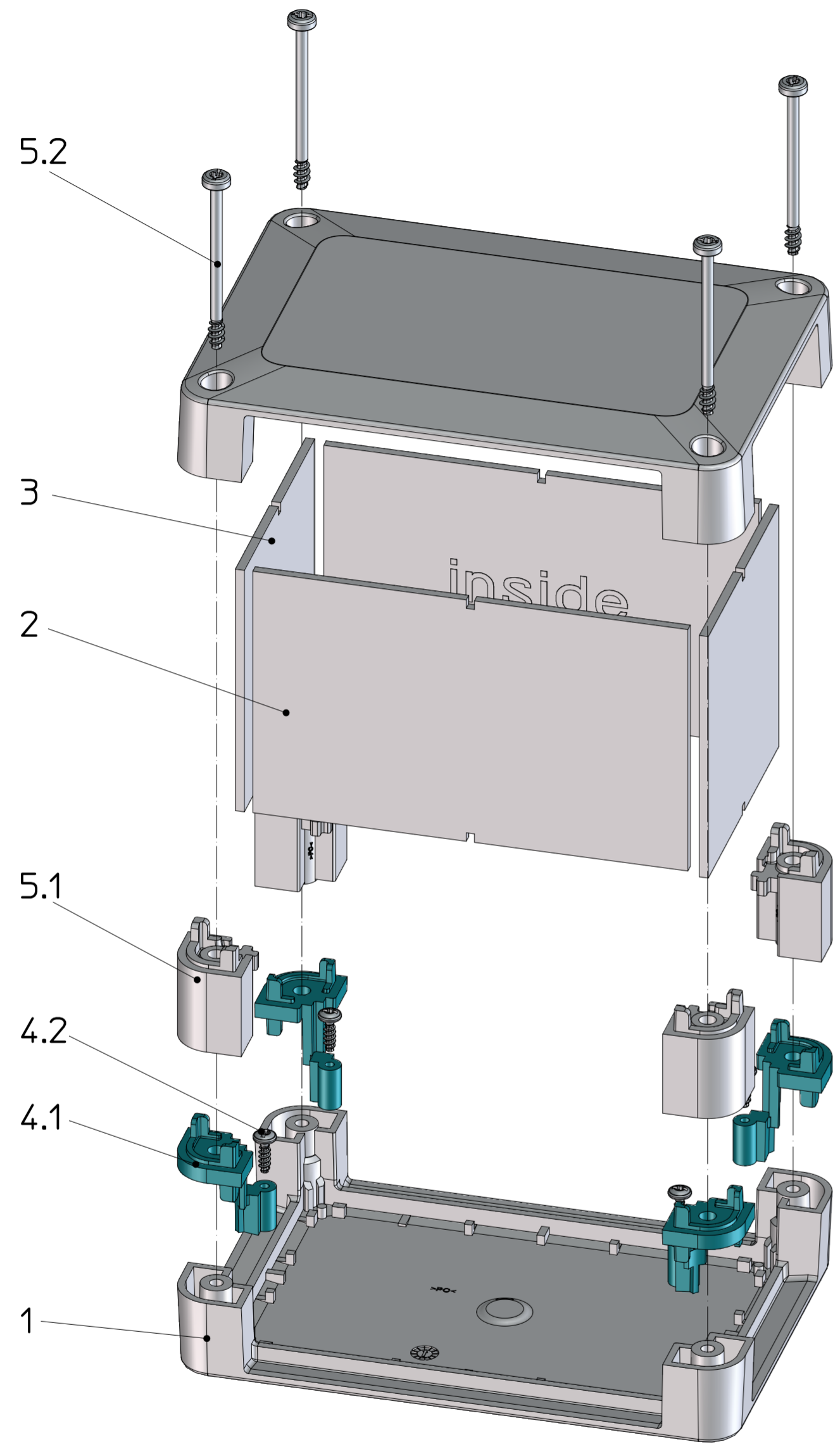


Weitergabe sowie Vervielfältigung dieses Dokuments, Verwertung und Mitteilung seines Inhalts sind verboten, soweit nicht ausdrücklich gestattet. Zuwiderhandlungen verpflichten zu Schadensersatz. Alle Rechte für den Fall der Patent-, Gebrauchsmuster- oder Designeintragung vorbehalten. Bauartbedingtes Spiel ist in den Toleranzangaben nicht berücksichtigt.

1 2 3 4 5 6 7 8



General Information:

- Simplified representation, exemplary shown in gray and for Corner Connector Dome (4.1) turquoise
- Tolerances apply in a normal climate according to DIN EN ISO 291-23/50-2, PA plastic parts with about 2% (% by weight) moisture content.
- Web: [www.phoenixcontact.com](http://www.phoenixcontact.com) webcode: #0853

Additional Information:

A. PCB t=0,8-3mm  
 B. PCB area free option for customer  
 max. PCB surface = 100mmx62mm

1) for this application not needed and represented

KIT (not mounted)			
Pos.	QTY	Description	Item number
1	2	HALF HOUSING 125-87	2203349
2	2	SIDE WALL 125 HIGH	2203367
3	2	SIDE WALL 87 HIGH	2203361
4	1	CORNER CONNECTOR DOME KIT	2203404
4.1	4	CORNER CONNECTOR DOME	
4.2	4	SCREW PT 2,5X8 TORX	
4.3	4	SCREW PT 3,5X20 TORX <sup>1)</sup>	
5	1	HEIGHT ADAPTER CORNER KIT	2203399
5.1	4	HEIGHT ADAPTER CORNER	
5.2	4	SCREW PT 3,5X40 TORX	

<sup>1)</sup> DIN A2

document-no. / ri	article-no.	scale	- Simplified representation - Document excluded - from change process - Linear dimensions (mm)
01025492 / 03	2203445	1:1	
date	document-type	description	
19.06.2023	TECDOC_2D_Productdrawing	UCS 125-87-H-CCD 7035	

page 1 of 1

1 2 3 4 5 6 7 8