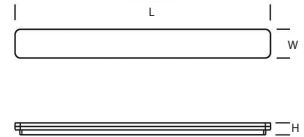


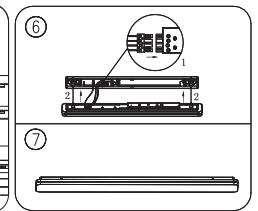
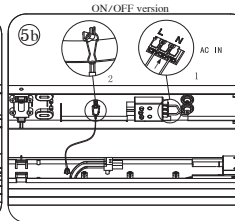
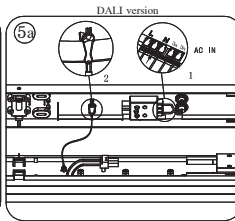
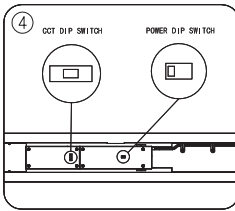
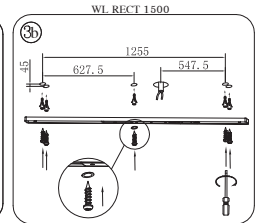
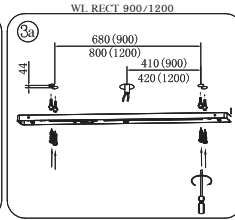
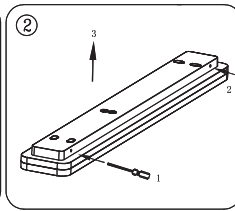
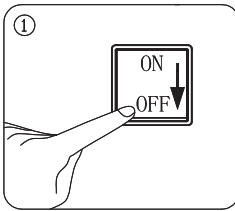


Terminal max.:
~240V / 10A
0,75 - 2,5 mm²

Modell	Voltage	Wattage	CCT	L (mm)	W (mm)	H (mm)
WL RECT 900	220V - 240V	24W / 31W	3000K / 4000K	900	130	55
WL RECT 1200	220V - 240V	28W / 37W	3000K / 4000K	1200	130	55
WL RECT 1500	220V - 240V	27W / 36W / 48W	3000K / 4000K	1500	130	55



IEC/EN60598-1 IEC/EN60598-2-1 EN62471:2008 EN55015 EN61547 EN61000-3-1 EN61000-3-2



7

Montageanleitung

- Folgen Sie dieser Montageanleitung um die korrekte Installation der Leuchte sicherzustellen.
- Bewahren Sie die Anleitung für zukünftige Fragen auf. Alle Arbeiten an dem Produkt sind im spannungsfreien Zustand durchzuführen.
- Der elektrische Anschluss ist nur von einer qualifizierten Elektrofachkraft durchzuführen.

Installation instruction

- Always follow this instruction to ensure correct and safe installation and functioning of the luminaire and keep it for future reference.
- Always isolate the power before commencing installation.
- If in doubt, consult a qualified electrician. Ensure that you always install the luminaire to the relevant regulations.