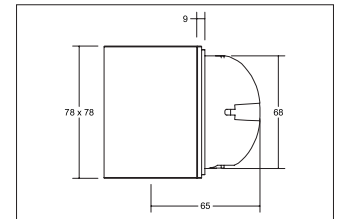
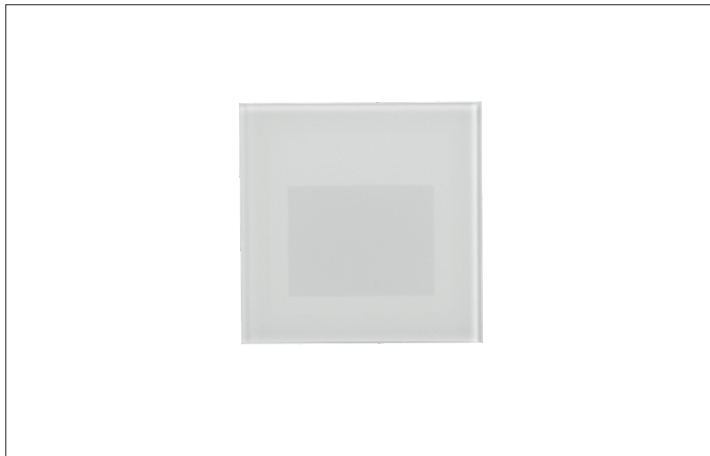


LED wall recessed light WALL KIT68, for device socket

**Artikel-Nr. 10159073**

LED wall recessed light WALL KIT68, for device socket, white, square. Recessed mounting, Wall-mounted. For installation in cavity wall or concrete device boxes with an installation depth of at least 62 mm (screw distance: 60 mm). Compatible with Kaiser device sockets for cavity wall installation, product no. 9064-02 or 9464-02 or concrete installation, product no. 1556-04. Attention! The delivery is WITHOUT a device socket. Mounting method: Recessed mounting, Place of installation: Wall-mounted, Material: Aluminium / Steel / Glass/ Plastic, Degree of protection: according to DIN EN 60529 IP20, Protection class: (EN 61140) I, Voltage: 230V AC 50Hz, Power: 1.5W, Amount of light sources / fittings: 1.0 Qty, Luminous flux: 35lm, Colour temperature: 3.000 K, Light colour : White, With control gear: Yes, Control: on/off.

**Artikel-Nr.** 10159073  
**Stand:** 07.12.2021 20:01

Colour temperature	3000 K
Luminous flux	35 lm
Amount of light sources / fittings	1 Qty
Material	Aluminium / Steel / Glass/ Plastic
Power	1,5 W
Lamp	LED
scope of delivery	With cover glass
Colour rendering	CRI > 90
Control	on/off
Built-in diameter	68 mm

Installation depth	65 mm
Voltage	230V AC 50Hz
Circuit type	Parallel conduction
Degree of protection	IP20
Protection class	I
Voltage type	AC
Length	78 mm
Width	78 mm
Aufbauhöhe	50 mm
Dimensions	D 78 x H 50 mm