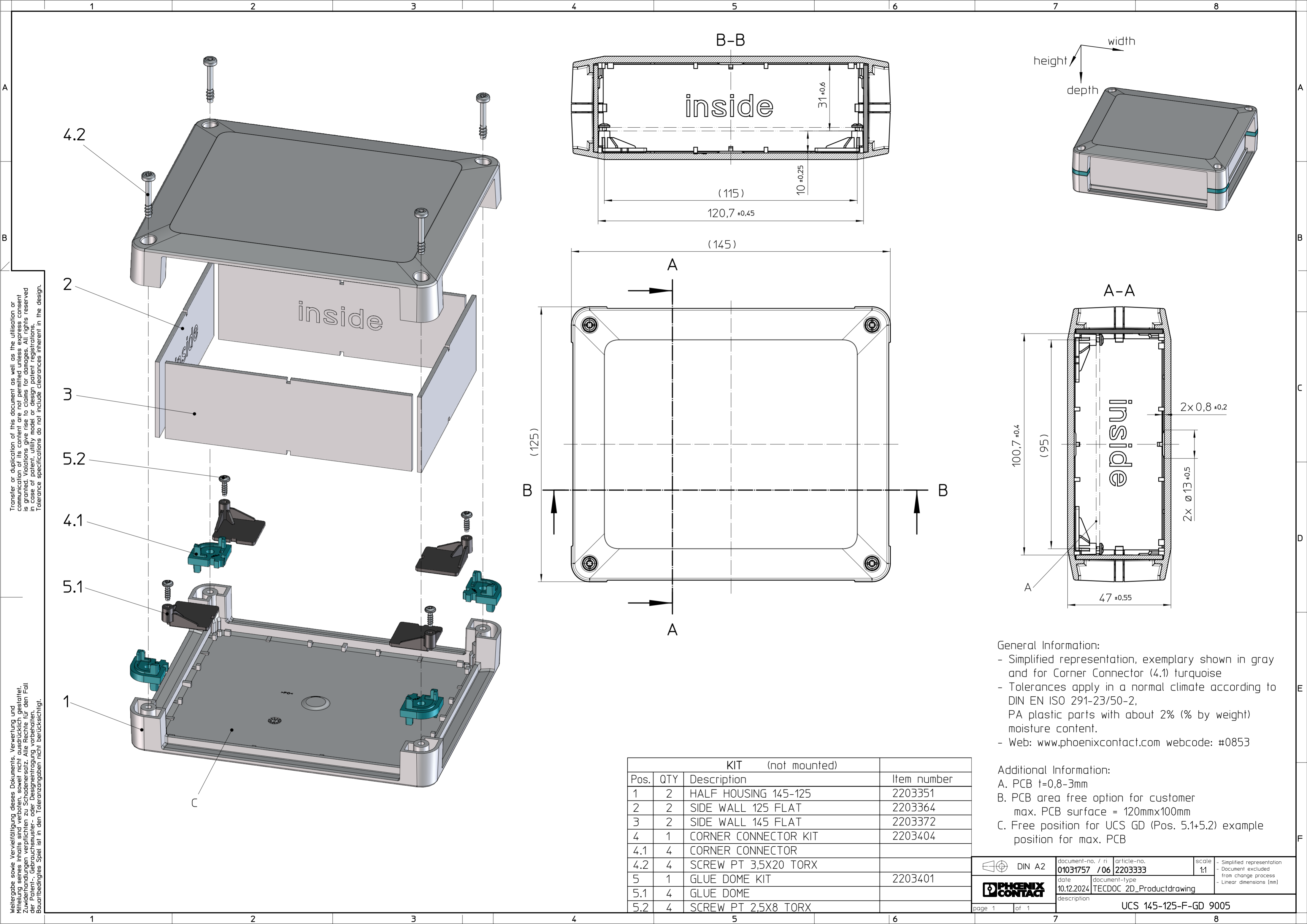


Weitergabe sowie Vervielfältigung dieses Dokuments, Verwertung und Mitteilung seines Inhalts sind verboten, soweit nicht ausdrücklich gestattet. Zuwiderhandlungen verpflichten zu Schadensersatz. Alle Rechte für den Fall der Patent-, Gebrauchsmuster- oder Designeintragung vorbehalten. Bauabfertigungsspiel ist in den Toleranzangaben nicht berücksichtigt.



General Information:

- Simplified representation, exemplary shown in gray and for Corner Connector (4.1) turquoise
- Tolerances apply in a normal climate according to DIN EN ISO 291-23/50-2, PA plastic parts with about 2% (% by weight) moisture content.
- Web: www.phoenixcontact.com webcode: #0853

Additional Information:

- A. PCB t=0,8-3mm
- B. PCB area free option for customer
max. PCB surface = 120mmx100mm
- C. Free position for UCS GD (Pos. 5.1+5.2) example position for max. PCB

| KIT (not mounted) | | | |
|-------------------|-----|----------------------|-------------|
| Pos. | QTY | Description | Item number |
| 1 | 2 | HALF HOUSING 145-125 | 2203351 |
| 2 | 2 | SIDE WALL 125 FLAT | 2203364 |
| 3 | 2 | SIDE WALL 145 FLAT | 2203372 |
| 4 | 1 | CORNER CONNECTOR KIT | 2203404 |
| 4.1 | 4 | CORNER CONNECTOR | |
| 4.2 | 4 | SCREW PT 3,5X20 TORX | |
| 5 | 1 | GLUE DOME KIT | 2203401 |
| 5.1 | 4 | GLUE DOME | |
| 5.2 | 4 | SCREW PT 2,5X8 TORX | |

| | | | | |
|--------|-------------------|---------------------------|--------------------------------------|--|
| | document-no. / ri | article-no. | scale | - Simplified representation - Document excluded from change process - Linear dimensions (mm) |
| | 01031757 / 06 | 2203333 | 1:1 | |
| | date | document-type | description UCS 145-125-F-GD 9005 | |
| | 10.12.2024 | TECDCOC_2D_Productdrawing | | |
| page 1 | of 1 | | | |