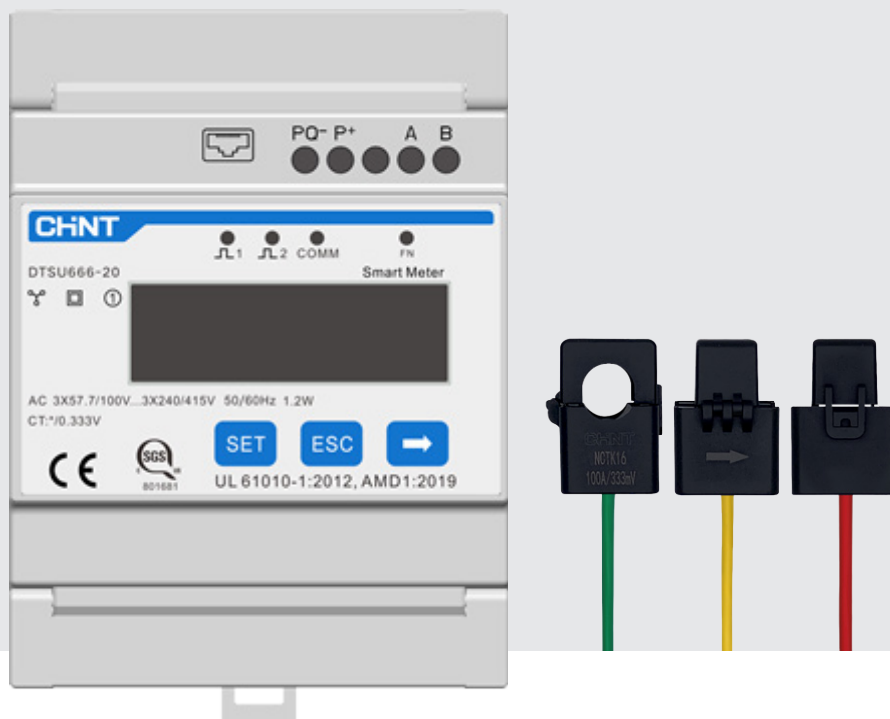


DTSU666-20

Accessories



| Technical parameters | DTSU666-20 |
|------------------------------------|---|
| Input | |
| Rated voltage | 230 Vac L-N / 400 Vac L-L |
| AC voltage range | 50 ~ 280 Vac L-N / 85 ~ 485 Vac L-L |
| Measurement range | CT: 0 ~100 A or 0 ~ 250 A, Rogwski coil: 0~1000 A or 0~3000 A |
| Accuracy class | 1 * |
| Power consumption | ≤ 1.5 W (6 VA) |
| CTs available input no. | 6 |
| Communication | |
| Serial port | RS485 * 1, 9600 bps |
| Protection and data storage | |
| Insulation resistance | > 100MΩ |
| Overvoltage category | III |
| Data storage time | 10 Years |
| Ambient conditions | |
| Operating temperature | -25 °C ~ 70 °C |
| Relative air humidity | ≤ 75 % (non-condensing) |
| Max. operating altitude | ≤ 2000 m |
| Protection class | IP20 |
| Mechanical parameters | |
| Dimensions (W x H x D) | 72 mm × 118 mm × 65.5 mm |
| Weight | 800 g |
| AC connection | 1 - 6 mm ² |
| Comm. connection | 0.2 - 1 mm ² |
| Mounting type | 35 mm Din-rail mounting |
| Certificate compliance | EN61326-1, EN61010-1 |

| Technical parameters | CT |
|---------------------------|--|
| CT** specification | |
| CT type | Split Core |
| Max. input current | 100 A or 250 A |
| Output voltage | 333 mV |
| Cable lengths | 6 m |
| CT model | ZTY6.176.532 for 100 A, ZTY6.176.533 for 250 A |

* Measurement accuracy is determined by installation if use Rogwski coil.

** CTs need to be ordered separately, while for certain types of inverters, CTs are provided by default, please refer to inverters manual for details.

