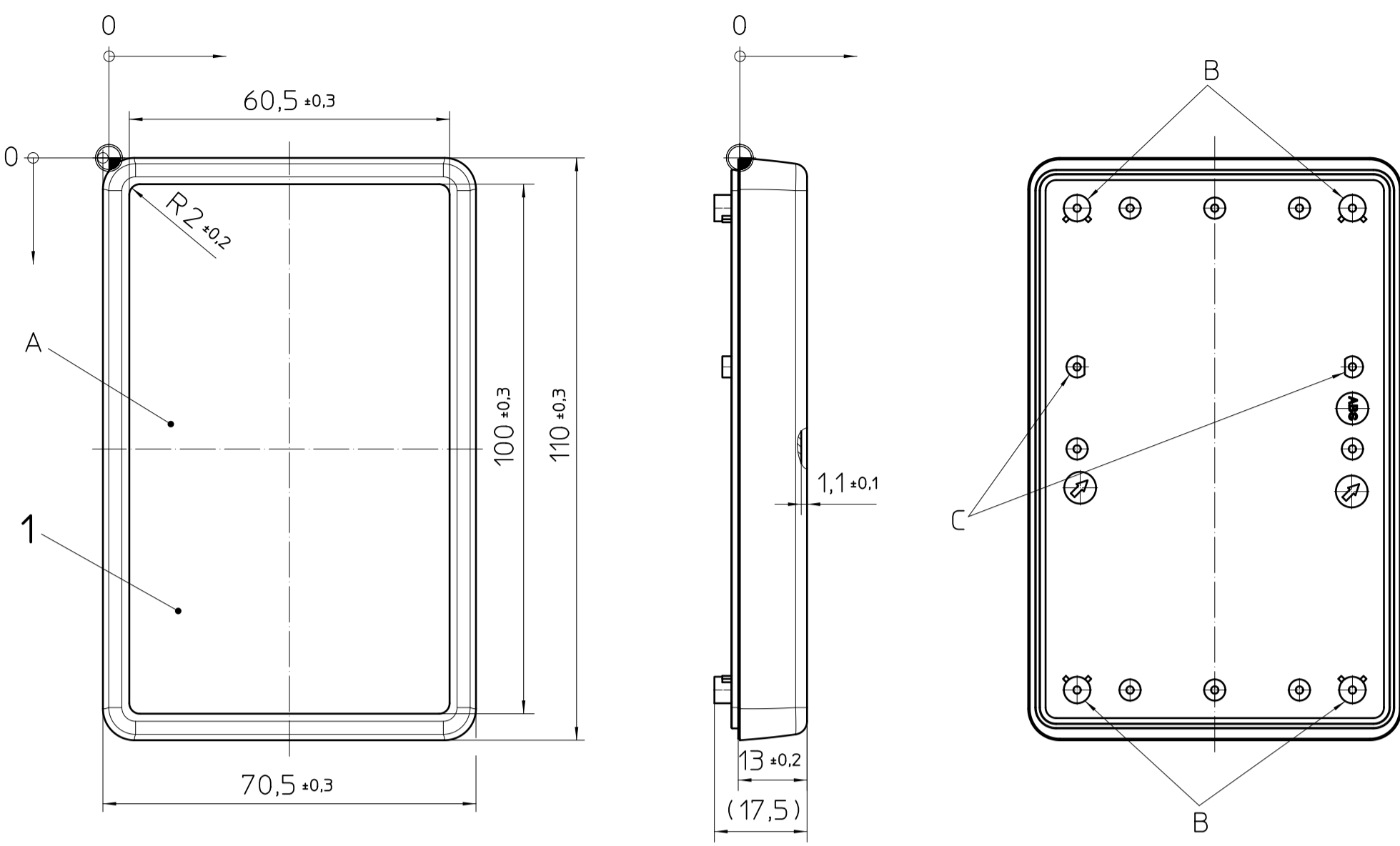
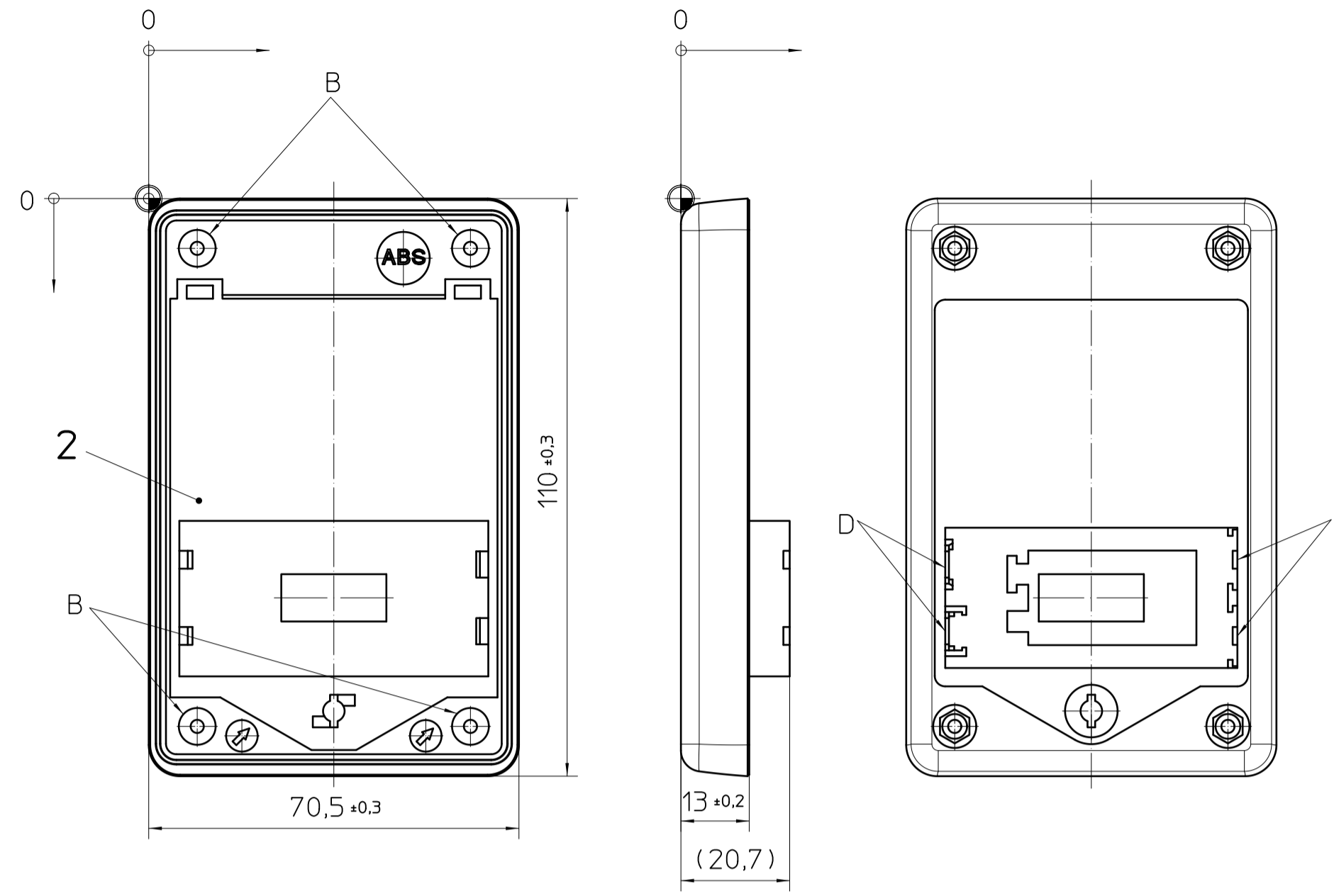


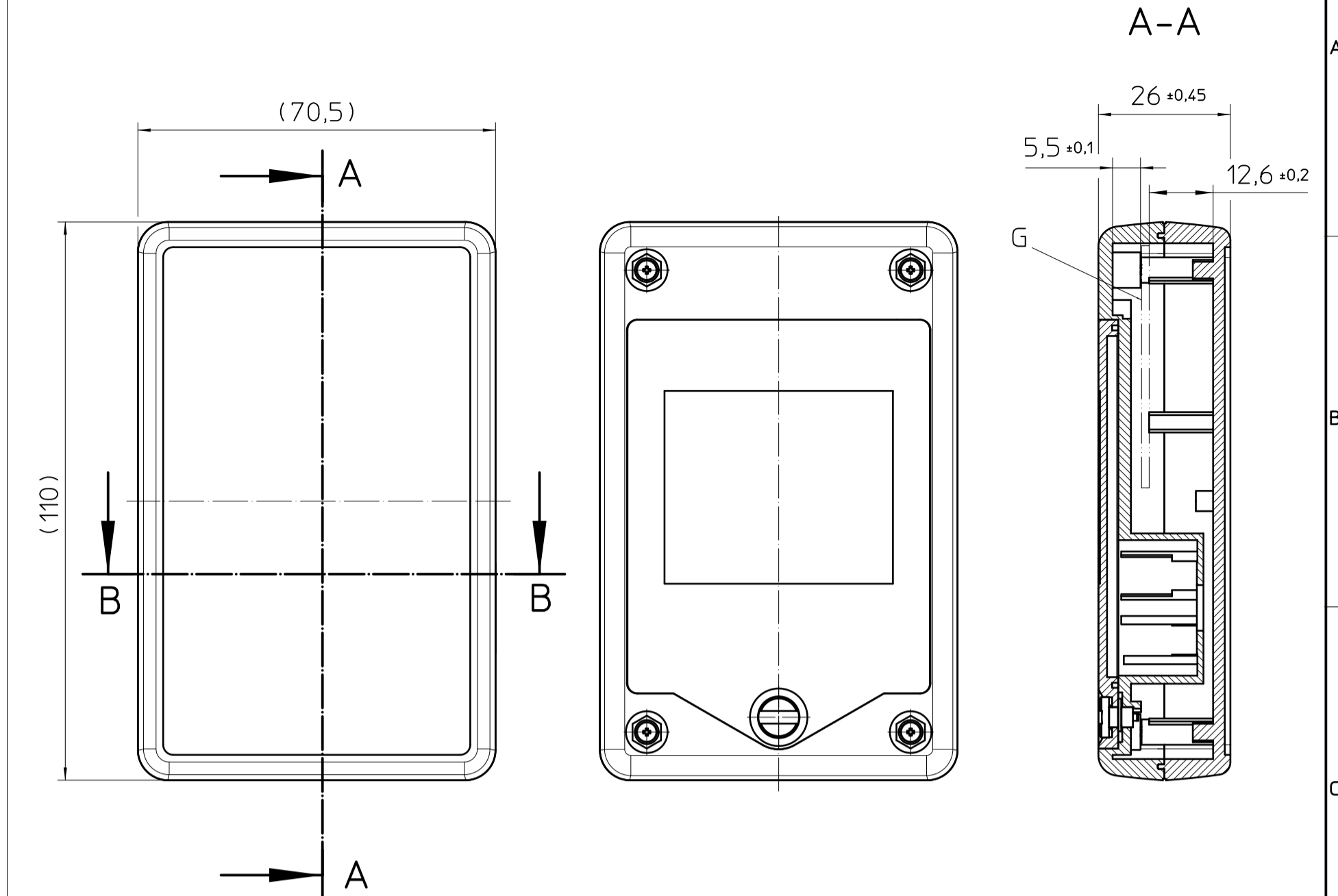
HOUSING FRONT



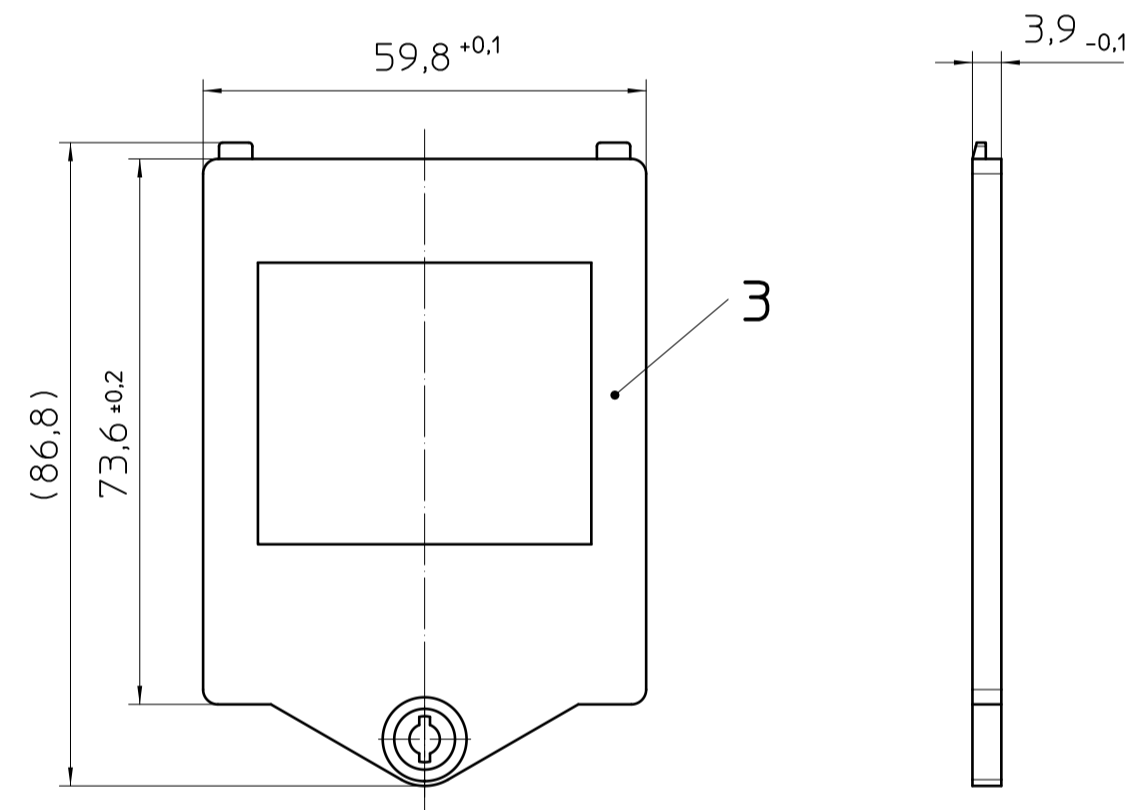
HOUSING REAR



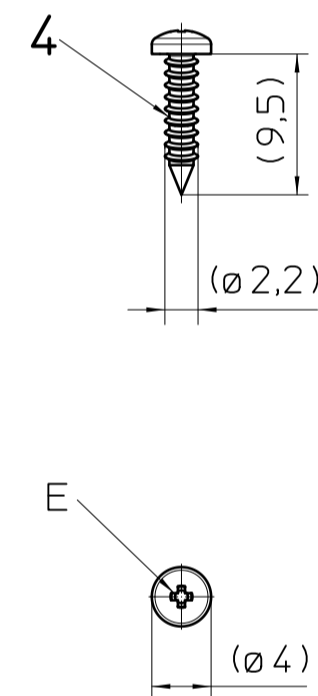
Assembly example HCS-C MINI 1 9V C C



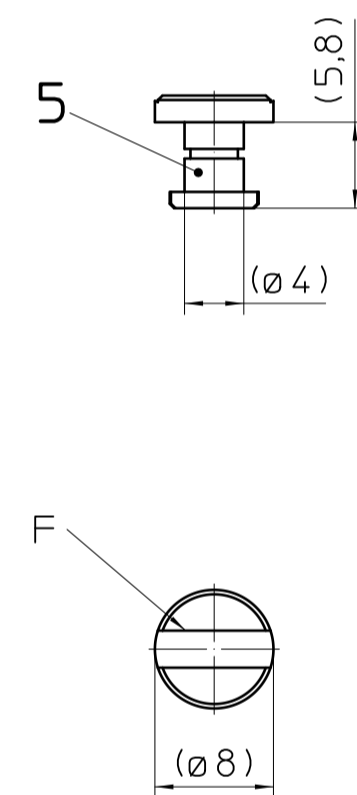
BATTERY COVER



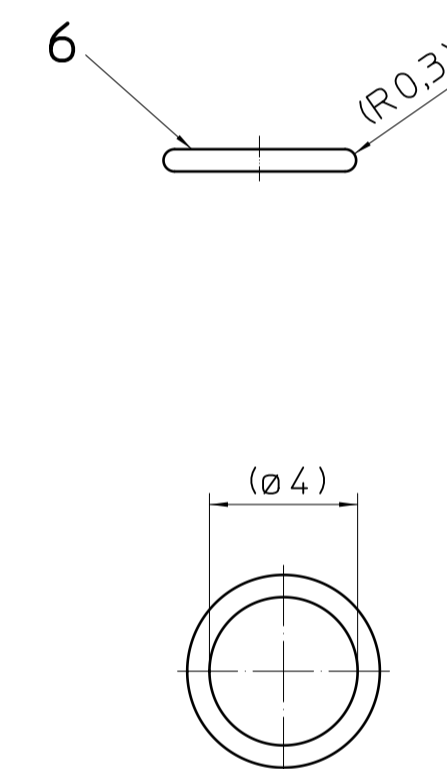
HOUSING SCREW
2:1



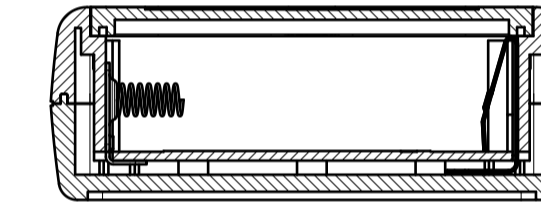
BATTERY COVER SCREW
2:1



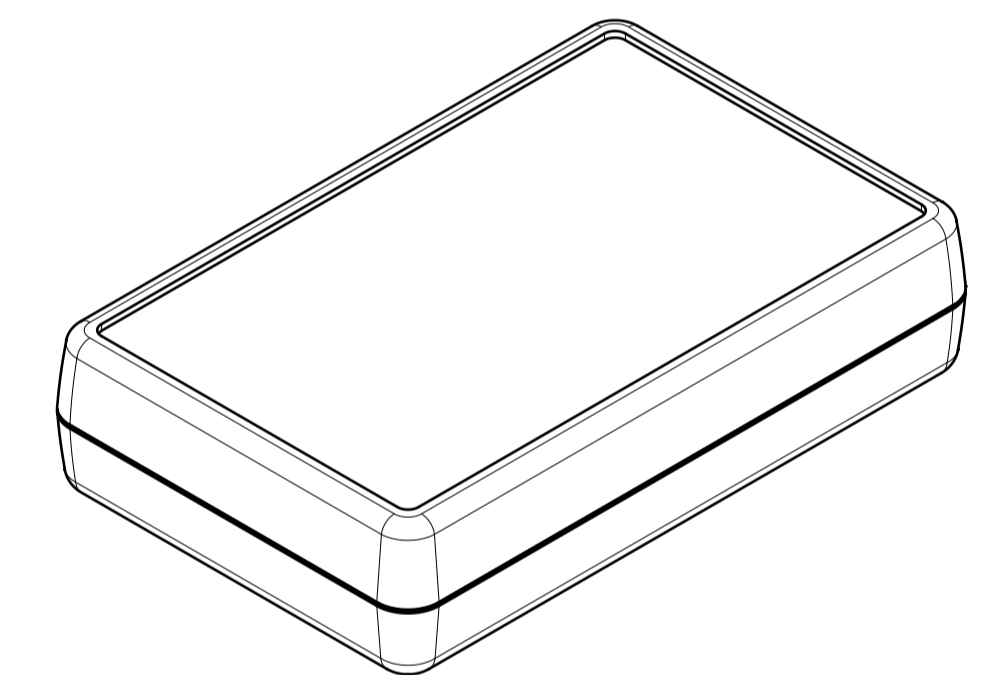
O-RING
5:1



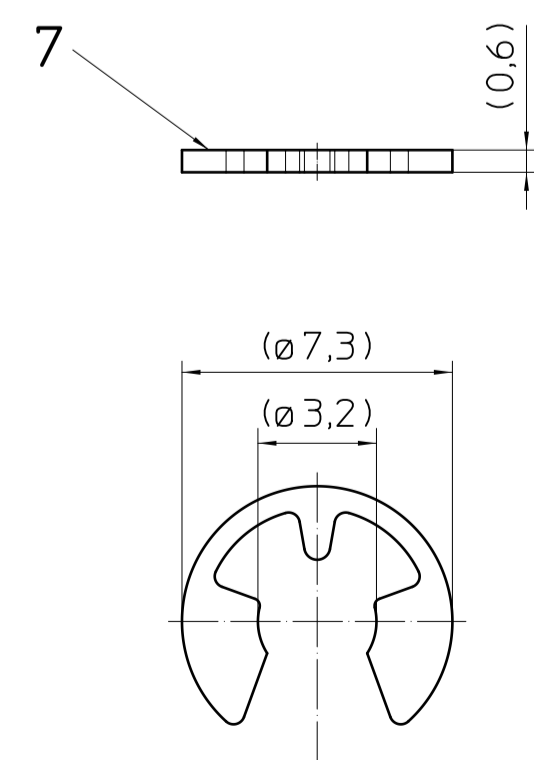
B-B



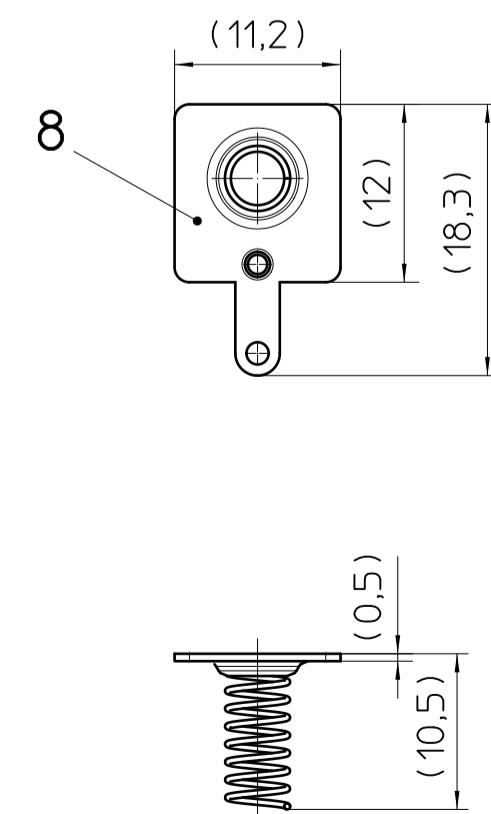
height
width
depth



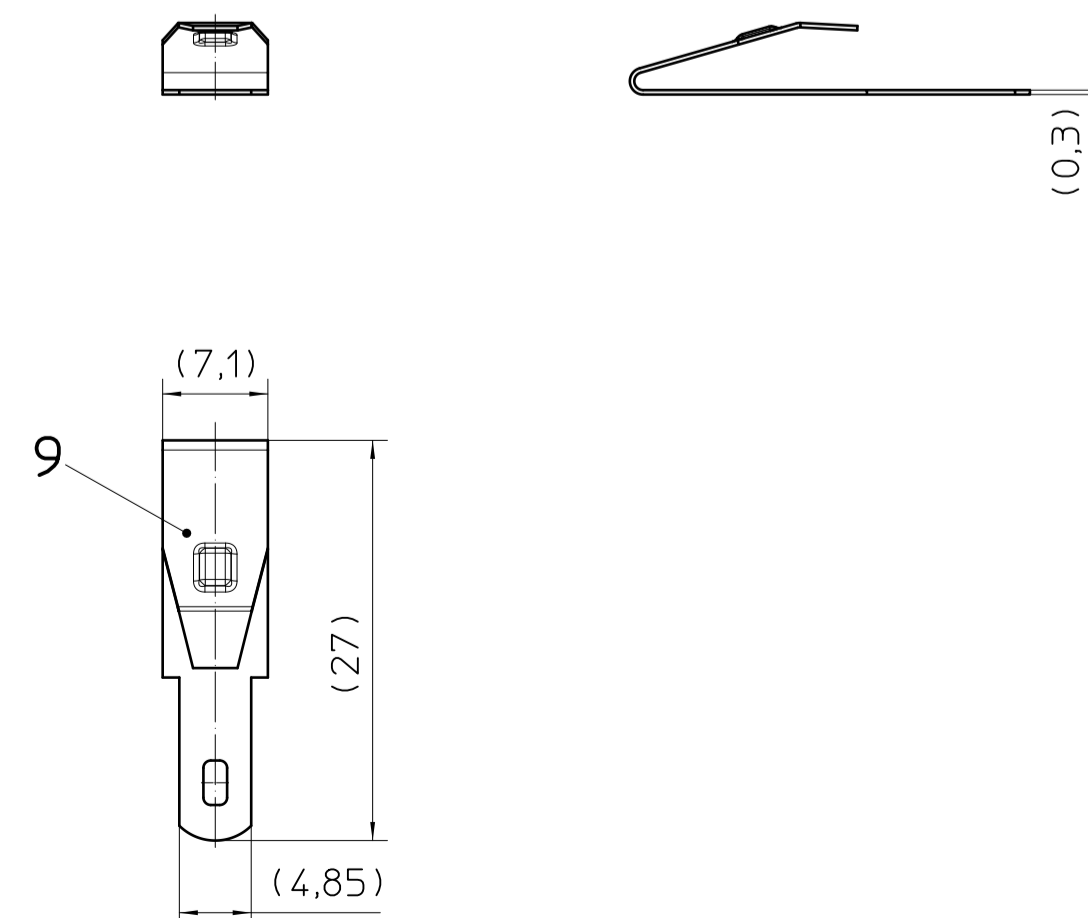
LOCKING WASHER
5:1



AA CONTACT MINUS
2:1



AA CONTACT PLUS/MINUS
2:1



- General Information:
- Simplified representation
 - Document excluded from change process
 - Linear dimensions [mm]
 - Tolerances apply in a normal climate according to DIN EN ISO 291-23/50-2
 - Further information: www.phoenixcontact.com
 - webcode: #0855

- Additional information:
- Minimum radii for mechanical processing R=1.2

⊕ = workpiece zero point for mechanical processing

- A. Area for keypad
- B. Screw domes for housing screws
- C. Additional attachment point for main PCB with self tapping screws ø1.8x10 (screws not included)
- D. Guide for AA-contacts
- E. Phillips recessed head PH 1
- F. Slot for screwdriver 1.0x6.5
- G. PCB main BC position (I=1.5)

KIT

HCS-C MINI 1 9V C C		
Pos.	QTY	Description
1	1	HOUSING FRONT (ABS)
2	1	HOUSING REAR (ABS)
3	1	BATTERY COVER (ABS)
4	4	SCREW ISO 7049-ST2.2X9.5-C-H
5	1	BATTERY COVER SCREW
6	1	O-RING DIN ISO 3601
7	1	LOCKING WASHER DIN 6799
8	2	AA CONTACT MINUS
9	2	AA CONTACT PLUS/MINUS

DIN A1	document-No. / Ri 00966736 / 02	date 06.10.2017	scale 1:1
PHOENIX CONTACT	ident.-No. 2203149	document-type TECDOC 2D_Productdrawing	
page 1 of 2	description HCS-C MINI 1 9V C C 7035		

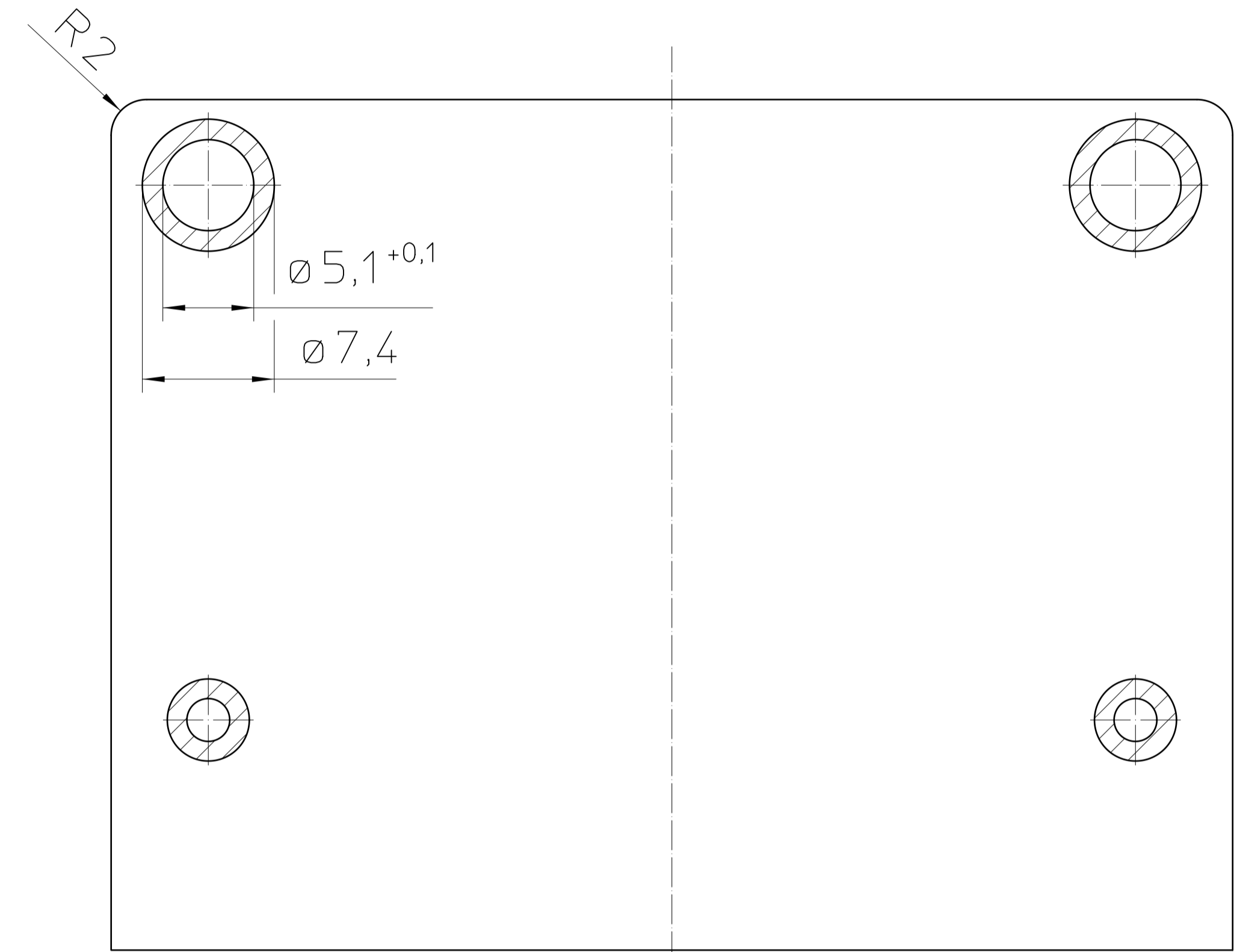
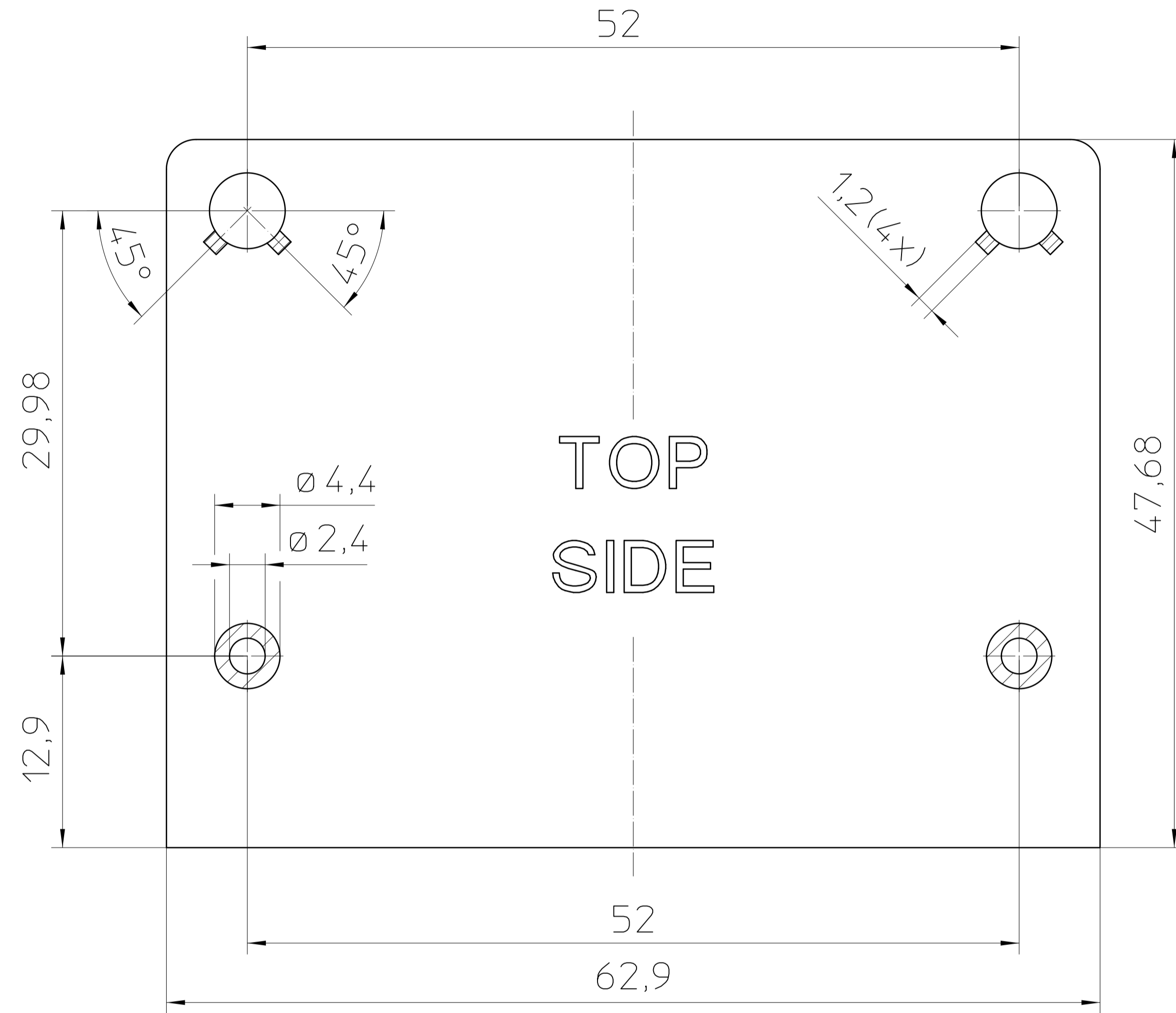
Weitergabe sowie Vervielfältigung dieses Dokuments, Verwertung und Mitteilung seines Inhalts sind verboten, soweit nicht ausdrücklich gestattet. Allen Fall der Patent-, Gebrauchsmuster- oder Designschutzrechte vorbehalten.

Transfer or duplication of this document as well as the utilization or communication of its content are not permitted unless express consent is given. In case of patent, utility model or design patent registrations.

Transfer or duplication of this document as well as the utilisation or communication of its content are not permitted unless express consent is granted. Violations give rise to claims for damages. All rights reserved in case of patent, utility model or design patent registrations.

Weitergabe sowie Vervielfältigung dieses Dokuments, Verwertung und Mitteilung seines Inhalts sind verboten, soweit nicht ausdrücklich gestattet. Zuwiderhandlungen verpflichten zu Schadensersatz. Alle Rechte für den Fall der Patent-, Gebrauchsmuster- oder Designeintragung vorbehalten.

HCS-C MINI PCB MAIN BC



General Information

- Document excluded from change process
- CAD Data see Download-Center on www.phoenixcontact.com
- Linear dimensions [mm]
- General tolerances PCB: dimensions ≤ 30 : $\pm 0,1/R \pm 0,2/\pm 1^\circ$
dimensions > 30 : $\pm 0,15/R \pm 0,2/\pm 1^\circ$
symmetry: 0,2

- Restricted area
- Thickness= 1,4-1,8
- Component mounting area on top side: 2920mm²
- Component mounting area on bottom side: 2870mm²

DIN A3	document-No. / RI	date	scale
	00966736 / 02	06.10.2017	2:1
	ident.-No.	document-type	
	2203149	TECDOC 2D_Productdrawing	
page 2 of 2	description		
HCS-C MINI 1 9V C C 7035			