

Han 1A-2+PE-s-m

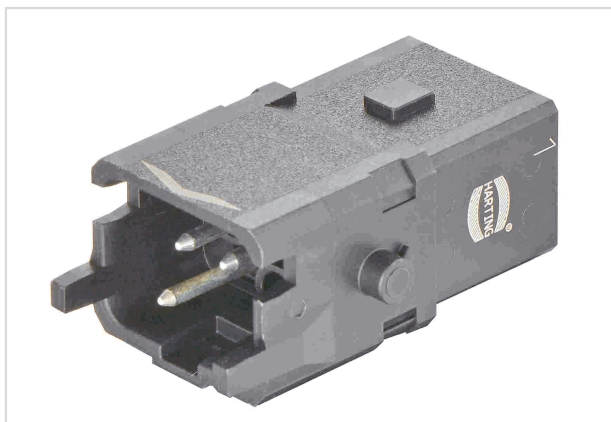


Image is for illustration purposes only. Please refer to product description.

Part number	09 10 002 2606
Specification	Han 1A-2+PE-s-m
HARTING eCatalogue	https://b2b.harting.com/09100022606

Identification

Category	Inserts
Series	Han® 1A

Version

Termination method	Screw termination
Gender	Male
Size	1 A
Number of contacts	2
PE contact	Yes
Locking type	Single locking lever
Details	Please order locking lever separately. Order separately the single wire seal or the hoods/housings for an IP65 performance.

Details	A Han® 1A configuration that only consists of inserts (with or without strain relief, 09 10 000 5300) is an unenclosed connector according to IEC 61984. In this case protection against electric shock must be provided by the installation methods of the user.
Details	Contact inserts must not be coupled or decoupled under electrical load. Contact inserts must not be powered-up in the un-mated condition. Contact inserts with screw termination technology (2+PE and 3+PE) only differ in the number of contacts. If both variants are used in one application, the user must prevent incorrect mating! Safety instructions according to VDE 0100-410, Chapter 414.4.3 and EN 60204-1, Chapter 13.4.5 d) must be observed.

Technical characteristics

Conductor cross-section	0.75 ... 1.5 mm ²
Rated current	10 A



Pushing Performance
Since 1945

Technical characteristics

Rated voltage conductor-earth	230 V
Rated voltage conductor-conductor	400 V
Rated impulse voltage	4 kV
Pollution degree	3
Rated current acc. to UL	10 A @ AWG 16
Rated voltage acc. to UL	250 V
Insulation resistance	>10 ⁸ Ω
Tightening torque	0.25 Nm
Limiting temperature	-30 ... +90 °C
Mating cycles	≥100
Degree of protection acc. to IEC 60529	IP20

Material properties

Material (insert)	Polyamide (PA)
Colour (insert)	RAL 9005 (jet black)
Material (contacts)	Copper alloy
Surface (contacts)	Silver plated
Material flammability class acc. to UL 94	V-0
RoHS	compliant with exemption
RoHS exemptions	6(c): Copper alloy containing up to 4 % lead by weight
ELV status	compliant with exemption
China RoHS	50
REACH Annex XVII substances	Not contained
REACH ANNEX XIV substances	Not contained
REACH SVHC substances	Yes
REACH SVHC substances	Lead
ECHA SCIP number	5dbb3851-b94e-4e88-97a1-571845975242
California Proposition 65 substances	Yes
California Proposition 65 substances	Lead
Fire protection on railway vehicles	EN 45545-2 (2020-08)
Requirement set with Hazard Levels	R22 (HL 1-3) R23 (HL 1-3)



Pushing Performance
Since 1945

Specifications and approvals

Specifications	EN 45545-2 Fire protection on railway vehicles
	IEC 61373 Category 1 Class B
	IEC 60664-1
	IEC 61984
Approvals	DNV GL
UL / CSA	UL 1977 ECBT2.E235076
	CSA-C22.2 No. 182.3 ECBT8.E235076
	Please contact your local HARTING subsidiary for further information.

Commercial data

Packaging size	1
Net weight	12.3 g
Country of origin	Germany
European customs tariff number	85366990
GTIN	5713140162716
eCl@ss	27440205 Contact insert for industrial connectors