

## Han 64EEE panel feed through

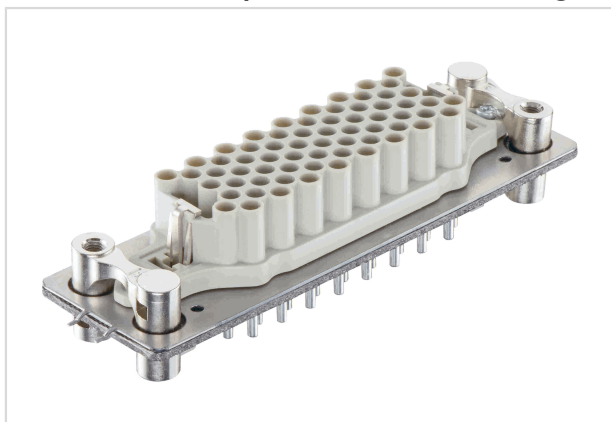


Image is for illustration purposes only. Please refer to product description.

|                    |   |
|--------------------|---|
| Part number        | 09 32 064 0001  |
| Specification      | Han 64EEE panel feed through  |
| HARTING eCatalogue | <a href="https://b2b.harting.com/09320640001">https://b2b.harting.com/09320640001</a> |

### Identification

|          |                      |
|----------|----------------------|
| Category | Inserts              |
| Series   | Han <sup>®</sup> EEE |
| Element  | Panel feed through   |

### Version

|                    |                   |
|--------------------|-------------------|
| Termination method | Crimp termination |
| Gender             | Male<br>Female    |
| Size               | 24 B              |
| Number of contacts | 64                |
| PE contact         | Yes               |

### Technical characteristics

|                       |                   |
|-----------------------|-------------------|
| Rated current         | 16 A              |
| Rated voltage         | 500 V             |
| Rated impulse voltage | 6 kV              |
| Pollution degree      | 3                 |
| Insulation resistance | $>10^{10} \Omega$ |
| Limiting temperature  | -40 ... +125 °C   |
| Mating cycles         | $\geq 500$        |

### Material properties

|                   |                    |
|-------------------|--------------------|
| Material (insert) | Polycarbonate (PC) |
|-------------------|--------------------|



Pushing Performance  
Since 1945

## Material properties

|                                      |  |
|--------------------------------------|--|
| Colour (insert)                      | RAL 7032 (pebble grey)                                 |
| RoHS                                 | compliant with exemption                               |
| RoHS exemptions                      | 6(c): Copper alloy containing up to 4 % lead by weight |
| ELV status                           | compliant with exemption                               |
| China RoHS                           | 50   |
| REACH Annex XVII substances          | Not contained  |
| REACH ANNEX XIV substances           | Not contained  |
| REACH SVHC substances                | Yes  |
| REACH SVHC substances                | Lead   |
| California Proposition 65 substances | Yes  |
| California Proposition 65 substances | Antimony trioxide<br>Lead<br>Nickel                    |
| Fire protection on railway vehicles  | EN 45545-2 (2020-08)                                   |
| Requirement set with Hazard Levels   | R22 (HL 1-3)<br>R23 (HL 1-3)                           |

## Specifications and approvals

|                |                          |
|----------------|--------------------------|
| Specifications | IEC 60664-1<br>IEC 61984 |
|----------------|--------------------------|

## Commercial data

|                                |   |
|--------------------------------|---|
| Packaging size                 | 1   |
| Net weight                     | 258 g   |
| Country of origin              | Germany   |
| European customs tariff number | 85389099  |
| GTIN                           | 5713140049420                                     |
| eCl@ss                         | 27440205 Contact insert for industrial connectors |