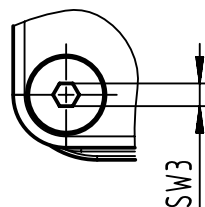
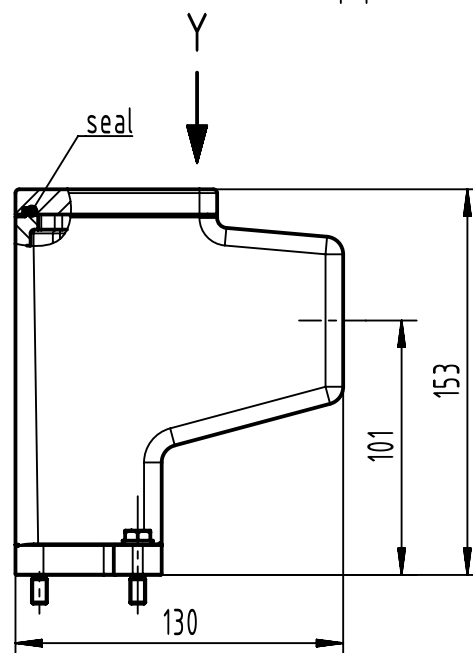
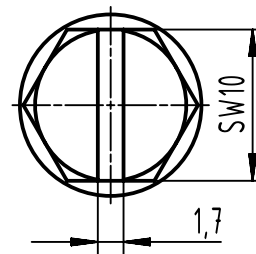


Y (1:1) 4x



X (2:1) 2x



Technical characteristics  
acc. to DIN EN 50124-1:

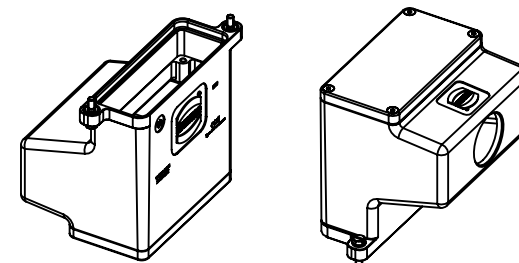
Rated insulation voltage: 1,0 kV

Overvoltage category: OV2



Pollution degree: PD3

Use of shrinking tubes necessary!

The clearance and creepage distances must be considered at the assembly and at the selection of terminals!



Cover and countersunk-head screws  
are enclosed separately.

	All Dimensions in mm Original Size DIN A4		Scale 1:3		Free size tol.		Ref.	
	All rights reserved		Created by MOELLERLI		Inspected by 3236		Sub.	
	Department EL PD		Standardisation		Date 2024-01-15		State Final Release	
	HARTING D-32339 Espelkamp		Title Han 24HPR-enlarged-HAE-SL-M50		Doc-Key / ECM-Nr. 100220908/UGD/002/F 500000261698		Rev. F	
		Type TB		Number 19 40 024 0655		Page 1/1		