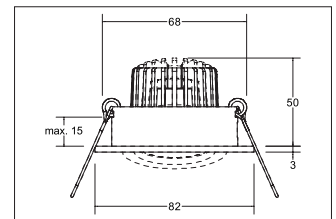
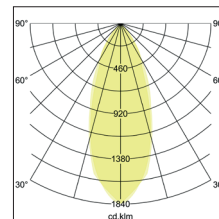
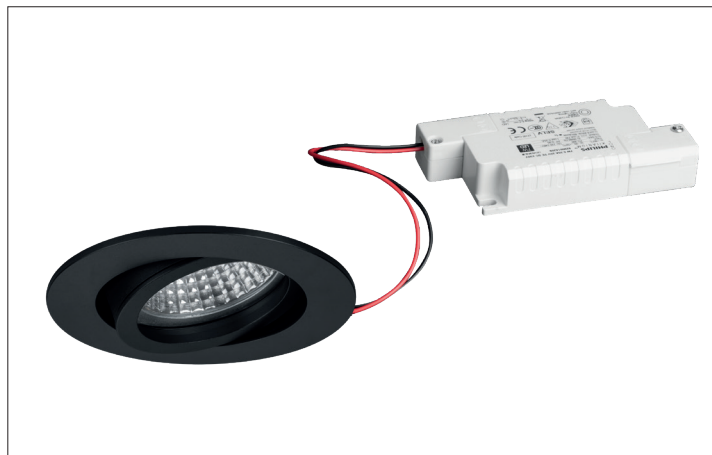


LED recessed spot set, phase dimmable

Artikel-Nr. 39143083



LED recessed spot set, phase dimmable, round. In a compact design, for installation in tool-less rapid assembly systems. Set including a converter for 230-V mains voltage, trailing-edge phase dimmable, dimensions of converter: L 110 x W 50 x H 19 mm. Mounting method: Recessed mounting, Place of installation: Ceiling-mounted, Material: Aluminium / Glass / Plastic, Degree of protection: according to DIN EN 60529 IP20, Protection class: (EN 61140) II, Voltage: 230V AC 50Hz, Power: 6W, Amount of light sources / fittings: 1.0 Qty, Luminous flux: 680lm, Colour temperature: 3000 K, Light colour : White, Beam angle: 38°, Adjustability: Pivoted, With control gear: Yes, control: Trailing-edge phase.

Artikel-Nr.	39143083
Stand:	19.07.2021 23:55

Colour of light	3000 K
Beam angle	38 °
Amount of light sources / fittings	1 Qty
Material	Aluminium / Glass / Plastic
Lamp	LED
Colour rendering	CRI > 80
control	Trailing-edge phase
Outer diameter	82 mm
Built-in diameter	68 mm

Installation depth	50 mm
Voltage	230V AC 50Hz
Degree of protection	IP20
Protection class	II
Circlip	Without circlip
Adjustability	Pivoted
Swivel angle	20 °
Circuit type	Parallel conduction