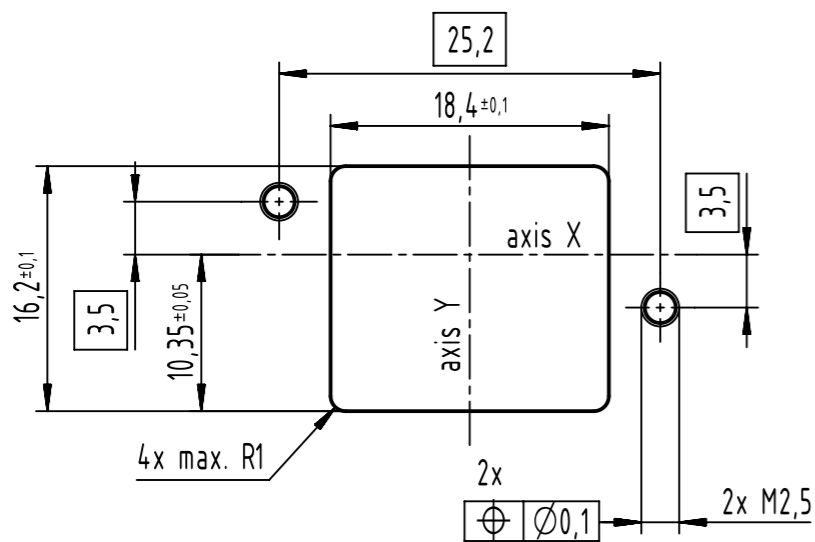
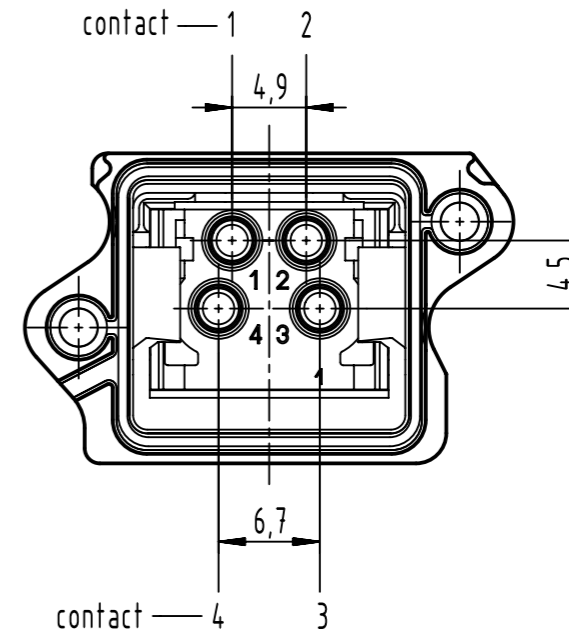
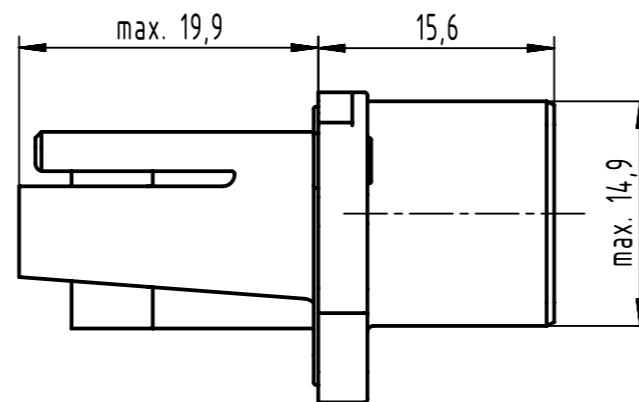
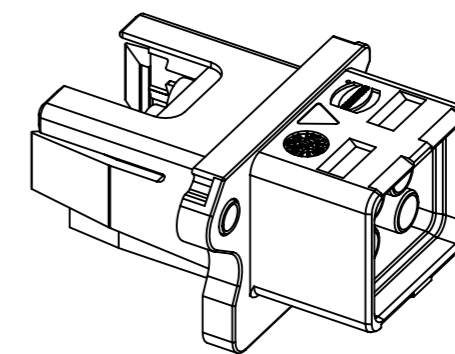
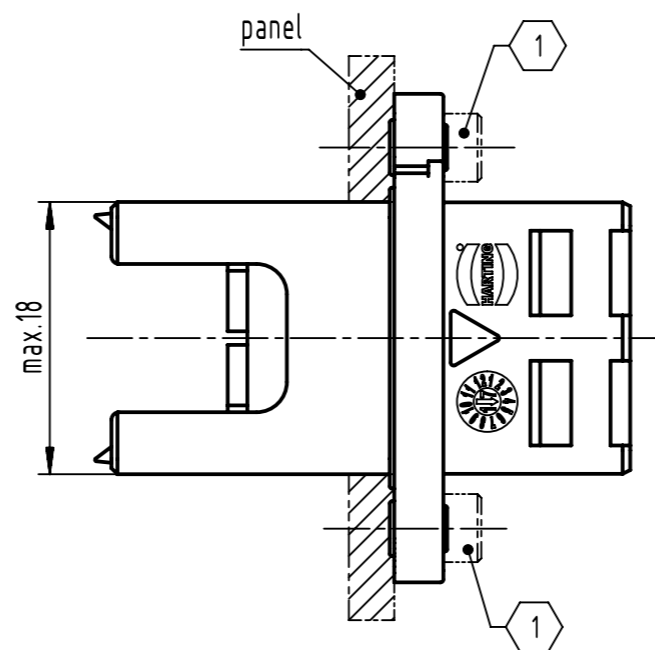
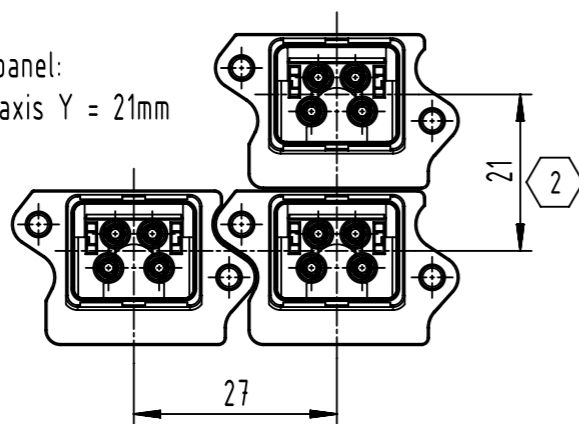


panel cutting



panel thickness = max. 5.5mm

connector pitch on panel:  
axis X = 27mm and axis Y = 21mm



2 connector pitch with coding clip 0945840002X Y = 23mm

1 2x M2.5; screws acc. to ISO 4762;  
please order separately; bolting torque 0.3Nm - 0.5Nm

further information see product data sheet

	All rights reserved Department EL PD	Created by STORCK	Inspected by TADJE	Standardisation 302077	Date 2021-04-29	State Final Release	Ref. Sub.
	HARTING D-32339 Espelkamp	Title HARTING PushPull V4 Compact Housing 48V/12A				Doc-Key / ECM-Nr. 100671830/UGD/000/E 500000194222	
		Type TB	Number 09462454420		Rev. E	Page 1/1	