

## Han K4/4-M 10-22mm<sup>2</sup> berührsicher

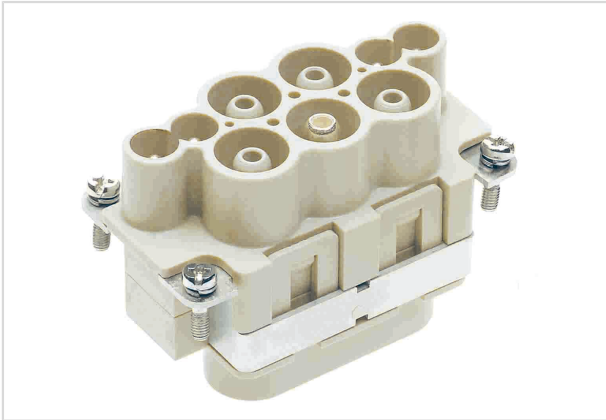


Image is for illustration purposes only. Please refer to product description.

Part number	09 38 008 2602
Specification	Han K4/4-M 10-22mm <sup>2</sup> berührsicher
HARTING eCatalogue	<a href="https://b2b.harting.com/09380082602">https://b2b.harting.com/09380082602</a>

### Identification

Category	Inserts
Series	Han-Com <sup>®</sup>
Identification	Han <sup>®</sup> K 4/4

### Version

Termination method	Axial screw termination / cage-clamp termination
Gender	Male
Size	10 B
Number of contacts	8
Number of signal contacts	4
Number of power contacts	4
PE contact	Yes
Details	Finger safe

### Technical characteristics

Conductor cross-section	10 ... 22 mm <sup>2</sup> 0.14 ... 2.5 mm <sup>2</sup> Signal
Wire outer diameter	≤8.9 mm ≤11 mm @ 22 mm <sup>2</sup>
Rated current	63 A
Rated voltage	690 V
Rated impulse voltage	8 kV
Pollution degree	3



Pushing Performance  
 Since 1945

## Technical characteristics

Rated current (signal)	16 A
Rated voltage (signal)	250 V
Rated impulse voltage (signal)	4 kV
Pollution degree (signal)	3
Rated current acc. to UL	63 A
Rated voltage acc. to UL	600 V
Rated current acc. to UL (signal)	16 A
Rated voltage acc. to UL (signal)	230 V
Rated current acc. to CSA	63 A
Rated voltage acc. to CSA	600 V
Rated current acc. to CSA (signal)	16 A
Rated voltage acc. to CSA (signal)	230 V
Insulation resistance	>10 <sup>10</sup> Ω
Contact resistance	≤0.5 mΩ
Contact resistance, signal area	≤3 mΩ
Stripping length	11 ... 12 mm
	13 ... 14 mm @ 22 mm <sup>2</sup>
	7 ... 9 mm Signal
Tightening torque	3 Nm @ 10 mm <sup>2</sup>
	4 Nm @ 16 mm <sup>2</sup>
	4 Nm @ 22 mm <sup>2</sup>
Limiting temperature	-40 ... +125 °C
Mating cycles	≥500

## Material properties

Material (insert)	Polycarbonate (PC)
Colour (insert)	RAL 7032 (pebble grey)
Material (contacts)	Copper alloy
Surface (contacts)	Silver plated
Material flammability class acc. to UL 94	V-0
RoHS	compliant with exemption
RoHS exemptions	6(a) / 6(a)-I: Lead as an alloying element in steel for machining purposes and in galvanised steel containing up to 0,35 % lead by weight / Lead as an alloying element in steel for machining purposes containing up to 0,35 % lead by weight and in batch hot dip galvanised steel components containing up to 0,2 % lead by weight
	6(c): Copper alloy containing up to 4 % lead by weight



Pushing Performance  
Since 1945

## Material properties

ELV status	compliant with exemption
China RoHS	50
REACH Annex XVII substances	Not contained
REACH ANNEX XIV substances	Not contained
REACH SVHC substances	Yes
REACH SVHC substances	Potassium 1,1,2,2,3,3,4,4,4-nonafluorobutane-1-sulphonate Lead
ECHA SCIP number	1e38d35d-d1be-4585-8e03-95faccd739bf
California Proposition 65 substances	Yes
California Proposition 65 substances	Lead Nickel
Fire protection on railway vehicles	EN 45545-2 (2020-08)
Requirement set with Hazard Levels	R22 (HL 1-3) R23 (HL 1-3)

## Specifications and approvals

Specifications	IEC 60664-1 IEC 61984
Approvals	DNV GL
UL / CSA	UL 1977 ECBT2.E235076 CSA-C22.2 No. 182.3 ECBT8.E235076

## Commercial data

Packaging size	1
Net weight	119.56 g
Country of origin	Romania
European customs tariff number	85366990
GTIN	5713140056275
eCl@ss	27440205 Contact insert for industrial connectors