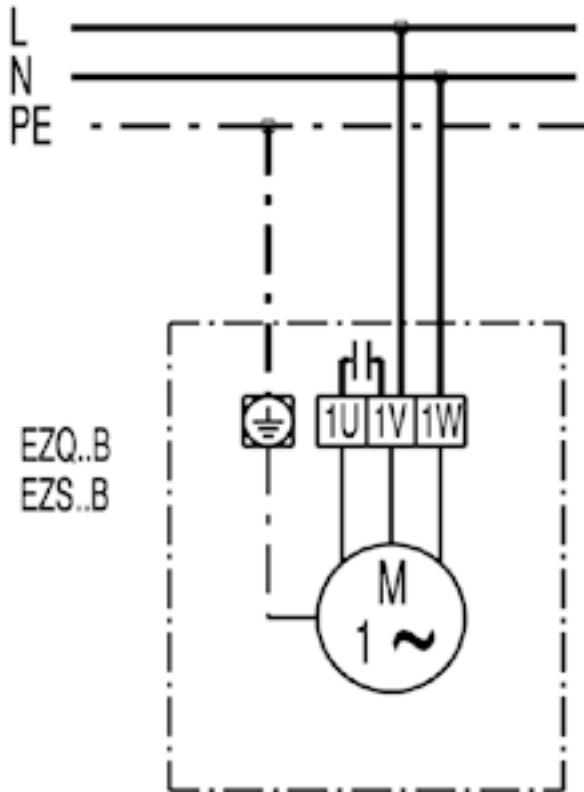


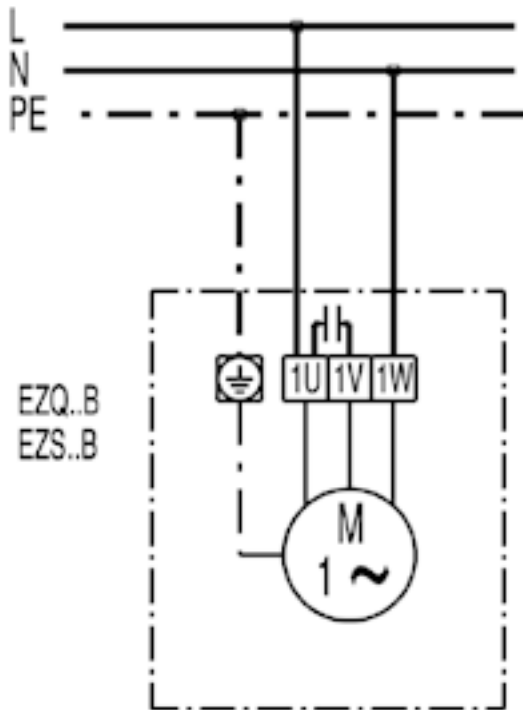
EZQ 20/2 B

EZQ / EZS..B Rechtslauf

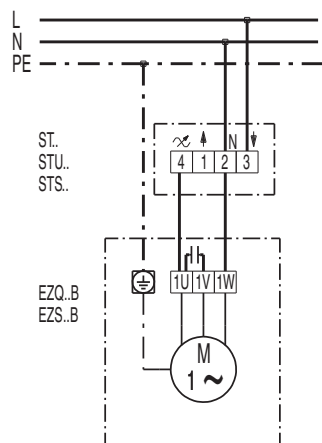


EZQ 20/2 B

EZQ / EZS..B Linkslauf

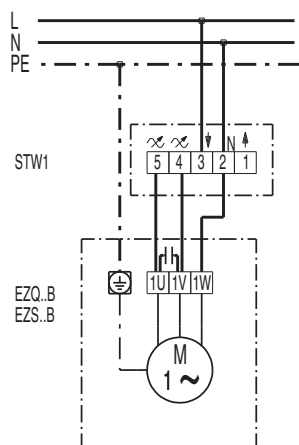


EZQ / EZS..B mit Drehzahlsteller ST / STU / STS Linkslauf

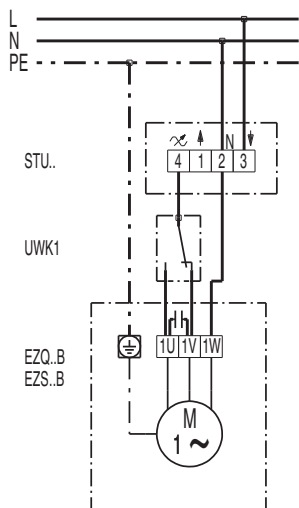


EZQ 20/2 B

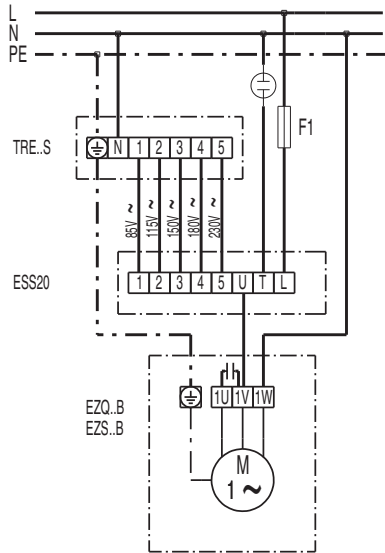
EZQ / EZS..B mit Drehzahlsteller STW1



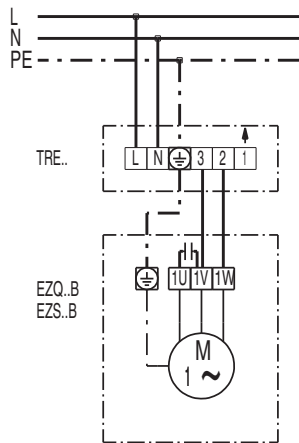
EZQ / EZS..B mit Wendeschalter UKW 1 und Drehzahlsteller STU..



EZQ / EZS..B mit 5-Stufentransformator TRE..S / Tr..S und 5-Stufenschalter ESS20

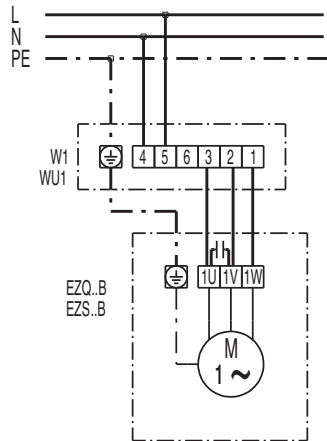


EZQ / EZS..B mit 5-Stufentransformator TRE..



EZQ 20/2 B

EZQ / EZS..B mit Wendeschalter W1 / WU1



EZQ / EZS..B mit Wendeschalter FS 7

