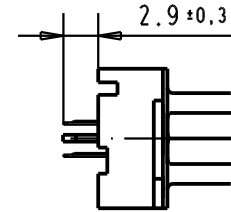
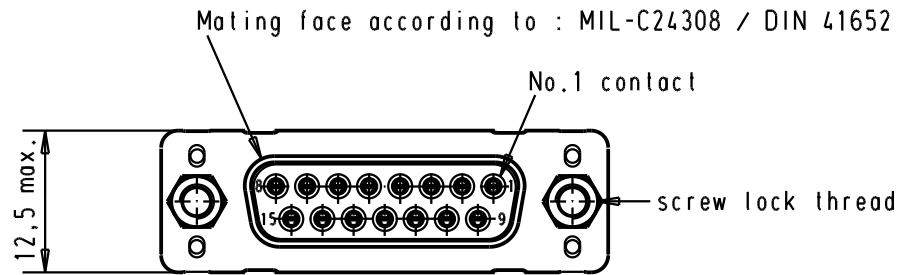
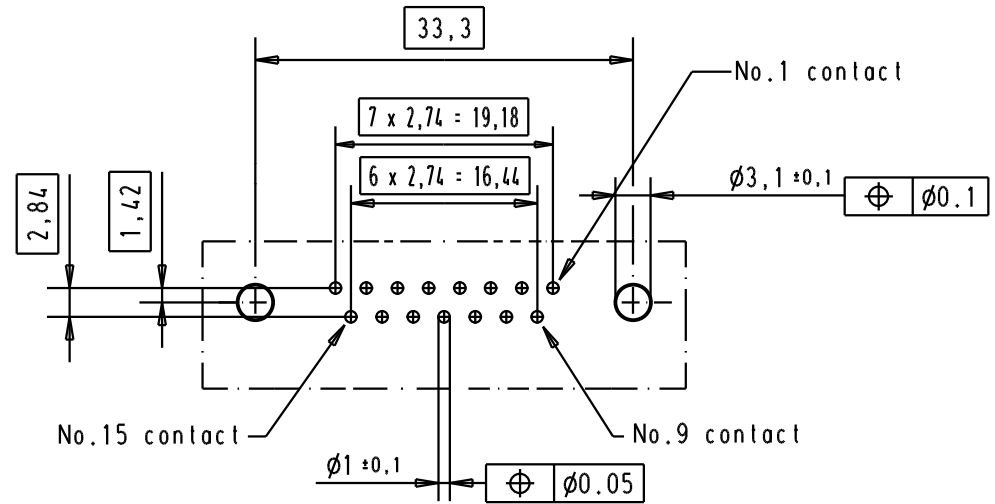
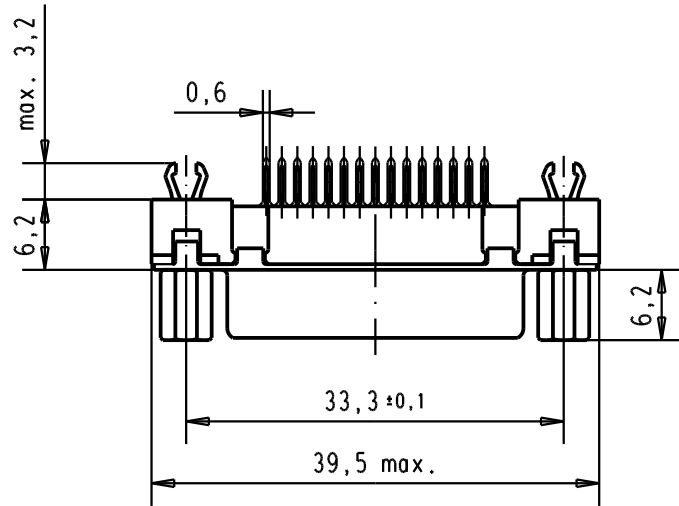


5 4 3 2 1



Printed board layout
component side
PTH's plating = tin lead



Connector retention and insertion forces on the PCB = 25 / 80 newtons

A	09 66 251 3533	M3	1							<p>All Dim. in mm Orig. Size DIN A 4</p>	D-sub, 15 poles, female, straight, with solder pins 2.9, screw lock and grounding board lock.	Maßstab/ Scale 1,5:1
	09 66 251 6533	M3	2				Det.	07-FEB-02	JB			
	09 66 251 7533	M3	3				Insp.					
	09 66 251 3513	4-40 UNC	1				Stand.					
	09 66 251 6513	4-40 UNC	2	31892	05/05/04	JH						
	09 66 251 7513	4-40 UNC	3	29746	07-FEB-02	JB	HARTING EURL F-95972 Paris				TB 09 66 251 x5x3	Blatt/ Page 1 /
	Part number	Screw lock thread	Performance level	Mod.	Dat.	Name	Sub.					