

D-Sub M 17W2 ANG MA 20A UNC NM30 BL

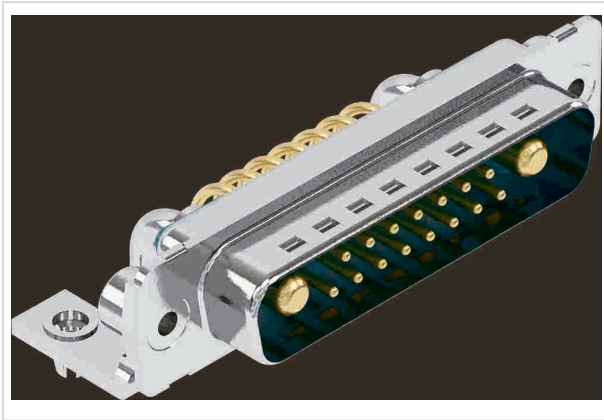


Image is for illustration purposes only. Please refer to product description.

Part number	09 69 300 9163
Specification	D-Sub M 17W2 ANG MA 20A UNC NM30 BL
HARTING eCatalogue	https://b2b.harting.com/09693009163

Identification

Category	Connectors
Series	D-Sub
Identification	Mixed
Element	Connector
Description of the contact	Turned Angled

Version

Termination method	Wave soldering termination
Gender	Male
Size	D-Sub 3
Number of contacts	17
Number of signal contacts	15
Number of power contacts	2
PCB fixing	With frame With board locks
Locking type	Fixing flange with thread 4-40 UNC

Technical characteristics

Contact spacing (termination side)	2.54 mm
Flange height	7.3 mm
Rated current	5 A
Rated current (power)	20 A
Insulation resistance	$>10^5 \Omega$



Pushing Performance
 Since 1945

Technical characteristics

Contact resistance, signal area	≤10 mΩ
Contact resistance, power area	≤1 mΩ
Tightening torque	≤0.6 Nm Female screw lock
Limiting temperature	-55 ... +125 °C
Performance level	NM 30 (S4) 1
Mating cycles	>500
Test voltage $U_{r.m.s.}$	1 kV
Isolation group	IIIa (175 ≤ CTI < 400)
PCB thickness	1.6 mm
Hot plugging	No

Material properties

Material (insert)	Thermoplastic resin, glass-fibre filled (PBT) Shell: steel, tin plated
Colour (insert)	Green
Material (contacts)	Copper alloy
Surface (contacts)	Gold plated Mating side Sn over Ni Termination side
Layer thickness	≥0.76 μm
Layer thickness	≥30 μinch
Material flammability class acc. to UL 94	V-0
RoHS	compliant with exemption
RoHS exemptions	6(a) / 6(a)-I: Lead as an alloying element in steel for machining purposes and in galvanised steel containing up to 0,35 % lead by weight / Lead as an alloying element in steel for machining purposes containing up to 0,35 % lead by weight and in batch hot dip galvanised steel components containing up to 0,2 % lead by weight 6(c): Copper alloy containing up to 4 % lead by weight
ELV status	compliant with exemption
China RoHS	50
REACH Annex XVII substances	Not contained
REACH ANNEX XIV substances	Not contained
REACH SVHC substances	Yes
REACH SVHC substances	Lead
ECHA SCIP number	ecef7555-f643-4ceb-a337-fc54762297f1
California Proposition 65 substances	Yes



Pushing Performance
Since 1945

Material properties

California Proposition 65 substances Lead

Requirement set with Hazard Levels R26

Specifications and approvals

Specifications DIN 41652-1
CECC 75301-802

UL / CSA UL 1977 ECBT2.E102079

Commercial data

Packaging size 25

Net weight 18.56 g

Country of origin Germany

European customs tariff number 85366990

GTIN 5713140100145

eCl@ss 27440214 D-Sub coupler