

## BL 520 PRO-ACTIVE

according to DIN 13277

### Equipment

- 5 aluminium drawers
- Forced-air cooling
- Equipped with castors
- Key switch
- Automatic defrosting
- Condensate evaporation
- Potential-free contact
- Digital temperature display
- Comfortable access
- Antifreeze
- Visual and audible alarm signal, even in the event of power failure
- Minimum/maximum temperature memory

**MADE IN  
GERMANY** **CE** 0483



*Interior may differ visually.*

### PRO-ACTIVE-Features

- Faster response time in the event of impending faults thanks to proactive alarms
- Data recording can be read out via USB interface using a USB stick and software
- Minimisation of temperature deviations in the cold room
- Maximum storage safety thanks to harmonised components



- **PRO-ACTIVE- Control:** Permanent, proactive monitoring of the performance data and alerts in the case of deviations. World's most accurate temperature control in refrigerated areas thanks to two standard PT-1000 sensors
- **External housing** made from galvanised sheet steel (rust-proof), with white, anti-scratch powder coating. Length of the plug cable: approx. 3 m.
- **Equipped with castors.**
- **Interior made from** smooth aluminium with colourless protective coating. Gibs (every 15 mm) for flexible interior arrangement.
- **Interior** can be customised (surcharge may apply). See optional equipment.
- **Extra-thick insulation**, made from high-quality, compression-moulded and environmentally friendly material. Energy saving.
- **Self-closing door** with easy-to-replace plastic magnetic seal frame, lockable.
- **Door stop** on the right-hand side (by default, see illustration), or the left-hand side, can be retrofitted.
- **Forced-air cooling**, with axial blower, switches off automatically when you open the door, ensures a uniform temperature and minimizes temperature deviations.
- **Automatic fast defrosting** thanks to time-limited and temperature-monitored reversal of the refrigerant circuit.
- **Condensate evaporation** in stainless steel heated dish beneath the refrigerator floor.
- **Key switch** protected control panel against tampering. Membrane keyboard with digital temperature display and minimum/maximum temperature memory.
- **Power failure alarm** (visual and audible alarm), the monitoring unit remains in operation for approx. 30 hours on battery power.
- **Warning functions** with visual and audible alarm signal in the case of temperature deviations or other malfunctions. Door open alarm after 60 seconds.
- **Alarms** can be forwarded via email or SMS using the Kirsch EVOLUTION CLOUD Module (optional).
- **Data documentation** can be read via USB interface with KIRSCH Datanet software.
- **Antifreeze** against sub-zero temperatures.
- **Ventilation-enforced refrigerating machine** hermetically sealed, energy saving, low-noise, easy to service.
- **Low-noise compressor** reduces noise.

## Specification

Capacity	500 litres
Temperature setting	+4 °C
Voltage	220 – 240 V, 50/60 Hz
Power consumption	60 watts
Normal consumption	0.89 kWh/24 h
Admissible ambient temperature	from +10 °C to +38 °C
Heat emission (max.)	554 watts
Exterior dimensions (including door handle and distance from wall)	w x d x h = 77 x 76 x 195.5 cm
Usable dimensions	w x d x h = 56 x 39,5 x 129 cm
Exterior dimensions with door open at 90°	w x d = 83 x 144 cm
Drawer inner dimensions	w x d x h = 56 x 39.5 x 10 cm
Max. load drawer	50 kg
Weight (net/gross)	139 kg/160 kg
Temperature deviation	+/-0.8 °C
Noise emission	47,7 dB(A)

## Optional equipment

KIRSCH refrigerators and freezers offer numerous equipment options that can be retrofitted.



### Glass door with lock

Transparency: avoid opening the door unnecessarily to inspect the contents. Lockable.



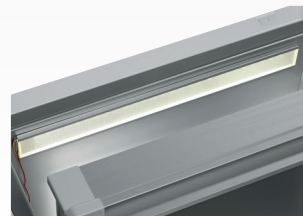
### Additional Shelves

Wire shelves, robust with load capacity up to 40 and 50 kg.



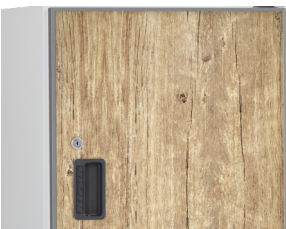
### Door coupling

Connects the furniture door to the device.



### Interior lighting, side wall

Optional, optimal and energy-efficient lighting for the interior using an LED lightstrip.



### Decorative frame

Made of stainless steel, allows to cover door with a decorative panel (thickness max. 2 mm).



### Condensation tray

For manual draining of condensation water.



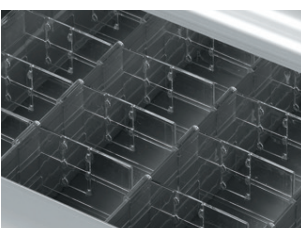
### Access Port

Simple insertion of an external temperature sensor with integrated cable feed-through.



### Levelling feet

Levelling feet instead of castors.



### Additional length and cross dividers

For the optimum organisation of your refrigerated goods.



### Drawers on runners

Up to eight drawers are possible in total.



## Vario Support

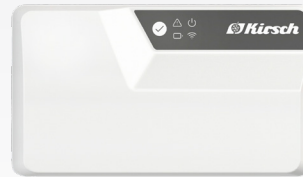
Storage shelf on runners.

## Accessories for temperature documentation



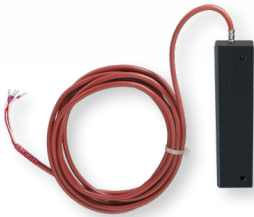
### PC-KIT-NET

Automatic temperature documentation and monitoring via your network (LAN connection).



### KIRSCH EVOLUTION CLOUD-Module

Maximum storage safety through optimal connectivity and real-time monitoring. \*



### External PT100/PT1000 with cold block

Additional temperature sensor for connection to existing/external monitoring system.



### Circular blade temperature recorder

Depending on the model, it is either installed in the machine compartment panel of the unit or integrated into an additional housing attachment.

\* For more information about our cloud, please contact us.

## Philipp Kirsch GmbH

Im Lossenfeld 14  
77731 Willstätt

Telefon: +49 (0) 781 9227-0  
Telefax: +49 (0) 781 9227-200  
info@kirsch-medical.de

[www.kirsch-medical.com](http://www.kirsch-medical.com)



You can find our complete product overview on our website:  
[www.kirsch-medical.com](http://www.kirsch-medical.com)