

# JULIE FLEX

EN	Installation Instructions	HR	Uputstvo za montažu	SE	Installationsanvisning
DE	Montageanleitung	NL	Montagehandleiding	RU	Инструкция по монтажу
CZ	Montážní návod	RO	Instructiuni de montaj	SRB	Instrukcija za instalaciju
DK	Monteringsvejledning	IT	Istruzioni di montaggio	SK	Montážny návod
EE	Paigaldusjuhend	LT	Montavimo Instrukcijos	SLO	Navodilo za montažo
FI	Asennusohje	LV	Instalācijas instrukcija	CN	安装说明书
FR	Notice de montage	NO	Monteringsanvisning		
HU	Szerelési útmutató	PL	Instrukcja montażu		



1. Installation and commissioning may only be carried out by authorized specialists and wired in accordance with the latest IEE electrical regulations or the national standards.



2. Mains power must be switched off before carrying out installation.

3. The manufacturer, shall not be liable for any damage resulting from inappropriate modifications to the luminaire or faulty installation.

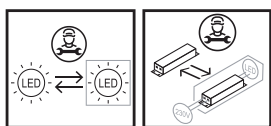
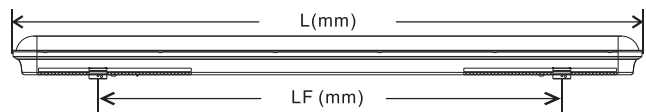


4. The light source contained in this luminaire shall only be replaced by the manufacturer or his service agent or a similar qualified person.

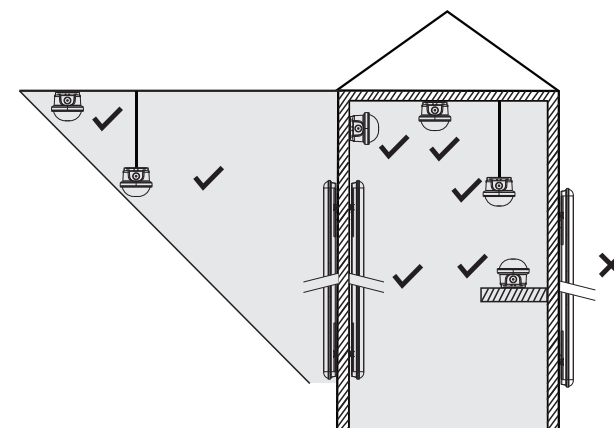
5. Caution, risk of electric shock.

The control gear provides basic insulation between the LV supply and the control circuit.

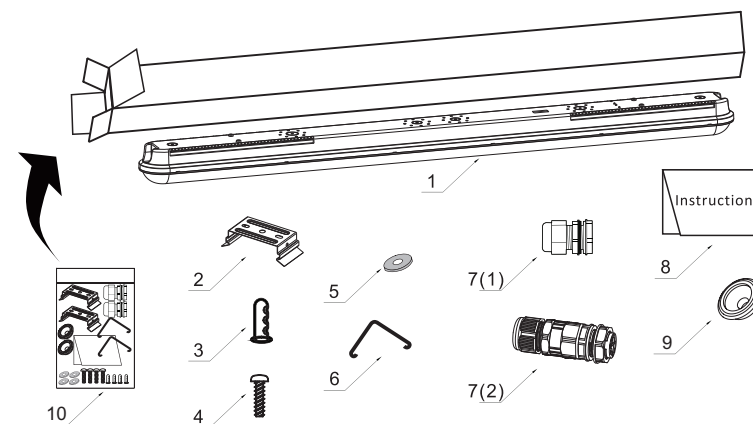
Product Description	Wattage	SAP Code	L	W	H	LF	Efficiency class
JULIE FLEX 600 2200 840	18W	96700023	635	94	78.5	170.5-500	D
JULIE FLEX 600 2200 840 DALI	18W	96700024	635	94	78.5	170.5-500	D
JULIE FLEX 1200 4200 840	34W	96700011	1235	94	78.5	570.5-1100	D
JULIE FLEX 1200 4200 840 QC	34W	96700012	1235	94	78.5	570.5-1100	D
JULIE FLEX 1200 4200 840 COR MWS	34W	96700013	1235	94	78.5	570.5-1100	D
JULIE FLEX 1200 4200 840 DALI	34W	96700014	1235	94	78.5	570.5-1100	D
JULIE FLEX 1500 6300 840	51W	96700015	1535	94	78.5	670.5-1400	D
JULIE FLEX 1500 6300 840 QC	51W	96700016	1535	94	78.5	170.5-500	D
JULIE FLEX 1500 6300 840 COR MWS	51W	96700017	1535	94	78.5	170.5-500	D
JULIE FLEX 1500 6300 840 DALI	51W	96700018	1535	94	78.5	170.5-500	D
JULIE FLEX 1500 8600 840	72W	96700019	1535	94	78.5	170.5-500	D
JULIE FLEX 1500 8600 840 QC	72W	96700020	1535	94	78.5	170.5-500	D
JULIE FLEX 1500 8600 840 COR MWS	72W	96700021	1535	94	78.5	170.5-500	D
JULIE FLEX 1500 8600 840 DALI	71W	96700022	1535	94	78.5	170.5-500	D

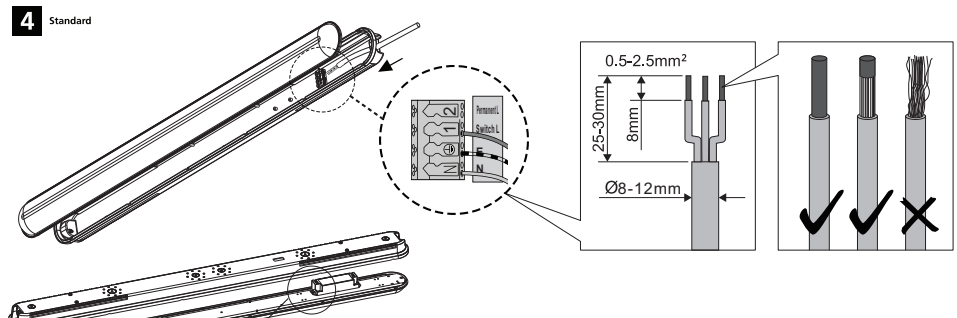
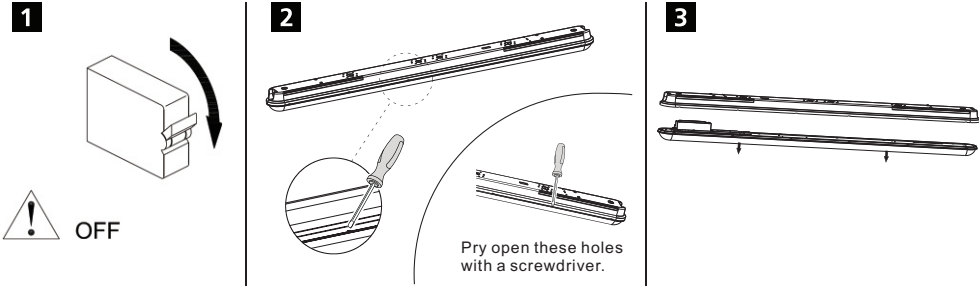


Information on replaceability

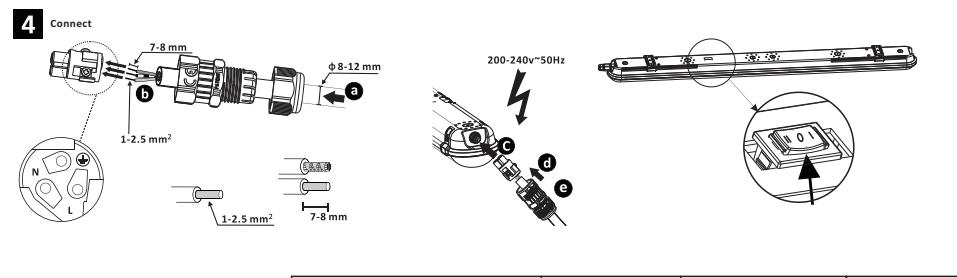
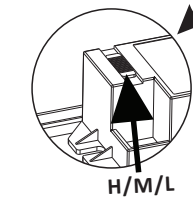


1	LED waterproof lighting	X1	7(1) <sup>standard</sup>	M20 five-set cable drill	X2
2	SS hook	X2	7(2) <sup>connect</sup>	Connect	X1
3	plastic expansion	X4	7(1) <sup>connect</sup>	M20 five-set cable drill	X1
4	Round head self-drilling screw 5x30	X4	8	Instructions	X1
5	Flat gasket 12x6/Center hole 6mm	X4	9	Grommet	X2
6	Triangle hook	X2	10	Accessory bag	X1

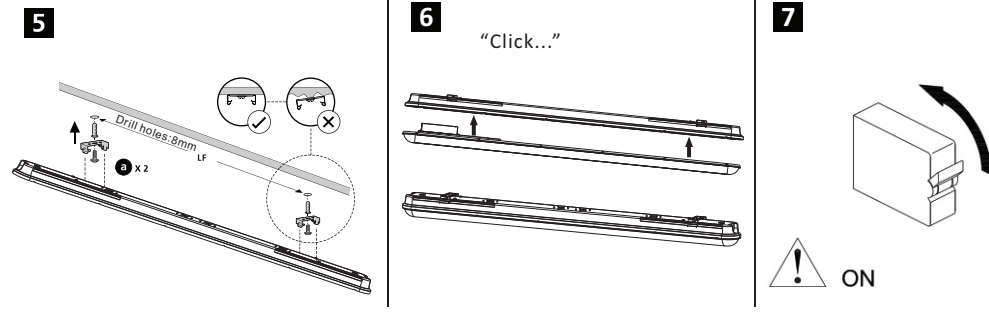
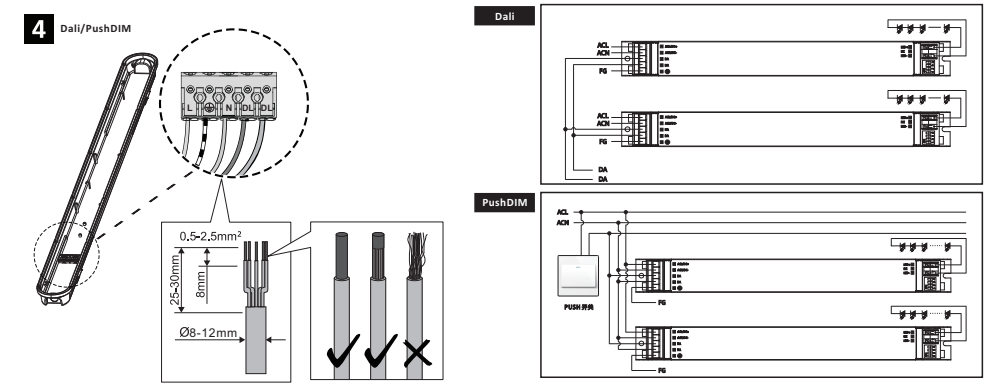
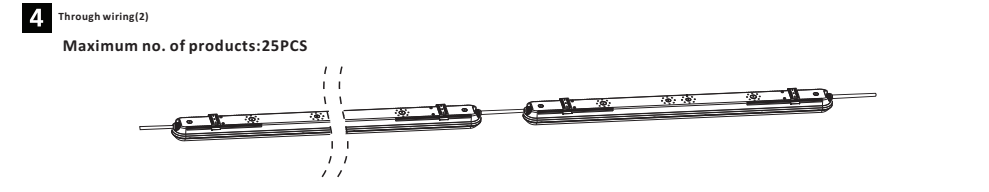
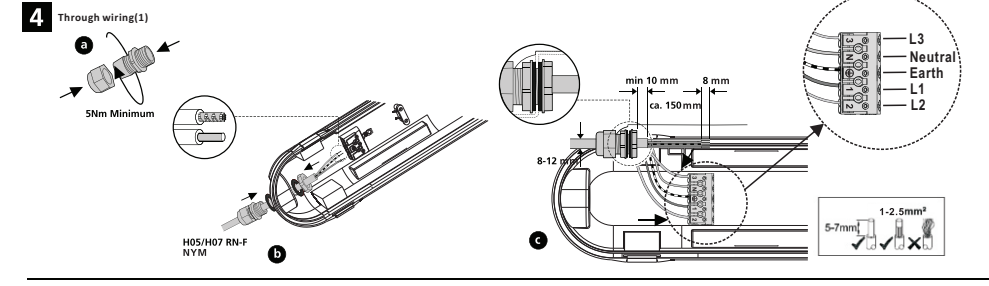




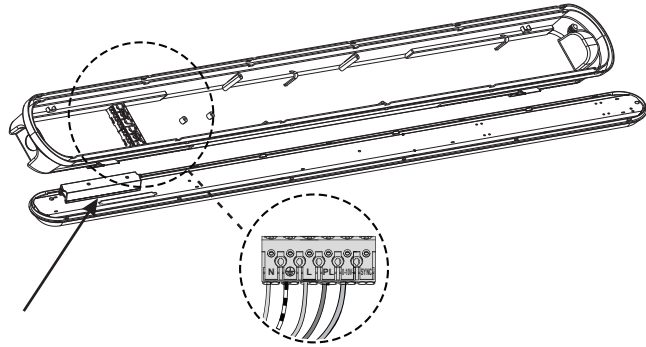
Product Description	Wattage(H/M/L)	Lumen(H/M/L)	Default
JULIE FLEX 600 2200 840	18W/12W/8W	2200/1600/1000lm	18W/2200lm
JULIE FLEX 1200 4200 840	34W/25W/18W	4200/3200/2200lm	34W/4200lm
JULIE FLEX 1500 6300 840	51W/41W/33W	6300/5200/4200lm	51W/6300lm
JULIE FLEX 1500 8600 840	72W/50W/33W	8600/6300/4200lm	72W/8600lm
JULIE FLEX 1200 4200 840 TW	34W/25W/18W	4200/3200/2200lm	34W/4200lm
JULIE FLEX 1500 6300 840 TW	51W/41W/33W	6300/5200/4200lm	51W/6300lm
JULIE FLEX 1500 8600 840 TW	72W/50W/33W	8600/6300/4200lm	72W/8600lm
JULIE FLEX 1200 4200 840 COR MWS	34W/25W/18W	4200/3200/2200lm	34W/4200lm
JULIE FLEX 1500 6300 840 COR MWS	51W/41W/33W	6300/5200/4200lm	51W/6300lm
JULIE FLEX 1500 8600 840 COR MWS	72W/50W/33W	8600/6300/4200lm	72W/8600lm



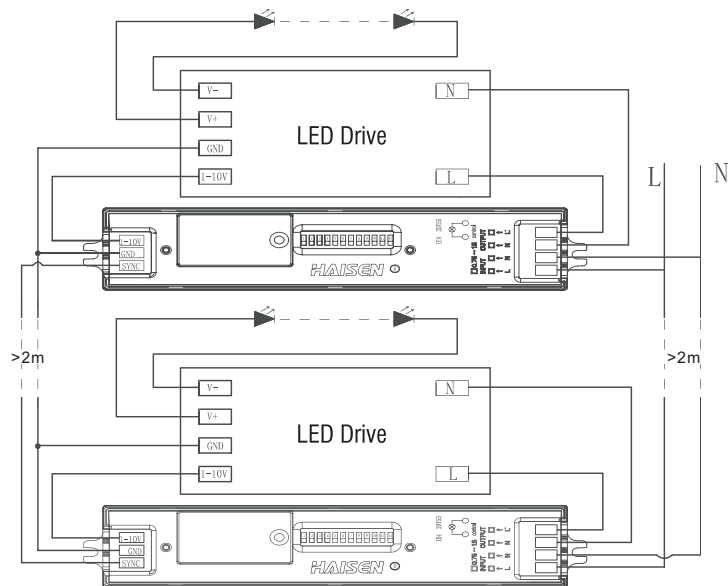
Product Description	Wattage(H/L/M)	Lumen(H/L/M)	Default
JULIE FLEX 1200 4200 840 QC	34W/18W/25W	4200/2200/3200lm	34W/4200lm
JULIE FLEX 1500 6300 840 QC	51W/33W/41W	6300/4200/5200lm	51W/6300lm
JULIE FLEX 1500 8600 840 QC	72W/33W/50W	8600/4200/6300lm	72W/8600lm



MWS

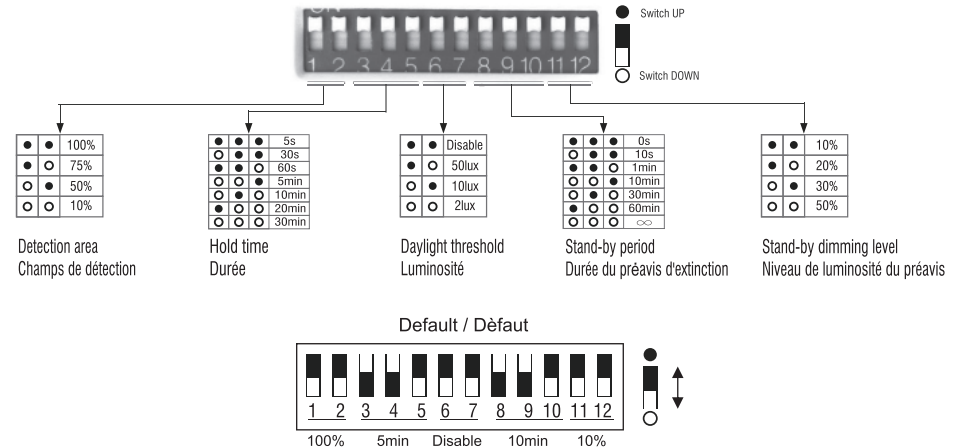


Wiring diagram (SNYC)

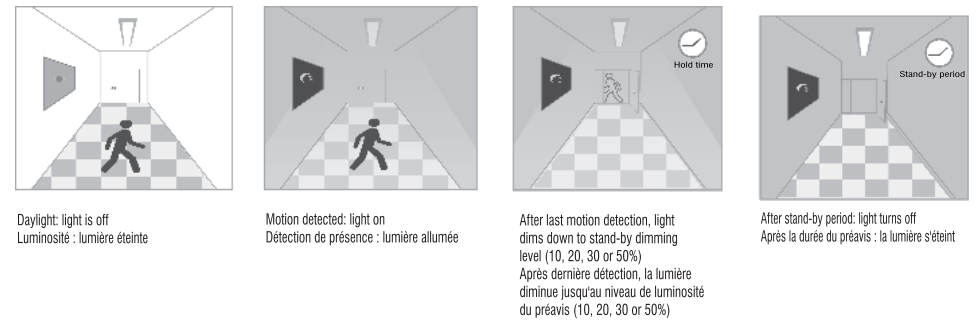


NOTE: The synchronization terminal is a common transceiver port. After the synchronization ports of multiple sensors are connected in parallel to form a wired network, when any sensor in the network is triggered, the synchronization port outputs a high level signal for the network members to light up at the same time when they receive a high level synchronization signal.

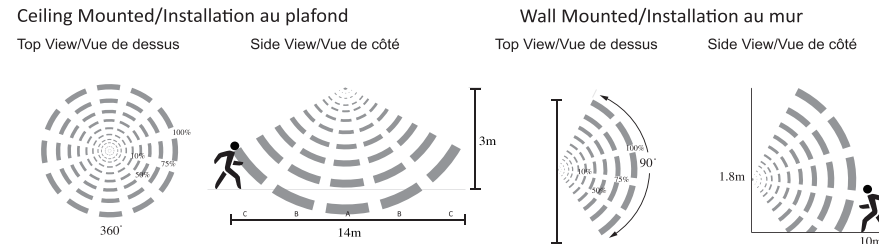
Settings



Application



Detection coverage/Champs de détection



NOTE: Above detection coverage is recommended, actual coverage may vary depending on luminaire configuration and environmental conditions.  
 NB : Ci-dessus champs de détection envisagé, le champs réel dépendra de la configuration du luminaire et de son environnement