

## YELLOCK MONOBLOCK 60 FEMALE

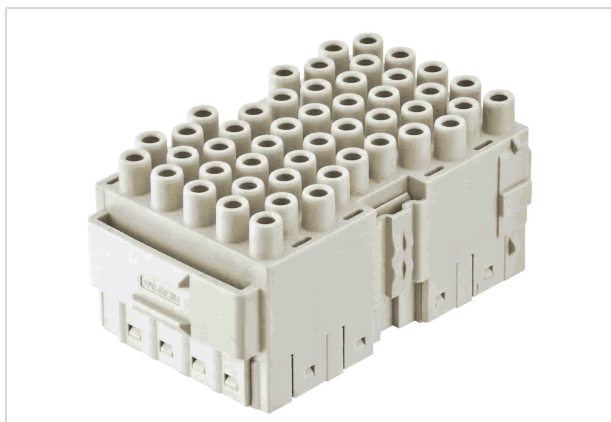


Image is for illustration purposes only. Please refer to product description.

Part number	11 05 648 3101
Specification	YELLOCK MONOBLOCK 60 FEMALE
HARTING eCatalogue	<a href="https://b2b.harting.com/11056483101">https://b2b.harting.com/11056483101</a>

### Identification

Category	Inserts
Series	Han-Yellock®
Element	Monoblock

### Version

Termination method	Crimp termination
Gender	Female
Size	Han-Yellock® 60
Number of contacts	48
Details	Please order crimp contacts separately.

### Technical characteristics

Conductor cross-section	0.14 ... 4 mm <sup>2</sup>
Rated current	16 A
Rated voltage	500 V
Rated impulse voltage	6 kV
Pollution degree	3
Insulation resistance	>10 <sup>10</sup> Ω
Limiting temperature	-40 ... +125 °C
Mating cycles	≥500

### Material properties

Material (insert)	Polycarbonate (PC)
-------------------	--------------------



Pushing Performance  
Since 1945

## Material properties

Colour (insert)	RAL 7032 (pebble grey)
Material flammability class acc. to UL 94	V-0
RoHS	compliant
ELV status	compliant
China RoHS	e
REACH Annex XVII substances	Not contained
REACH ANNEX XIV substances	Not contained
REACH SVHC substances	Not contained
Fire protection on railway vehicles	EN 45545-2 (2020-08)
Requirement set with Hazard Levels	R22 (HL 1-3) R23 (HL 1-3)

## Specifications and approvals

Specifications	IEC 60664-1 IEC 61984
Approvals	DNV GL
UL / CSA	UL 1977 ECBT2.E235076

## Commercial data

Packaging size	1
Net weight	35 g
Country of origin	Germany
European customs tariff number	85389099
GTIN	5713140109810
eCl@ss	27440205 Contact insert for industrial connectors