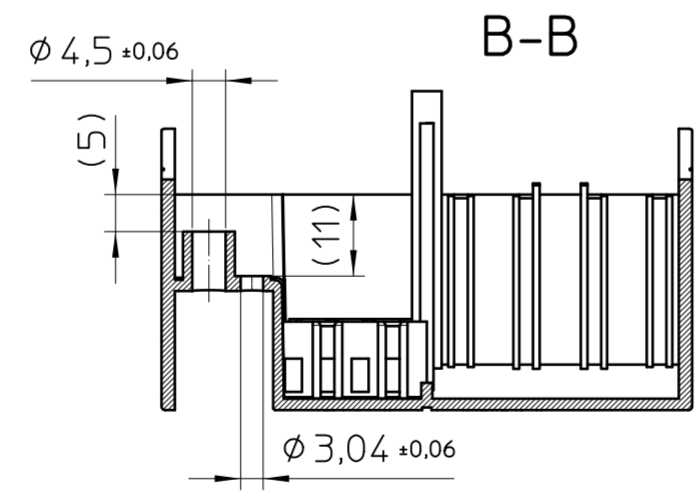
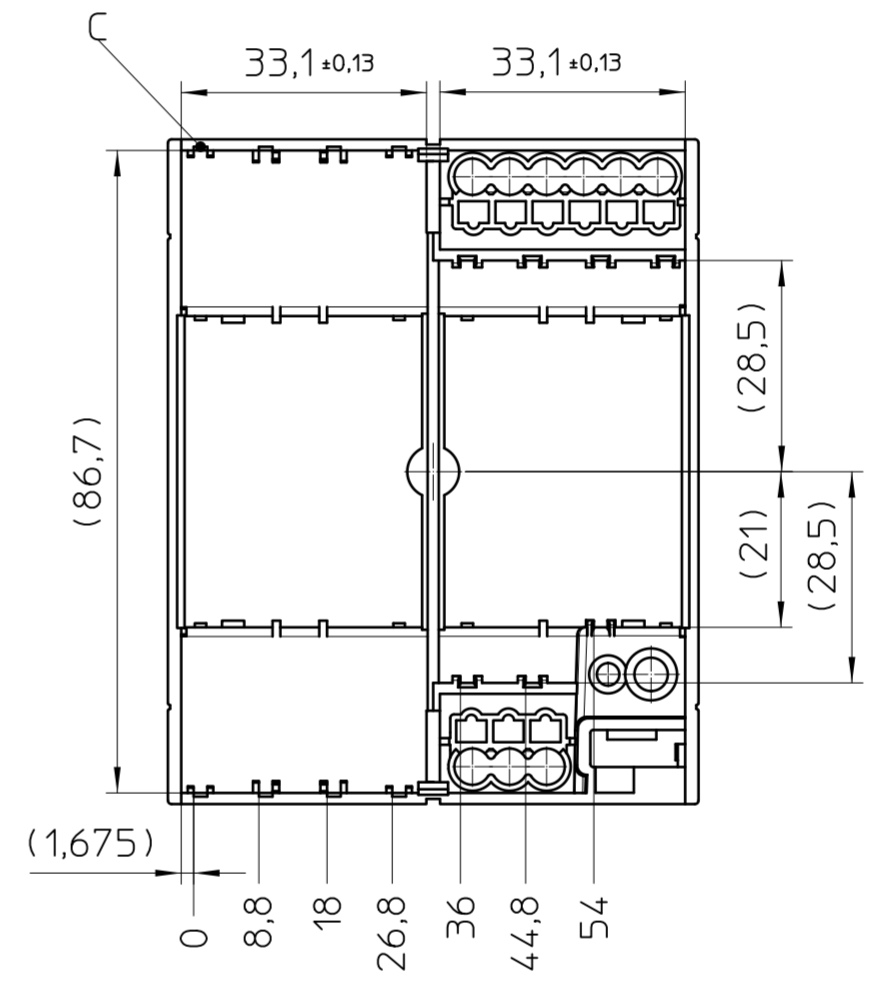
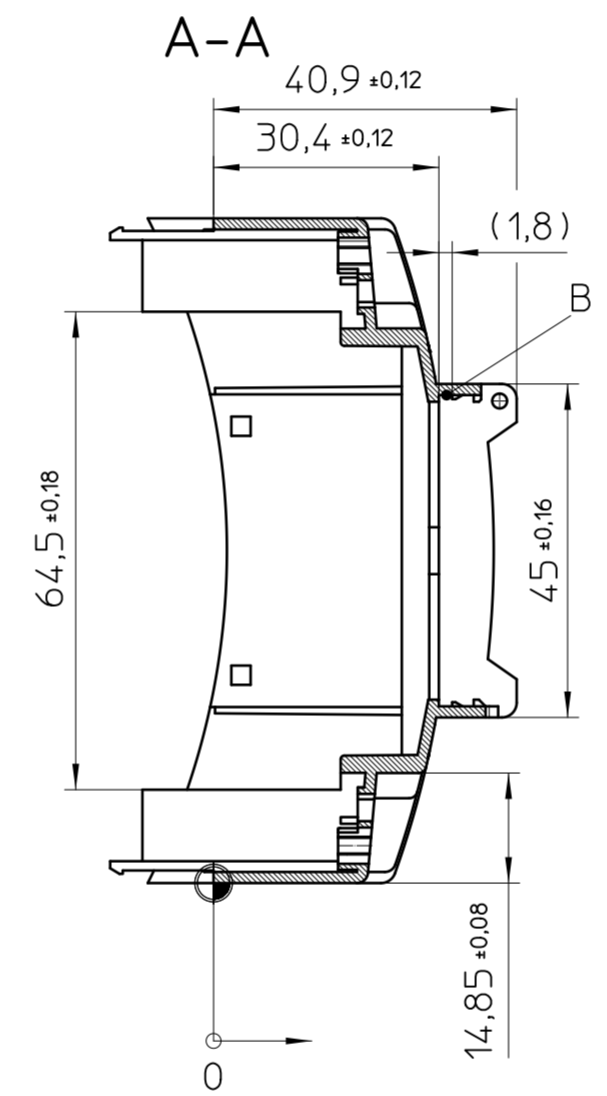
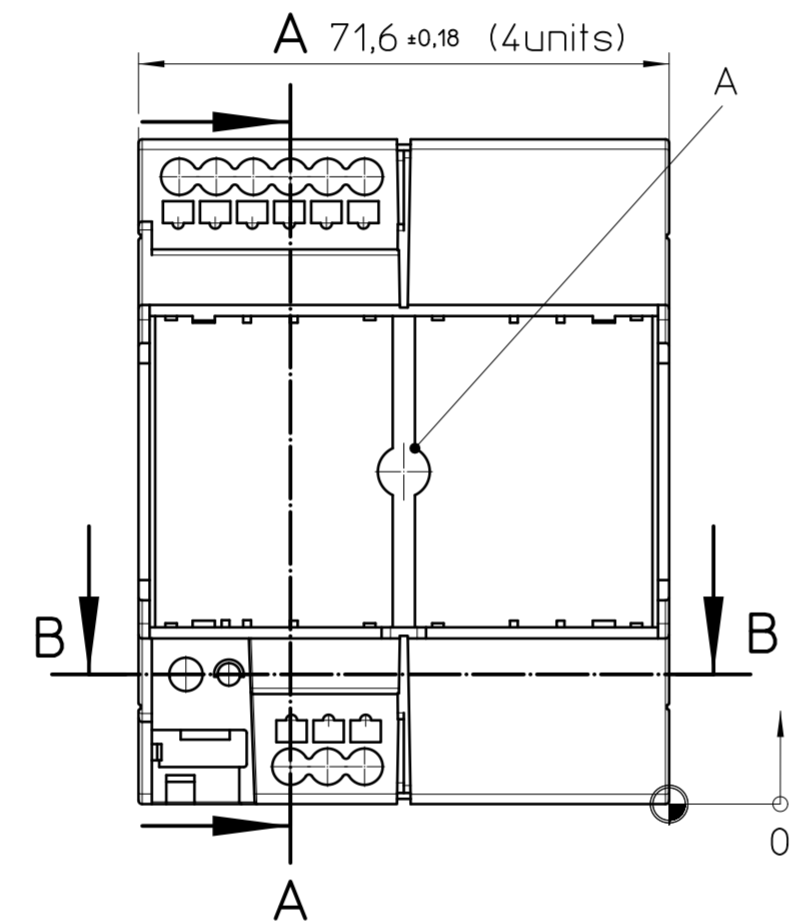
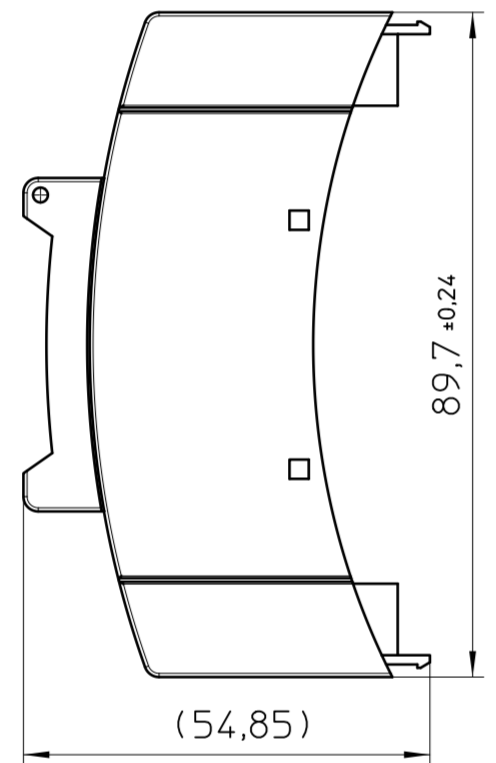
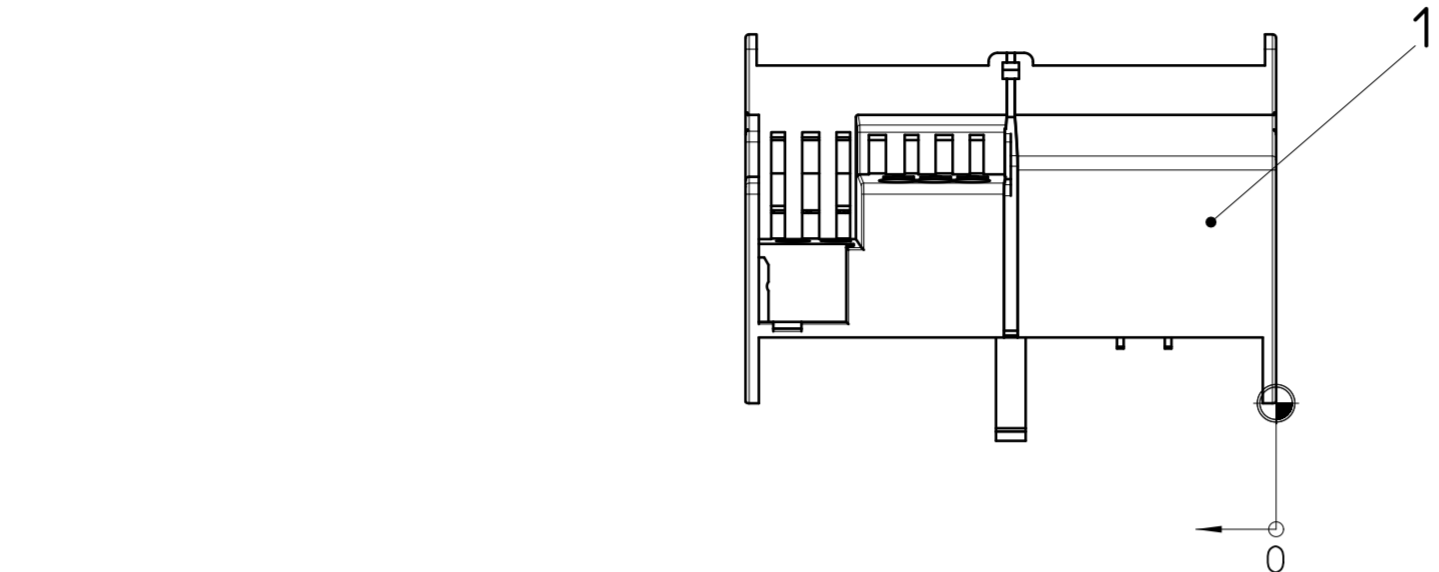
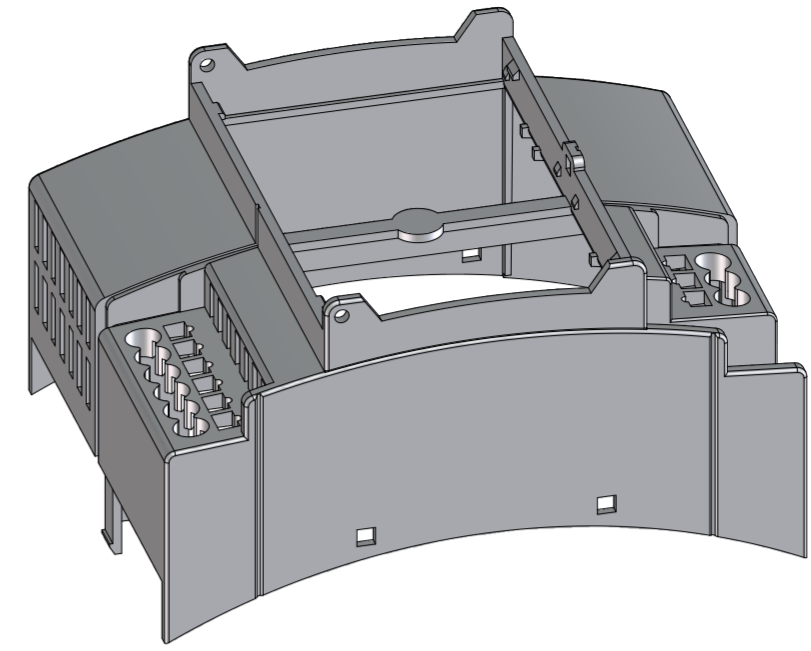


Transfer or duplication of this document as well as the utilisation or communication of its content are not permitted unless express consent is granted. Violations give rise to claims for damages. All rights reserved in case of patent, utility model or design patent registrations. Tolerance specifications do not include clearances inherent in the design.

Weitergabe sowie Vervielfältigung dieses Dokuments, Verwertung und Mitteilung seines Inhalts sind verboten, soweit nicht ausdrücklich gestattet. Zuwiderhandlungen verpflichten zu Schadensersatz. Alle Rechte für den Fall der Patent-, Gebrauchsmuster- oder Designeintragung vorbehalten. Bauartbedingtes Spiel ist in den Toleranzangaben nicht berücksichtigt.

# HOUSING UPPER PART



### General Information:

- Tolerances apply in a normal climate according to DIN EN ISO 291-23/50-2
- Workpiece zero point for mechanical processing
- Tolerances for mechanical processing are ISO 2768-mK
- Tolerances for printing DIN ISO 2768-m
- Machining radii min. R1, further on request
- Web: [www.phoenixcontact.com](http://www.phoenixcontact.com) webcode: #0311

### Additional information:

- A. If PCB 7+8 used, the fin has to be removed
- B. Position PCB 9 or position plate
- C. PCB guidance for vertical PCB 11

Pos.	QTY	Description	Material
1	1	HOUSING UPPER PART	PC

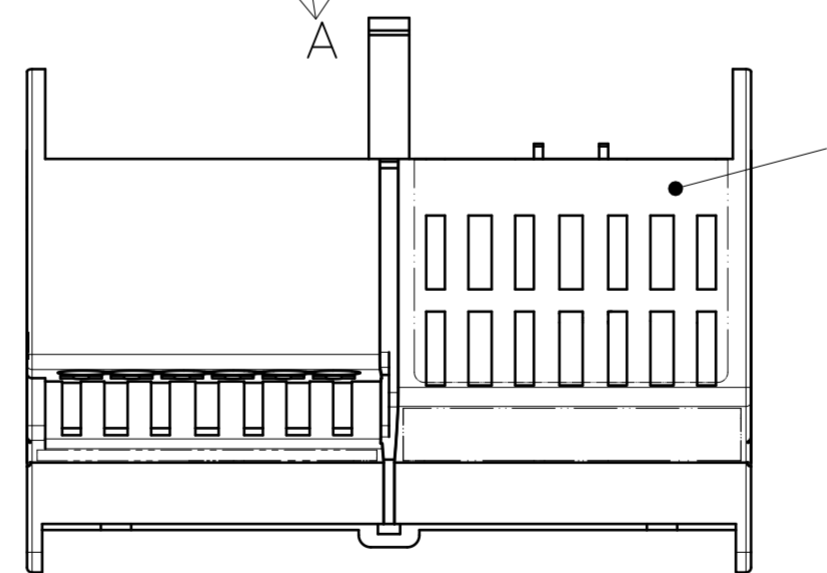
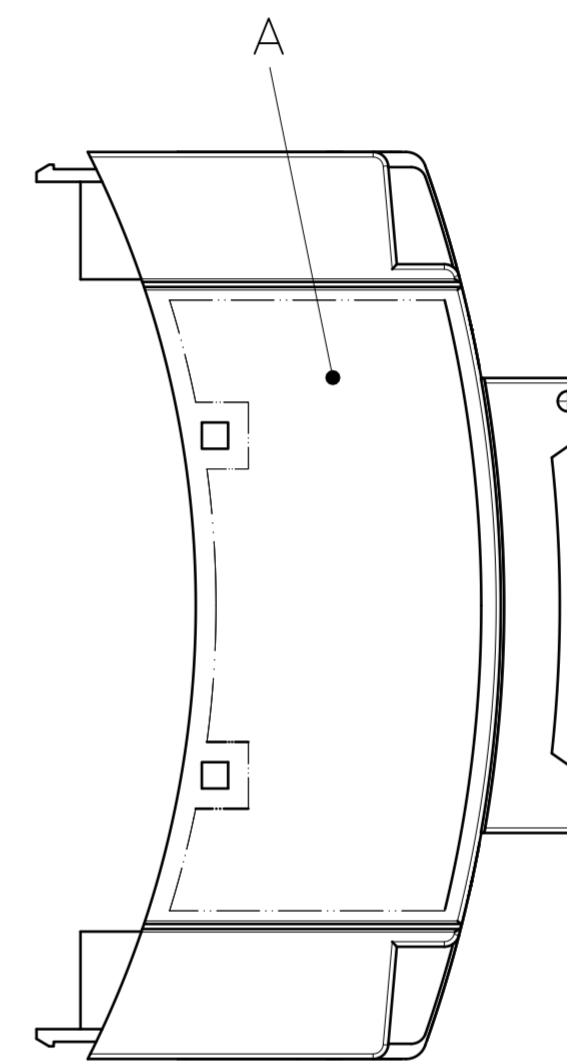
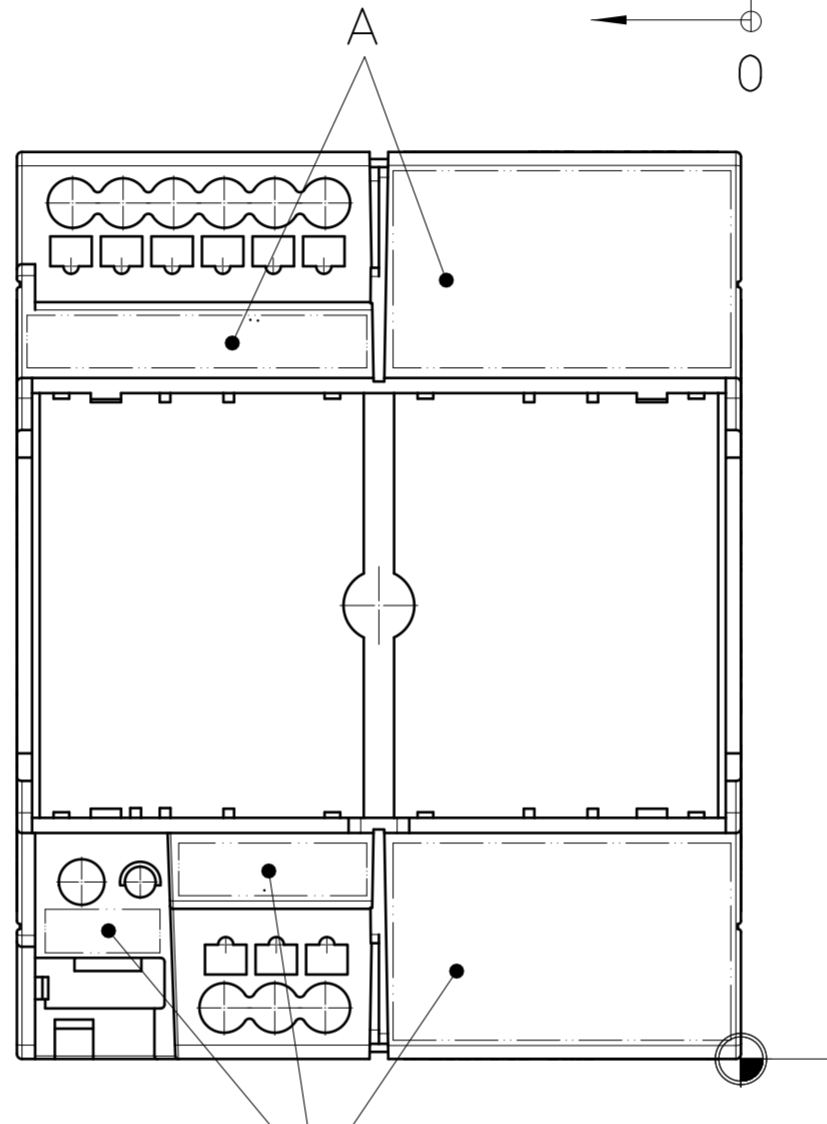
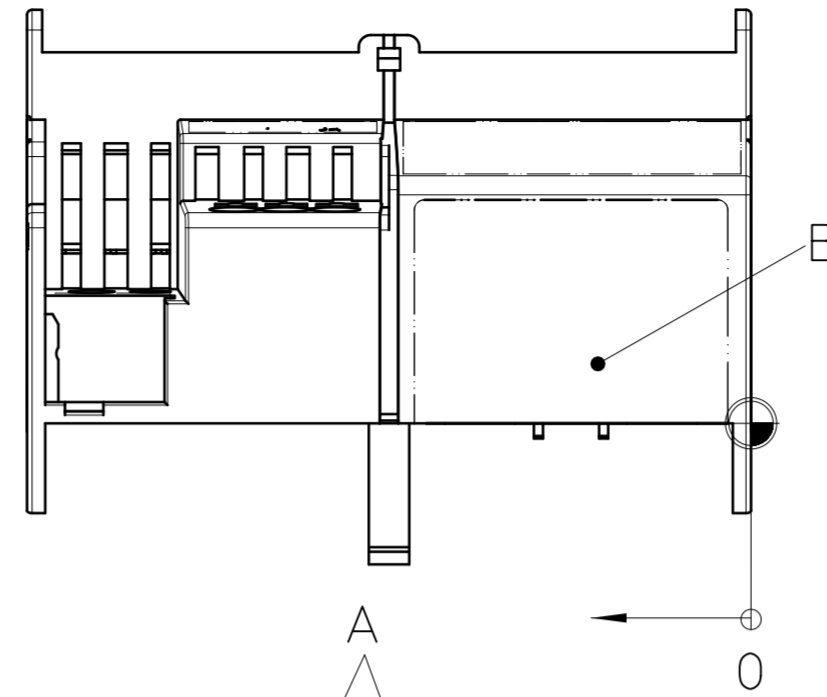
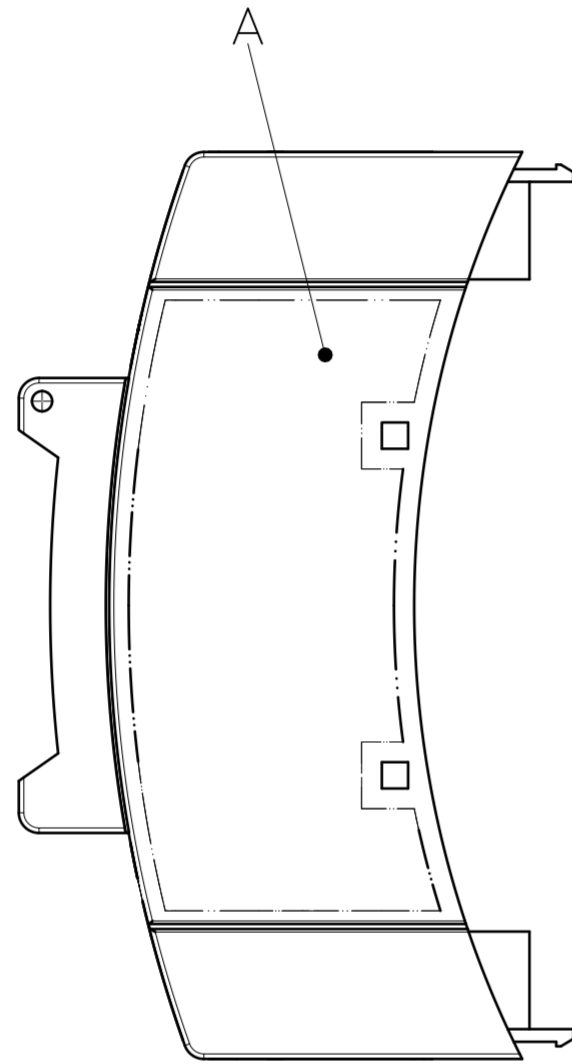
  

	document-no. / ri	article-no.	scale	- Simplified representation - Document excluded from change process - Linear dimensions (mm)
	01428407 / 03	1340864	1:1	
	date	document-type	description BC 71,6 OT 2P2K00C KMGY	
	27.10.2025	TECDOC 2D_Productdrawing		
page 1	of 3			


Transfer or duplication of this document as well as the utilisation or communication of its content are not permitted unless express consent is granted. Violations give rise to claims for damages. All rights reserved in case of patent, utility model or design patent registrations. Tolerance specifications do not include clearances inherent in the design.

Weitergabe sowie Vervielfältigung dieses Dokuments, Verwertung und Mitteilung seines Inhalts sind verboten, soweit nicht ausdrücklich gestattet. Zuwiderhandlungen verpflichten zu Schadensersatz. Alle Rechte für den Fall der Patent-, Gebrauchsmuster- oder Designeintragung vorbehalten. Bauartbedingtes Spiel ist in den Toleranzangaben nicht berücksichtigt.

# Marking and machining area





### General Information:

-  Workpiece zero point for mechanical processing
- Tolerances for mechanical processing are ISO 2768-mk
- Tolerances for printing DIN ISO 2768-m
- Machining radii min. R1, further on request
- Web: [www.phoenixcontact.com](http://www.phoenixcontact.com) webcode: #0311

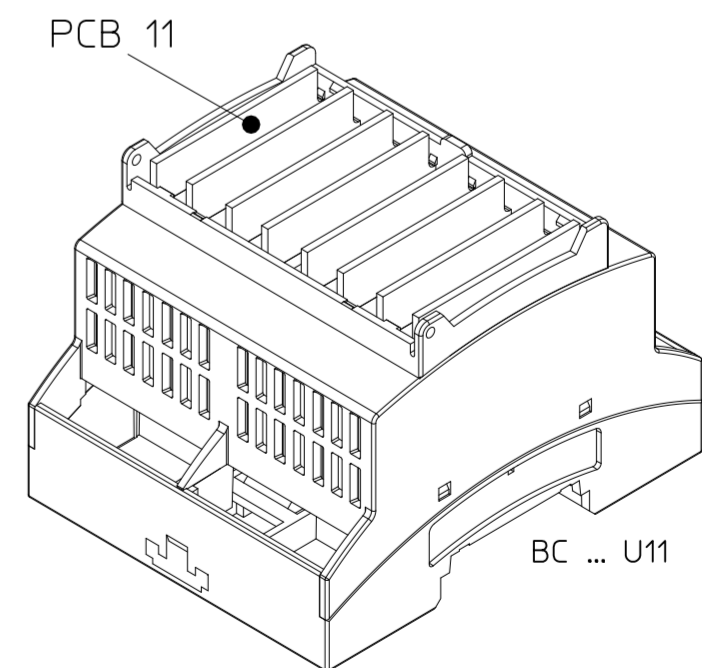
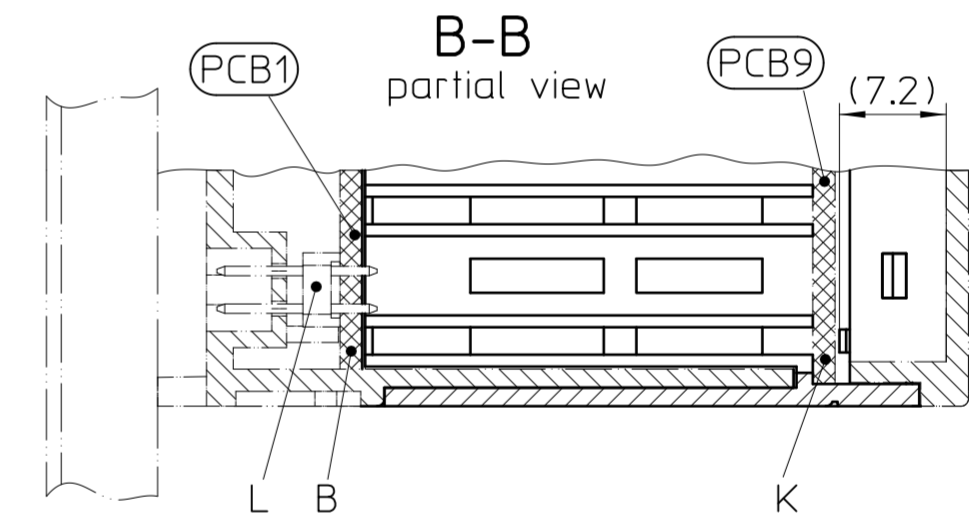
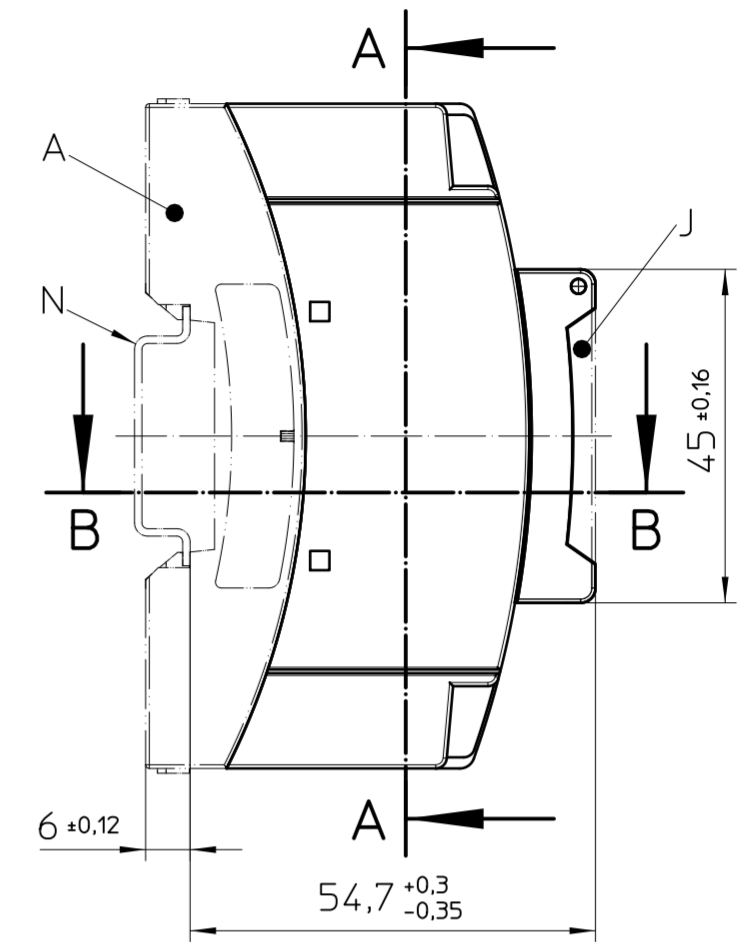
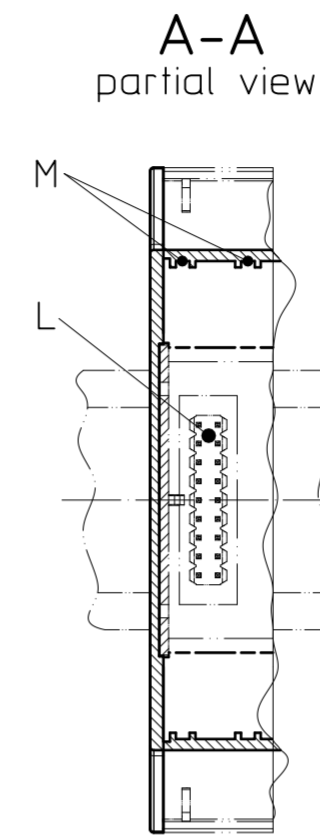
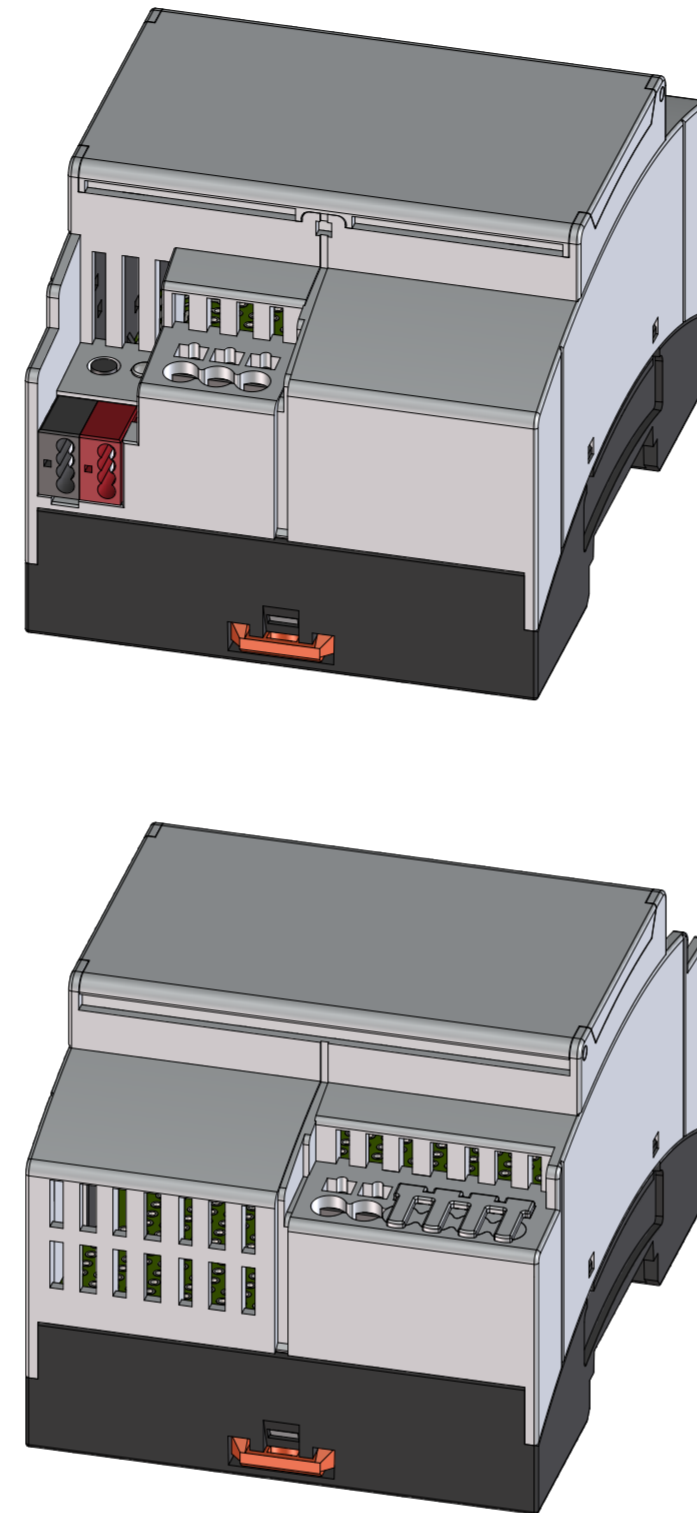
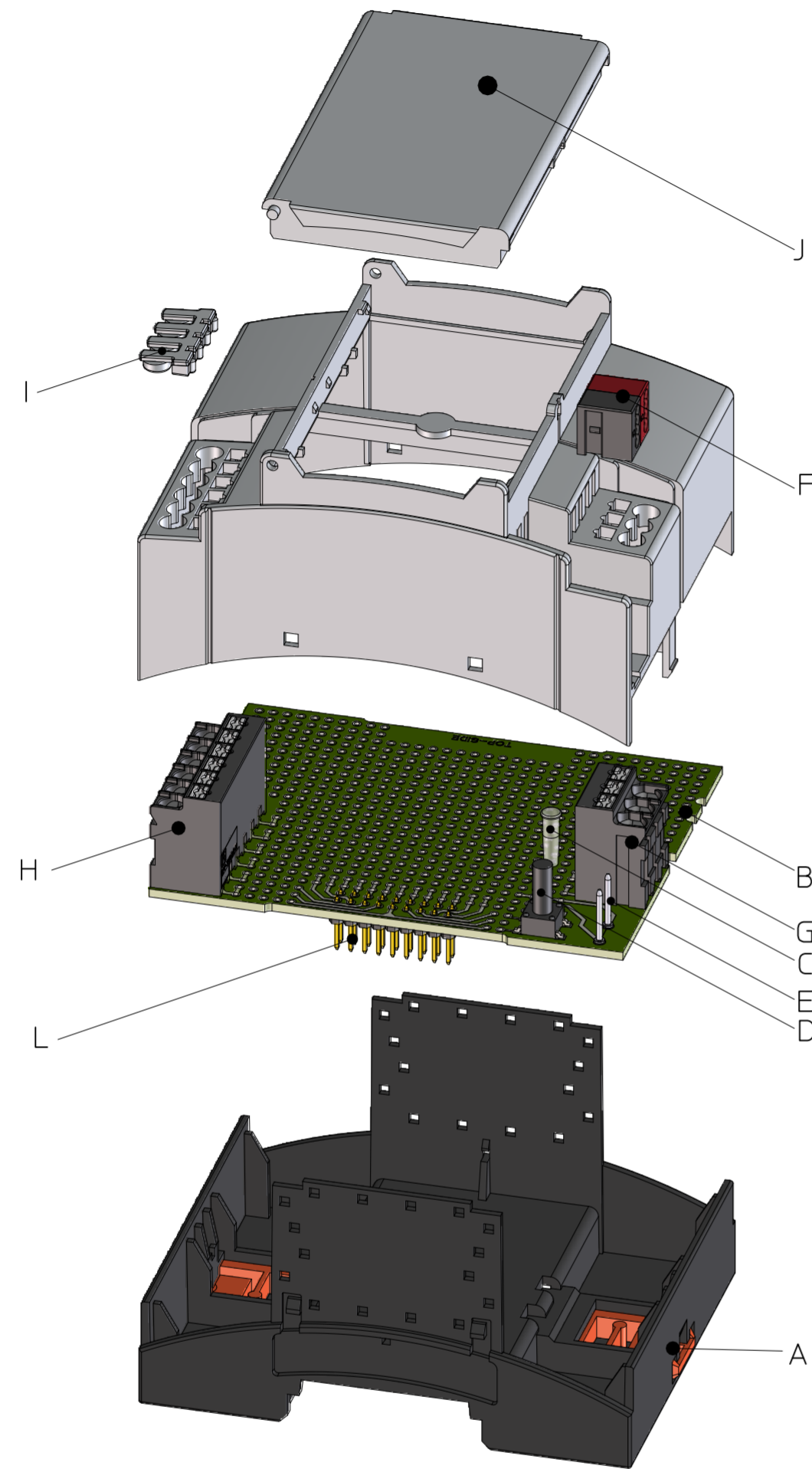
### Additional information:

- A. Max. marking area left and right for pad printing and laser printing
- B. Machining area

 DIN A3 	document-no. / ri	article-no.	scale	- Simplified representation - Document excluded from change process - Linear dimensions [mm]
	01428407 / 03	1340864	1:1	
date	document-type	description		
27.10.2025	TECDOC 2D_Productdrawing	BC 71,6 OT 2P2K00C KMGY		
page 2	of 3			

# Assembly example

Overall dimensions compliant DIN 43880



- Additional information:
- A. Housing lower part
  - B. PCB 1 (main PCB)
  - C. Light conductor
  - D. Button
  - E. Pins for KNX terminal
  - F. KNX terminal
  - G. PCB terminal block SPT-THR 3-pin
  - H. PCB terminal block SPT-THR 6-pin
  - I. Filler plug
  - J. Cover
  - K. Position PCB 9 or position plate
  - L. Header for HBUS (PSTD 0,65X0,65/9-2,54)
  - M. PCB guidance for vertical PCB 11
  - N. Mounting rail like EN 60715: TH 35-7,5 or mounting rail TH 35-15x1,5 similar to EN 60715

Transfer or duplication of this document as well as the utilisation or communication of its content are not permitted unless express consent is granted. Violations give rise to claims for damages. All rights reserved in case of patent, utility model or design patent registrations. Tolerance specifications do not include clearances inherent in the design.

Weitergabe sowie Vervielfältigung dieses Dokuments, Verwertung und Mitteilung seines Inhalts sind verboten, soweit nicht ausdrücklich gestattet. Zuwiderhandlungen verpflichten zu Schadensersatz. Alle Rechte für den Fall der Patent-, Gebrauchsmuster- oder Designeintragung vorbehalten. Bauabfertigung ist in den Toleranzangaben nicht berücksichtigt.

- EN ISO 291 23/50

	document-no. / ri	article-no.	scale	- Simplified representation - Document excluded from change process - Linear dimensions (mm)
	01428407 / 03	1340864	1:1	
	date	document-type	description BC 71,6 OT 2P2K00C KMGY	
	27.10.2025	TECDCOC_2D_Productdrawing		
page 3	of 3			