

Han 1A-3+PE-C-m latch

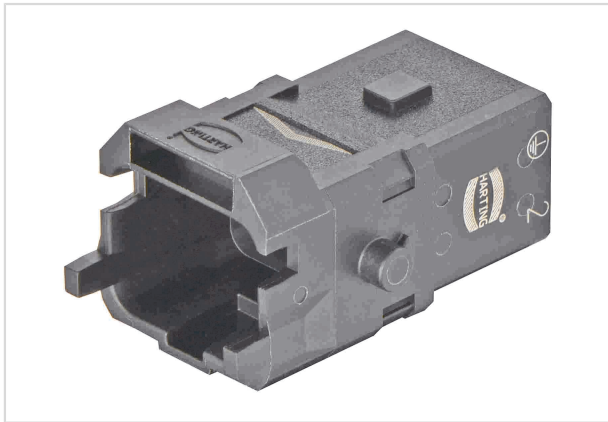


Image is for illustration purposes only. Please refer to product description.

Part number	09 10 003 3201
Specification	Han 1A-3+PE-C-m latch
HARTING eCatalogue	https://b2b.harting.com/09100033201

Identification

Category	Inserts
Series	Han [®] 1A

Version

Termination method	Crimp termination
Gender	Male
Size	1 A
Number of contacts	3
PE contact	Yes
Locking type	Snap-in latches
Details	Please order crimp contacts separately. Order separately the single wire seal or the hoods/housings for an IP65 performance.

A Han[®] 1A configuration that only consists of inserts (with or without strain relief, 09 10 000 5300) is an unenclosed connector according to IEC 61984. In this case protection against electric shock must be provided by the installation methods of the user.

Contact inserts must not be coupled or decoupled under electrical load.

Contact inserts must not be powered-up in the un-mated condition.

Technical characteristics

Conductor cross-section	0.14 ... 4 mm ²
Rated current	16 A
Rated voltage	400 V
Rated impulse voltage	6 kV
Pollution degree	3



Pushing Performance
Since 1945

Technical characteristics

Rated current acc. to UL	15 A @ AWG 12
Rated voltage acc. to UL	600 V
Insulation resistance	>10 ⁸ Ω
Limiting temperature	-30 ... +90 °C
Mating cycles	≥100
Degree of protection acc. to IEC 60529	IP20

Material properties

Material (insert)	Polyamide (PA)
Colour (insert)	RAL 9005 (jet black)
Material flammability class acc. to UL 94	V-0
RoHS	compliant
ELV status	compliant
China RoHS	e
REACH Annex XVII substances	Not contained
REACH ANNEX XIV substances	Not contained
REACH SVHC substances	Not contained
California Proposition 65 substances	Not contained
Fire protection on railway vehicles	EN 45545-2 (2020-08)
Requirement set with Hazard Levels	R22 (HL 1-3) R23 (HL 1-3)

Specifications and approvals

Specifications	EN 45545-2 Fire protection on railway vehicles IEC 61373 Category 1 Class B IEC 60664-1 IEC 61984
Approvals	DNV GL
UL / CSA	UL 1977 ECBT2.E235076 CSA-C22.2 No. 182.3 ECBT8.E235076 Please contact your local HARTING subsidiary for further information.

Commercial data

Packaging size	1
Net weight	9 g
Country of origin	Germany



Pushing Performance
Since 1945

Commercial data

European customs tariff number	85366990
GTIN	5713140185449
eCl@ss	27440205 Contact insert for industrial connectors
