

## Han 24HPR-PFT housing-M40 inverse

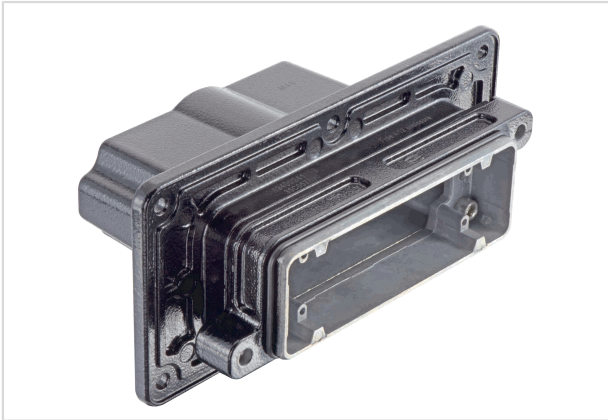


Image is for illustration purposes only. Please refer to product description.

Part number	19 40 024 1118
Specification	Han 24HPR-PFT housing-M40 inverse
HARTING eCatalogue	<a href="https://b2b.harting.com/19400241118">https://b2b.harting.com/19400241118</a>

### Identification

Category	Hoods/Housings
Series of hoods/housings	Han® HPR
Type of hood/housing	Panel feed through housing
Description of hood/housing	for mounting from outside

### Version

Size	24 B
Version	Top entry
Cable entry	1x M40
Locking type	Screw locking
Field of application	Hoods/housings for harsh outdoor environments
Details	The fixing screws must be sealed separately to reach the given degree of protection.

### Technical characteristics

Tightening torque (screw locking)	4 Nm
Tightening torque	6 Nm Fixing screws
Limiting temperature	-40 ... +125 °C
Degree of protection acc. to IEC 60529	IP65 IP68 IP69 / IPX9K acc. to ISO 20653
Type rating acc. to UL 50 / UL 50E	4 4X 12



**Pushing Performance**  
Since 1945

## Technical characteristics

Thickness of the panel  $\geq 2$  mm

## Material properties

Material (hood/housing)	Aluminium die-cast Corrosion resistant
Surface (hood/housing)	Powder-coated
Colour (hood/housing)	RAL 9005 (jet black)
Material (seal)	NBR
Material (locking)	Stainless steel
RoHS	compliant
ELV status	compliant
China RoHS	e
REACH Annex XVII substances	Not contained
REACH ANNEX XIV substances	Not contained
REACH SVHC substances	Not contained
California Proposition 65 substances	Yes
California Proposition 65 substances	Nickel Naphthalene
Fire protection on railway vehicles	EN 45545-2 (2020-08)
Requirement set with Hazard Levels	R1 (HL 1-3) R7 (HL 1-3)

## Specifications and approvals

Approvals	DNV GL
UL / CSA	UL 1977 ECBT2.E235076 CSA-C22.2 No. 182.3 ECBT8.E235076
CE	Yes

## Commercial data

Packaging size	1
Net weight	1,232.5 g
Country of origin	China
European customs tariff number	85389099
GTIN	5713140173477



**Pushing Performance**  
Since 1945

## Commercial data

eCl@ss

27440202 Shell for industrial connectors

---