

Designation	EOLIS 3D WIREFREE™ io
References	9016355 ; 9016354 ; 9016353
Range	Sensors

FUNCTIONS

The **EOLIS 3D WIREFREE™ io** is a wind sensor, detects the vibration of the awning caused by the wind. It's a wireless sensor (with batteries), the technology is based on a **three dimensional acceleration sensor**. This sensor is exclusively dedicated to arms awnings (folding arm, semi cassette and cassette awning) and must be paired to a unique motor io-homecontrol®.



- **WIND FUNCTIONNING**

The wind is declared present when counter of vibration pass over the threshold:

- 4 times the threshold is over passed means **wind** (the same counter for each threshold set)

At this moment, the awning goes up and the motor locks the remote control and sensor orders (no possibility to go down), then the vibrations disappear, the orders are available:

The time to wait before new orders:

	User mode	Demo mode
Remote control order	30s	5s
Automatism order	30min	30s

- **THRESHOLD LEVELS (G – FORCE)**

Levels	0	1	2	3	4	5	6	7	8	9
Corresponding acceleration	*	0,15	0,225	0,3	0,375	0,45	0,525	0,6	0,675	0,75

* = automatic setting

COMPATIBILITIES AT THE 05/08/10

Motors :

- Sunea io
- Sunilus io

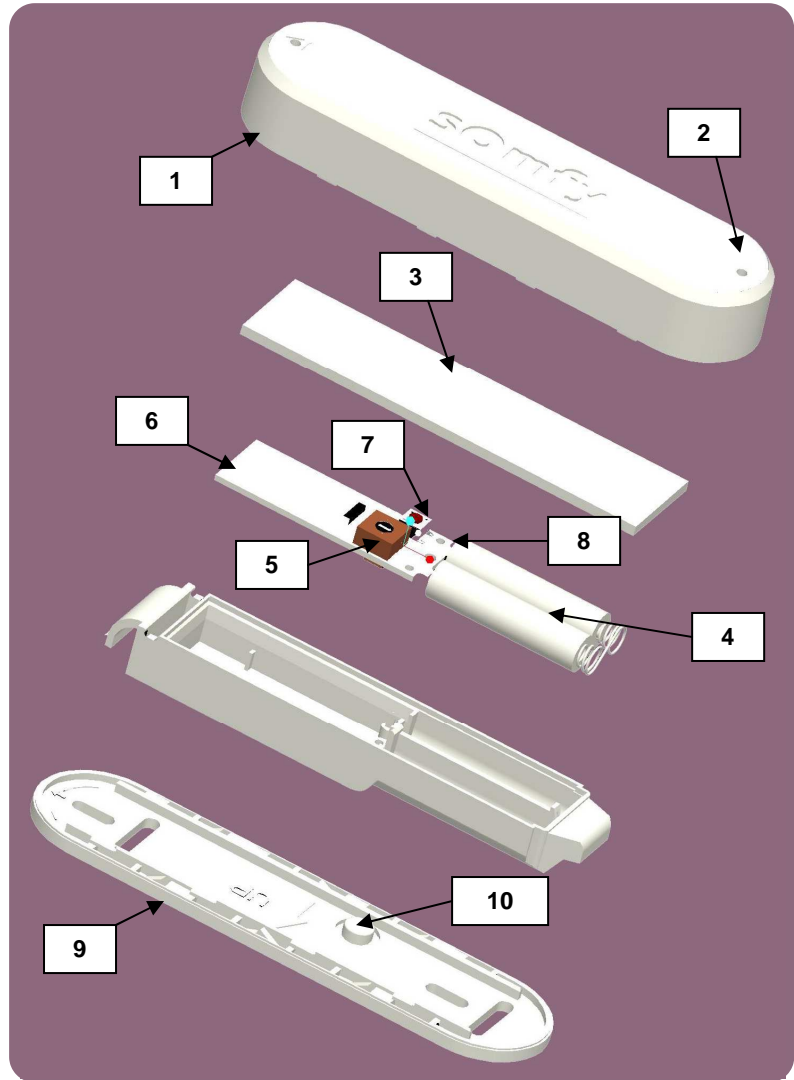
TECHNICAL SPECIFICATIONS

Box	Material	ABS (UV stabilised) / PP
	Colours	White / Black / Bronzal
	Size (mm)	25 X 38 X 153 (e x l x H)
	Index protection	IP 44
Batteries	Type	AAA Alkaline batteries
	Number	2
	Voltage	1.5V
	Lifetime (at ambient temperature)	about 4 years (1 actions per day)
Radio characteristics	Frequency	868.95 MHz
	Protocol	io-homecontrol®
	Radiated power	+6 dBm
	Modulation Type	FSK dev. +/-19.2KHz
Temperature range	Storing	-30°C / + 80°C
	Working	-20°C / + 60°C
Thresholds (potentiometer)	Automatic threshold	0
	Pre setting threshold	1 - 9
	Default threshold	2
Antenna	Integrated (built in)	
Weight	90g (including batteries)	
Standard (CE)	<i>In accordance with CE declaration in internet Website www.somfy.com/ce</i>	

DESCRIPTION / DIMENSIONS

DESCRIPTION

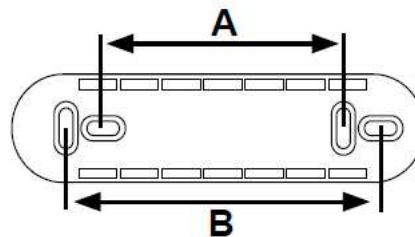
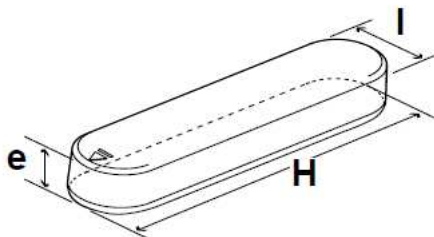
- 1) LID
- 2) Water evacuation holes
- 3) Waterproof joint
- 4) 2 batteries: AAA Alkaline
- 5) Potentiometer:
 - 0:Automatic setting
 - 1-9: predefined setting
- 6) Electronic circuit board (integrated radio antenna)
- 7) Programming Button
- 8) 2 LEDs
- 9) Fixing support
- 10) ON/OFF magnet



DIMENSIONS

H = 153mm
 l = 38mm
 e = 25mm

Space between the oblongs
 A = 93,3 mm
 B = 120,5 mm



R&D
 Name:
 Date:

T.JAIN

QUALITY
 Name:
 Date:

G. BRUNEAU

EDITOR
 Name:
 Date:

C. LOUET